

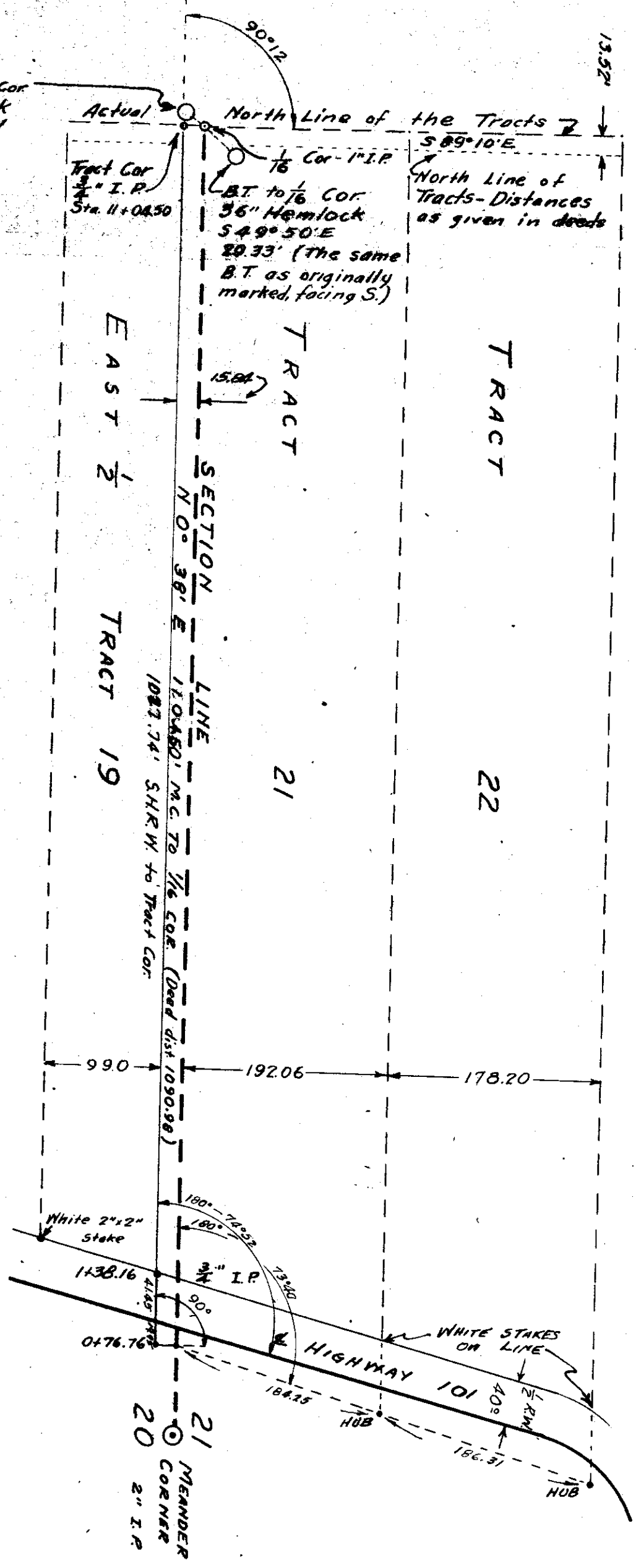
SURVEY FOR THOS. HILLOCK ~ SEC. 20 & 21, T1N, R10W.

SCALE 1" = 100'

I, W.A. Mathom, certify that this sketch is made from notes of an actual survey made by me; that the hubs and pipe corners are set as stated; and that I found and used the Meander Corner and section line re-established by the Tillamook County Surveyor December 1946

W.A. Mathom
Reg. Engr. # 1842

W.A. Mathom



B.T. to $\frac{1}{16}$ Cor
22" Hemlock
N 54° 56' W
13.74'

Tract Cor
 $\frac{3}{4}$ " I.P.
Sta. 11+04.50

B.T. to $\frac{1}{16}$ Cor
36" Hemlock
S 49° 50' E
20.33' (The same
B.T. as originally
marked, facing S.)

North Line of
Tracts - Distances
as given in deeds

EAST $\frac{1}{2}$

TRACT 19

21

22

White 2"x2" Stake

1138.16

41.85

0+76.76

21 MEANDER
CORNER
20 2" I.P.

180° - 74°52'

180°

$\frac{3}{4}$ " I.P.

90°

186.25

HUB

186.25

HUB

186.25

HUB

186.25

HUB

186.25

HUB

186.25

F-40-11

F-40-11