

4

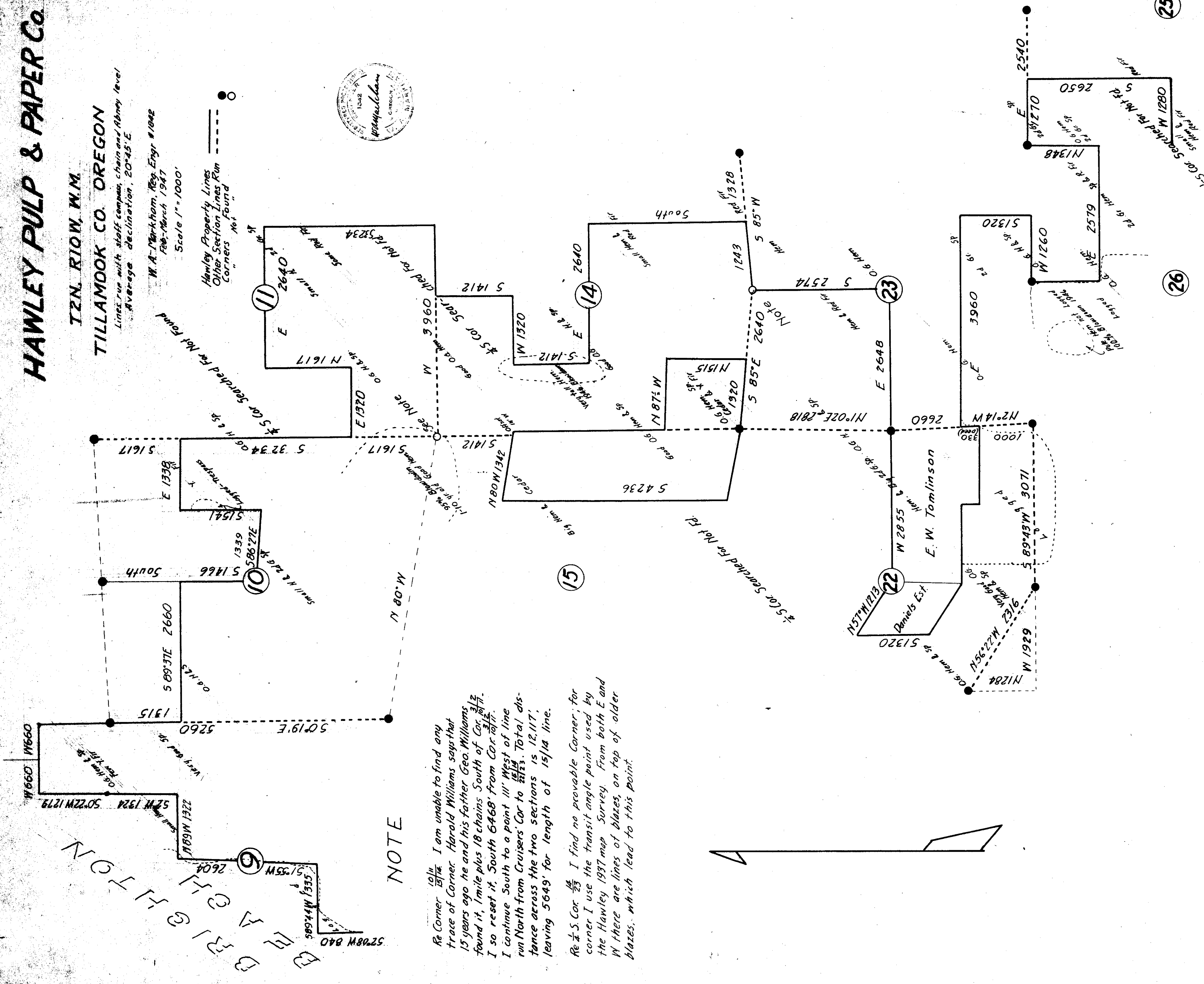
3

SURVEY OF SECTION LINES AND PROPERTY LINES

HAWLEY PULP & PAPER Co.

W 1/4 COR 34 1/2 CHAIN

TZN. RIOW, W.M. TILLAMOOK CO. OREGON. Lines run with staff compass, chain and Abney level. Average declination, 20°45'E. W.A. Markham, Reg. Engr #1042 Feb-March 1947. Scale 1"=1000'. Hawley Property Lines Other Section Lines Run Corners Not Found



NOTE

Re Corner 10 1/4 I am unable to find any trace of Corner. Harold Williams says that 15 years ago he and his father Geo. Williams found it, 1 mile plus 18 chains South of Cor. 3 1/2. I so reset it. South 6468' from Cor. 3 1/2. I continue South to a point 111' West of line run North from Cruisers' Cor to 15 1/4. Total distance across the two sections is 12,117' leaving 5649' for length of 15 1/4 line.

Re S. Cor 23 I find no provable Corner, for corner I use the transit angle point used by the Hawley 1937 map Survey. From both E and W there are lines of blazes, on top of older blazes, which lead to this point.

26

25

F-40-12