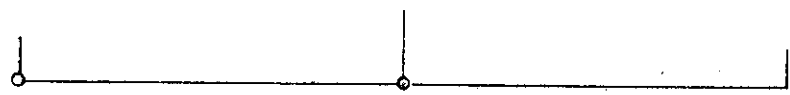
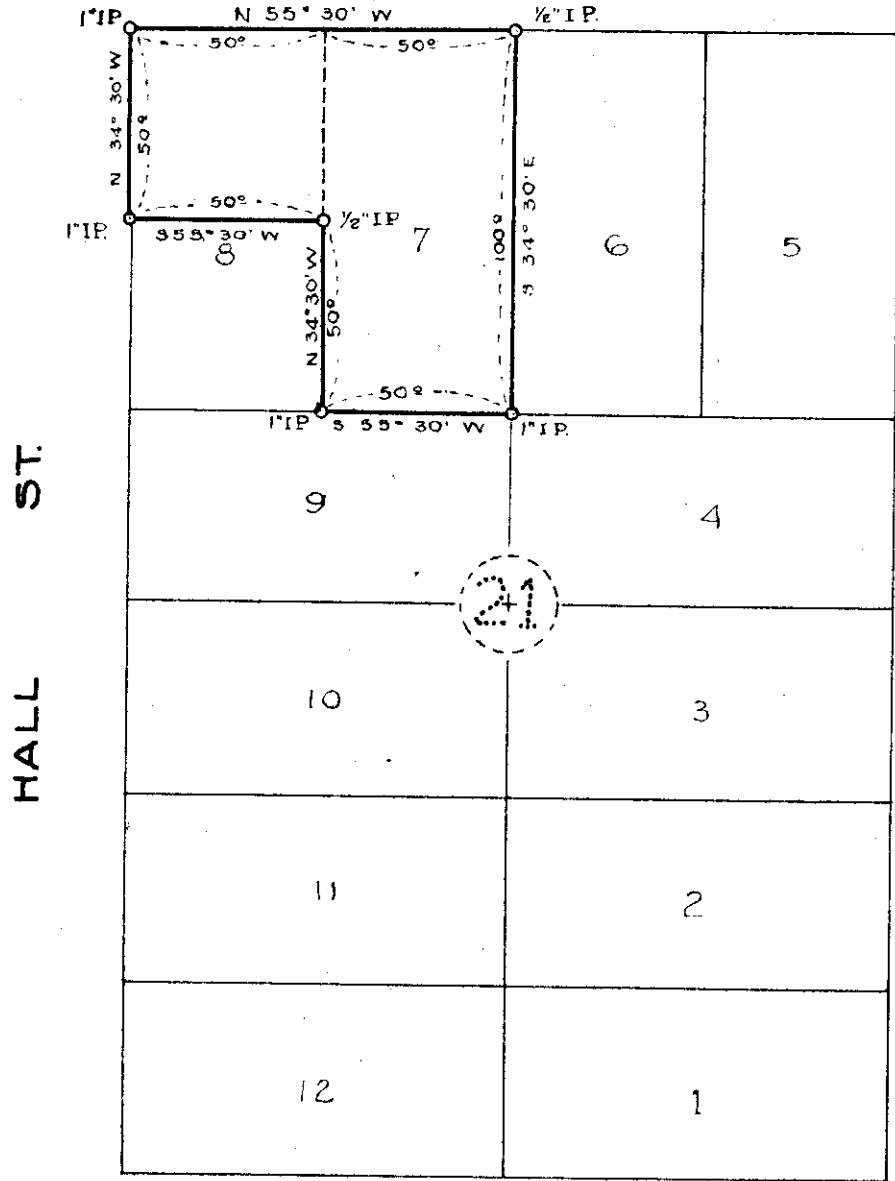


*C. R. ...
Tillman, OR*



FIRST ST.



HALL ST.

RORVIK ST.

SECOND ST.

● Monuments Found
○ Monuments Set

NW 1/4 SW 1/4

BOATWRIGHT ENGINEERING &
SURVEYING CO.
SALEM & CANNON BEACH, OREGON
SURVEY FOR
MRS. LIZZIE SOHLER
LOTS 7 & 8, BLOCK 21,
CITY OF WHEELER, OREGON
2-2.N.I.D.



F-40-16

DECEMBER, 1945
SCALE 1" = 50'

F-40-16

FIELD J. SHEPPARD
DRAWN H. M. MUNGER