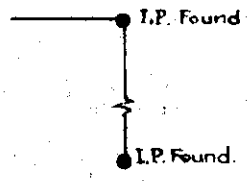
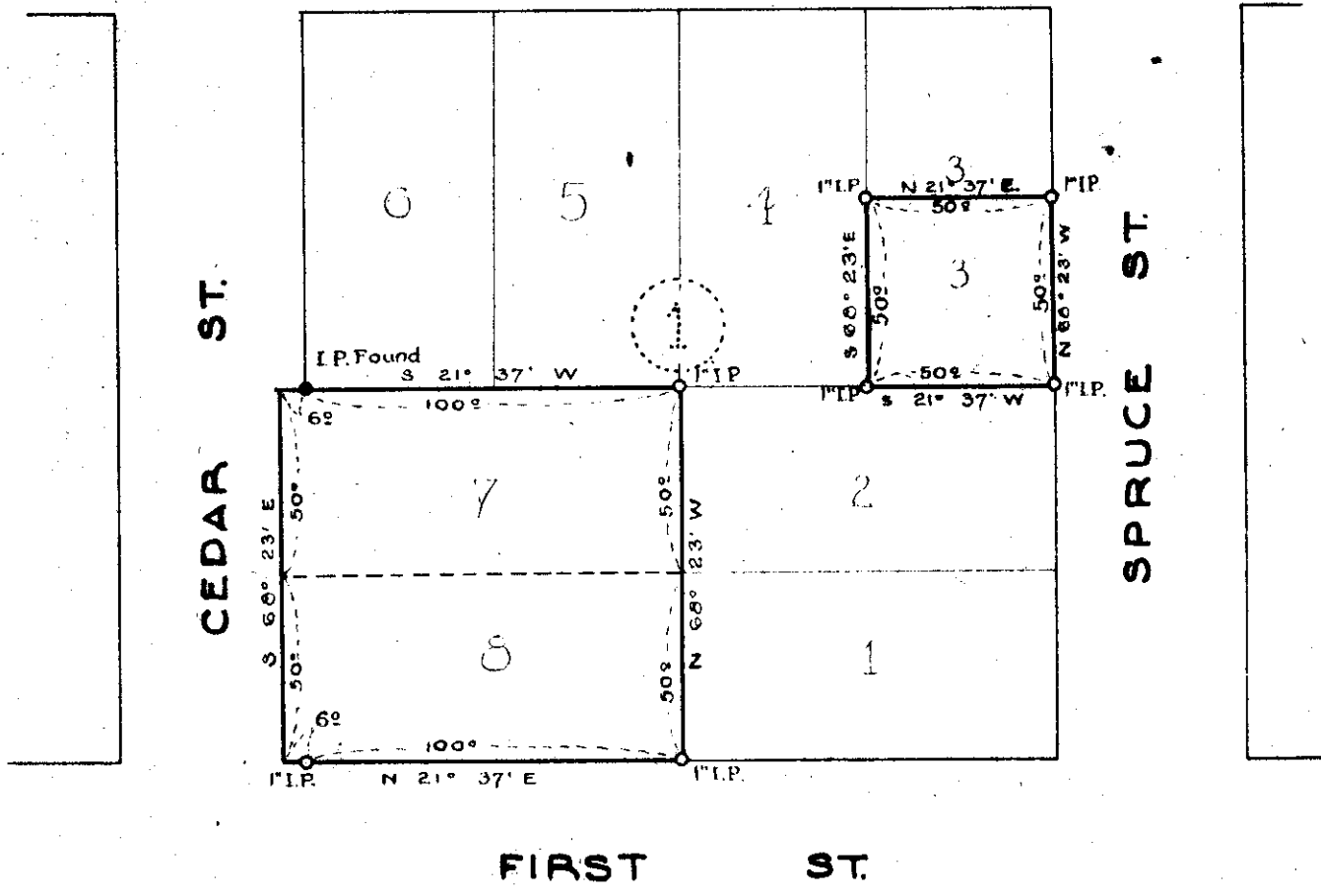


*As Recorded
Wheeler, Ore.*

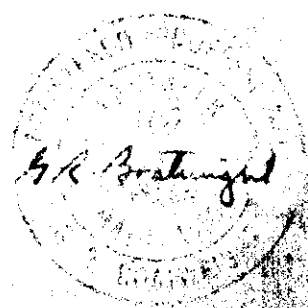
**OREGON COAST HWY.
(NEHALEM BLVD.)**



- Monuments Found
- Monuments Set



**BOATWRIGHT ENGINEERING &
SURVEYING CO.**
SALEM & CANNON BEACH, OREGON
**SURVEY FOR
E. G. DOWNEY
LOTS 3, 7 & 8,
BLOCK 1
CITY OF WHEELER, ORE.**
2-2, N.I.D.



DECEMBER, 1945
SCALE 1" = 50'

FIELD: J. SHEPPARD
DRAWN: H. M. MURGER

F-40-19

F-40-19

Survey NW 1/4

APPROVED: [Signature]