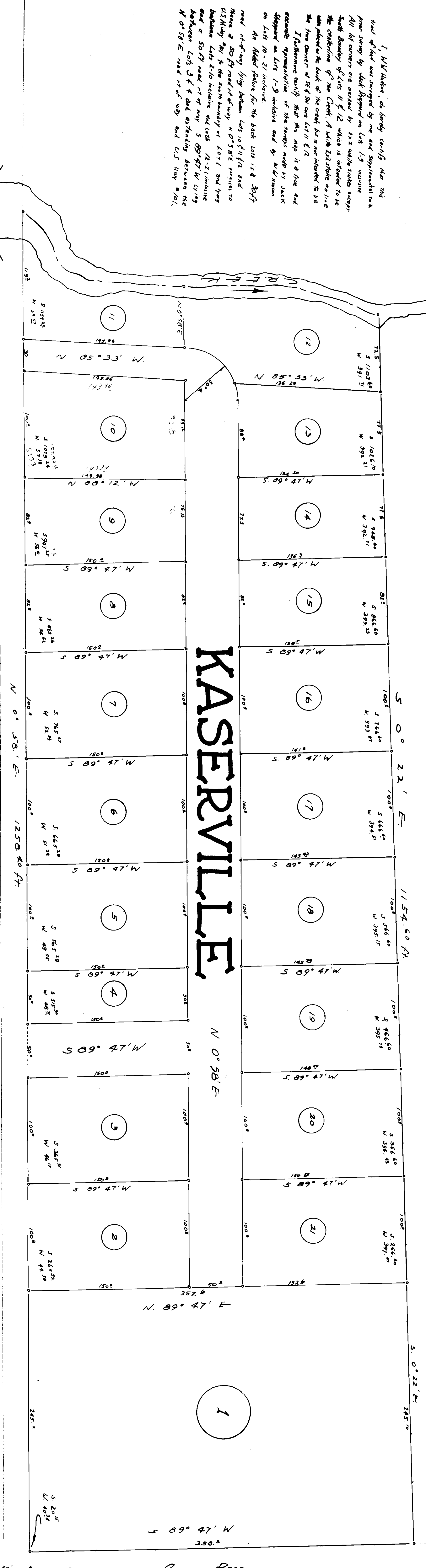


A/64

Scale 1 inch = 40 feet January 24 1948

TRACT LOCATED IN THE NE 1/4 SE 1/4 SECT 24 T1S R10W1W.



KASERVILLE

TILLAMOOK

U S HIGHWAY No. 101

Section 24 T1S R10W
County of Oregon
Section 24 T1S R10W

I, W. W. Wilson, do hereby certify that this tract of land was surveyed by me and represented to a prior survey by what appeared on lots 1-9 inclusive. All lot corners are marked by 2x2 white stakes except South boundary of lots 11 & 12 which is intended to be the centerline of the Creek. A white 2x2 stake on line was placed on the bank of the creek but is now intended to be the true corner of lot 11 & 12.

I furthermore certify that this map is a true and accurate representation of the survey made by JACK HOPKINS on lots 1-9 inclusive and by W. W. Wilson on lots 10-21 inclusive.

An added feature for the back lots is a 30 ft road or driveway lying between lots 10 & 11 & 12 and there a 50 ft road or driveway N 0° 58' E parallel to U.S. Highway 101 to the south boundary of lot 1 and lying between lots 2-10 inclusive and lots 12-21 inclusive and a 50 ft road or driveway S 89° 47' W lying between lots 3 & 4 and extending between the N 0° 58' E road or driveway and U.S. Hwy # 101.