

Stake for N.W. cor.
Lot #1, sec. 5, T. 2 S. R. 10 W, W.M.
S. 89° 02' E. 846.5'

5" I.P. for N.W.
cor. of S.W. 1/4
of N.E. 1/4 of
section 5.

COUNTY ROAD

N. 89° 02' W. 1310' ±

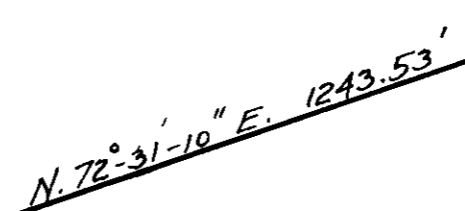
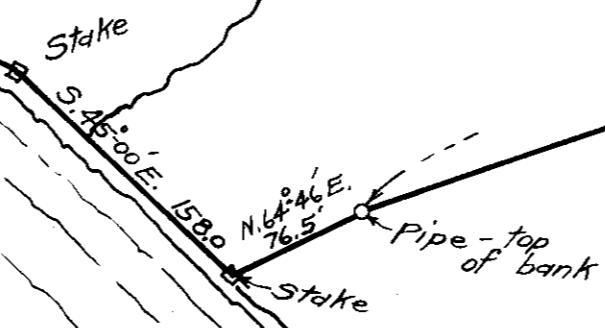
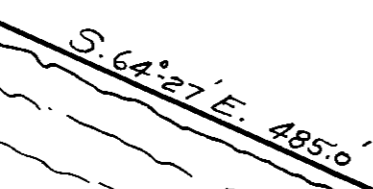
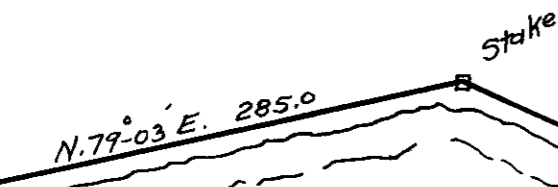
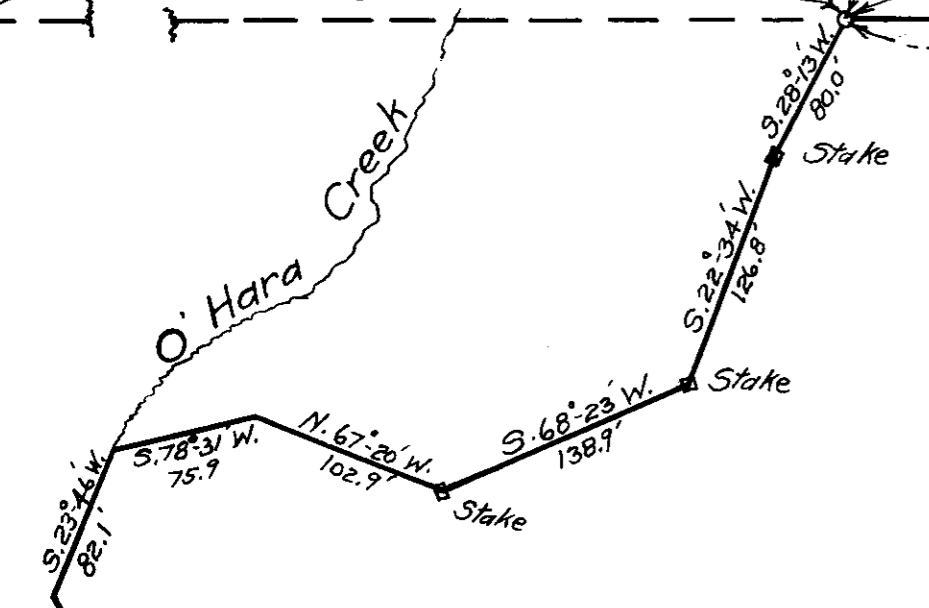
1731.5'



O'Hara Creek

Creek

NETARTS BAY



SURVEY IN N.W. 1/4 OF
SECTION #5-T.2 S. R. 10 W, W.M
July, 1933. Scale: 1 in. = 100 ft.

Beasley & Stehr, Engineers.
419 Commerce Bldg.
Portland, Ore.

B-682 0-1111