

Section 10

Section 11

WILLSON RIVER HIGHWAY

Cleared Land 1505 Acres

Stump and

Fern Land 4114 Acres

PROPERTY OF
GORDON C. PRENTICE
 In Sections 10 and 11, T15, R8W, W.M.
 Tillamook County, Oregon
 Survey and Map by W.A. Markham, Reg. Engr #1842
 May 1948

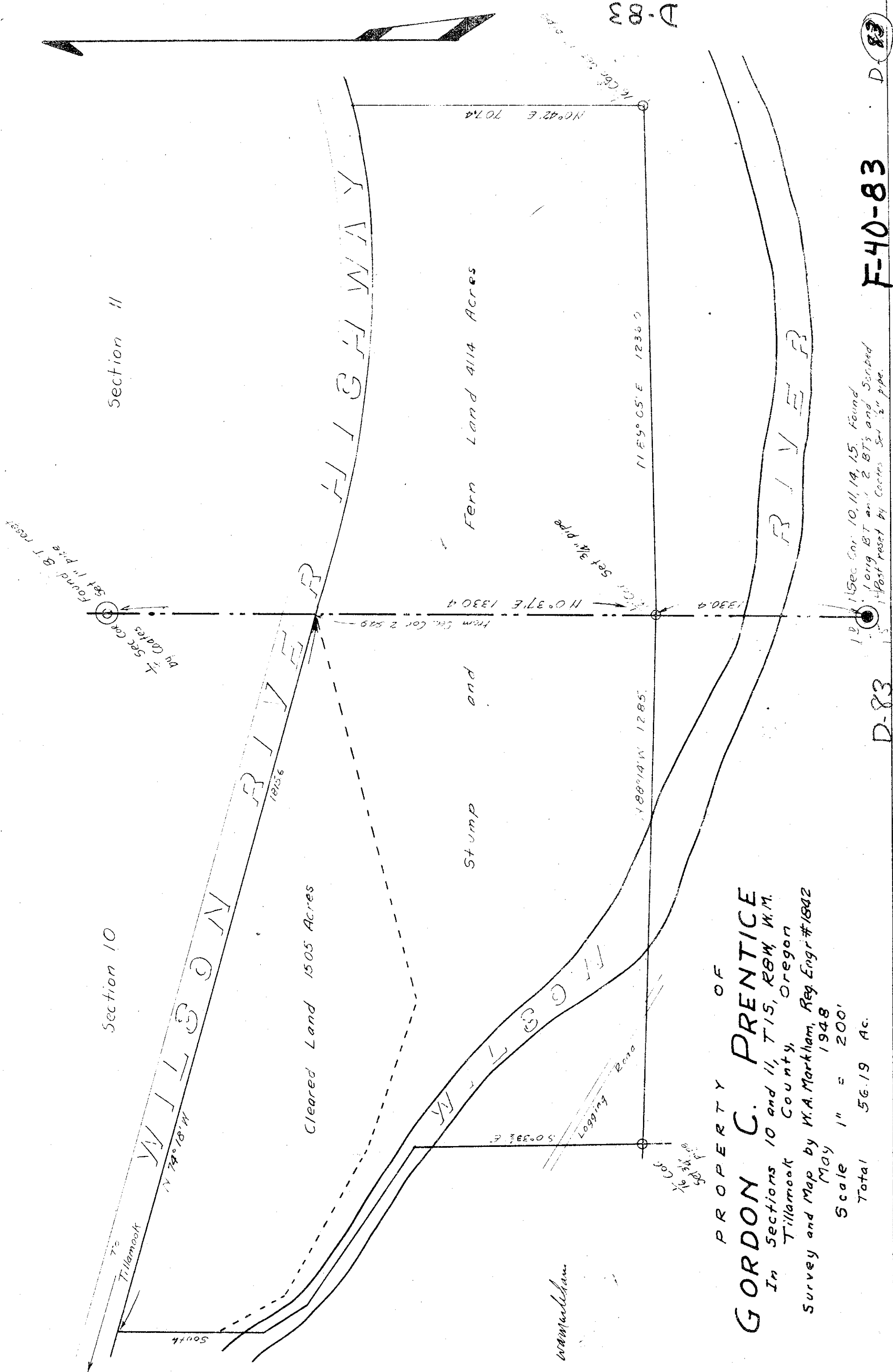
Scale 1" = 200'
 Total 56.19 Ac.

F-40-83

D-83

D-83

15 Sec. Cor. 10, 11, 14, 15. Found
 1 Orig. B.T. and 2 B.T.'s and Scribed
 1 Post reset by Cor. Set 2" pipe.



D-83