

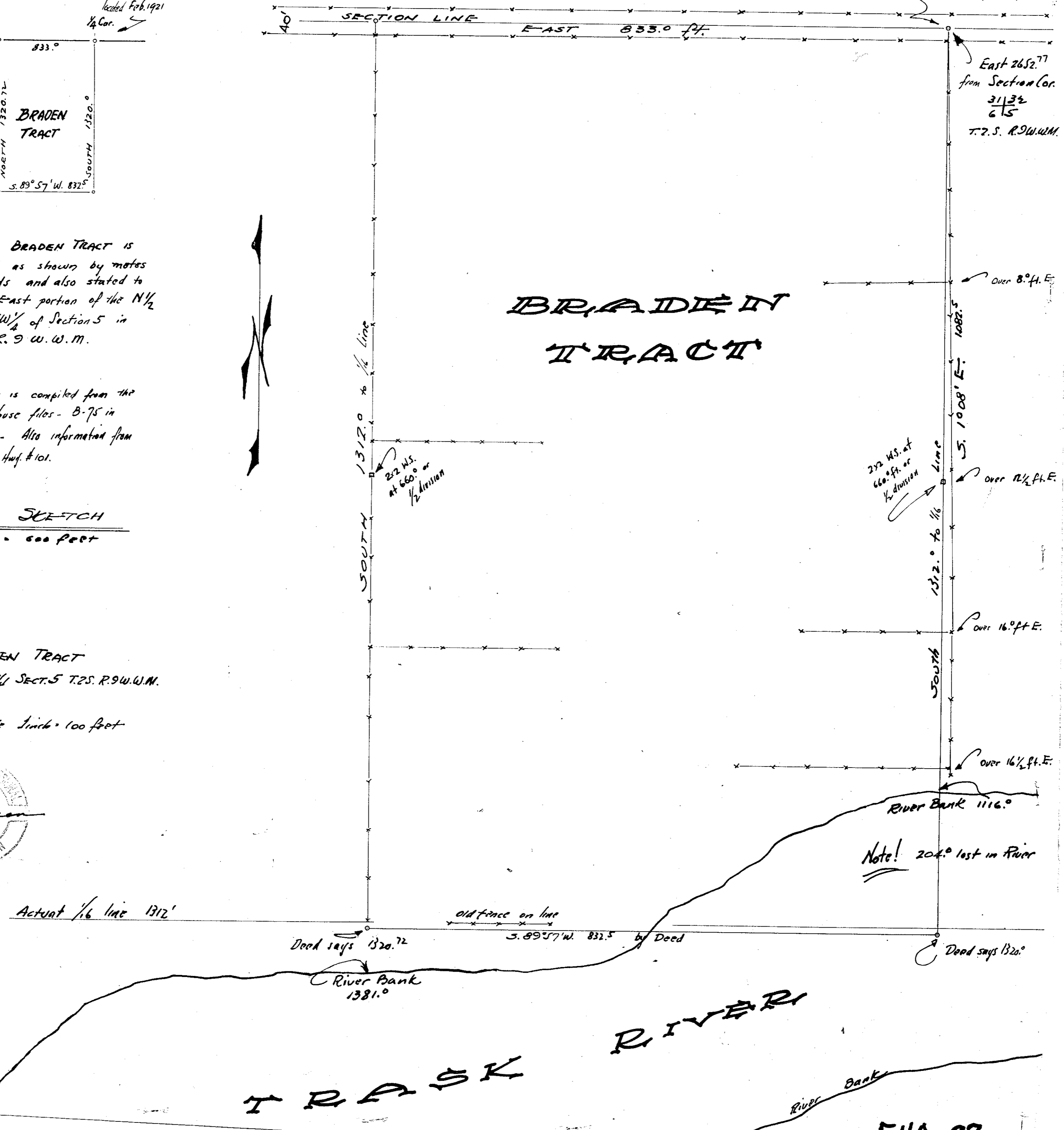
Note! This BRADEN TRACT is described as shown by notes and bounds and also stated to be the East portion of the N 1/2 of the NW 1/4 of Section 5 in T.2S. R.9W.W.M.

The above information is compiled from the Tillamook County Court House files - B-75 in the County Surveyor office - Also information from the State Highway Dept. for St. Hwy. #101.

LOCATION SKETCH
Scale 1 inch = 500 feet

LEONARD BRADEN TRACT
LOCATED IN THE NE 1/4 NW 1/4 SECT. 5 T.2S. R.9W.W.M.

June 8, 1949 Scale 1 inch = 100 feet



D-87

87

F40-87