

INITIAL BOUNDARY
 CLARENDALE TOWNSHIP
 1525° NORTH
 1296.° EAST
 1/2 Corner Common to
 Sections 22 & 27
 T.45. R.10W.W.M.

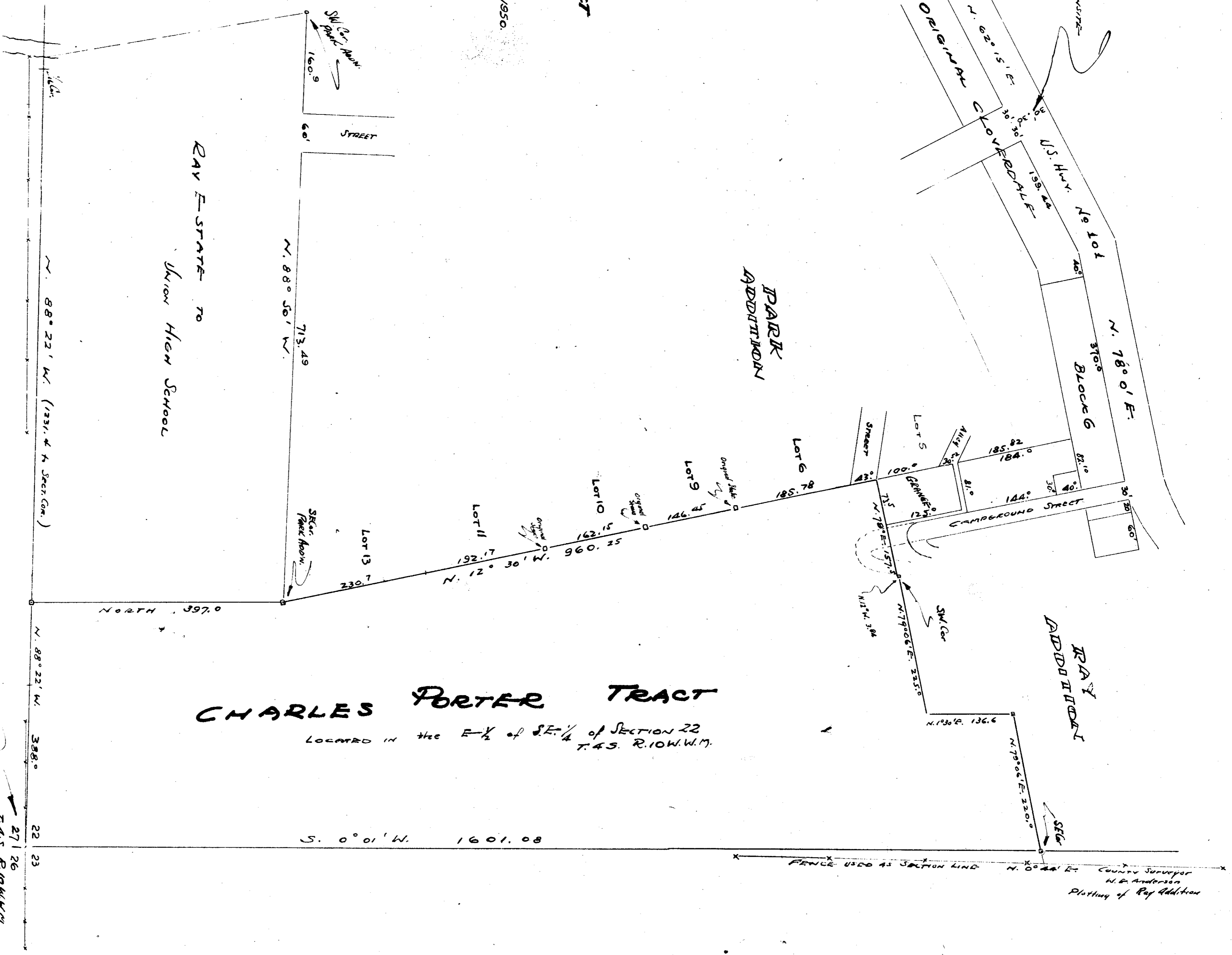
CHARLES PORTER TRACT

SECTION 22
 T.45. R.10W.W.M.

Scale 1 inch = 100 feet March 1950.

Shaded area

N. 88° 22' W. 1231.4' from 1/4
 corner of Section 22
 to the Initial Point of Clarendale



D-91 F-40-91