

DESCRIPTION OF TRACTS  
IVAN E GIST

Starting from the NE Corner of Lot 3 in Sec. 21 T. 45 R. 10 W. M. and running thence N. 89° 01' E. 3390 ft. to the Nestucca River thence N. 89° 54' E. 214.5 ft. thence S. 1° 02' E. 1741.2 ft. to the Nestucca River thence S. 76° 02' W. 427.7 ft. thence S. 87° 30' W. 433.2 ft. thence N. 79° 33' W. 204.6 ft. thence N. 13° 39' W. 399.4 ft. thence N. 46° 16' E. 423.1 ft. thence N. 0° 57' W. 288.5 ft. thence N. 75° 55' W. 189.6 ft. to the Sec. Line thence along said line N. 1° 34' E. 543.1 ft. to the SE Corner of Lot 4 in said Sec. 21, thence N. 0° 38' E. 2627.3 ft. to place of beginning. Containing 77.03 acres, more or less.

Also the NW 1/4 of NE 1/4 of Sec. 21 T. 4 S. R. 10 W. W. M. Containing 19.12 acres more or less.

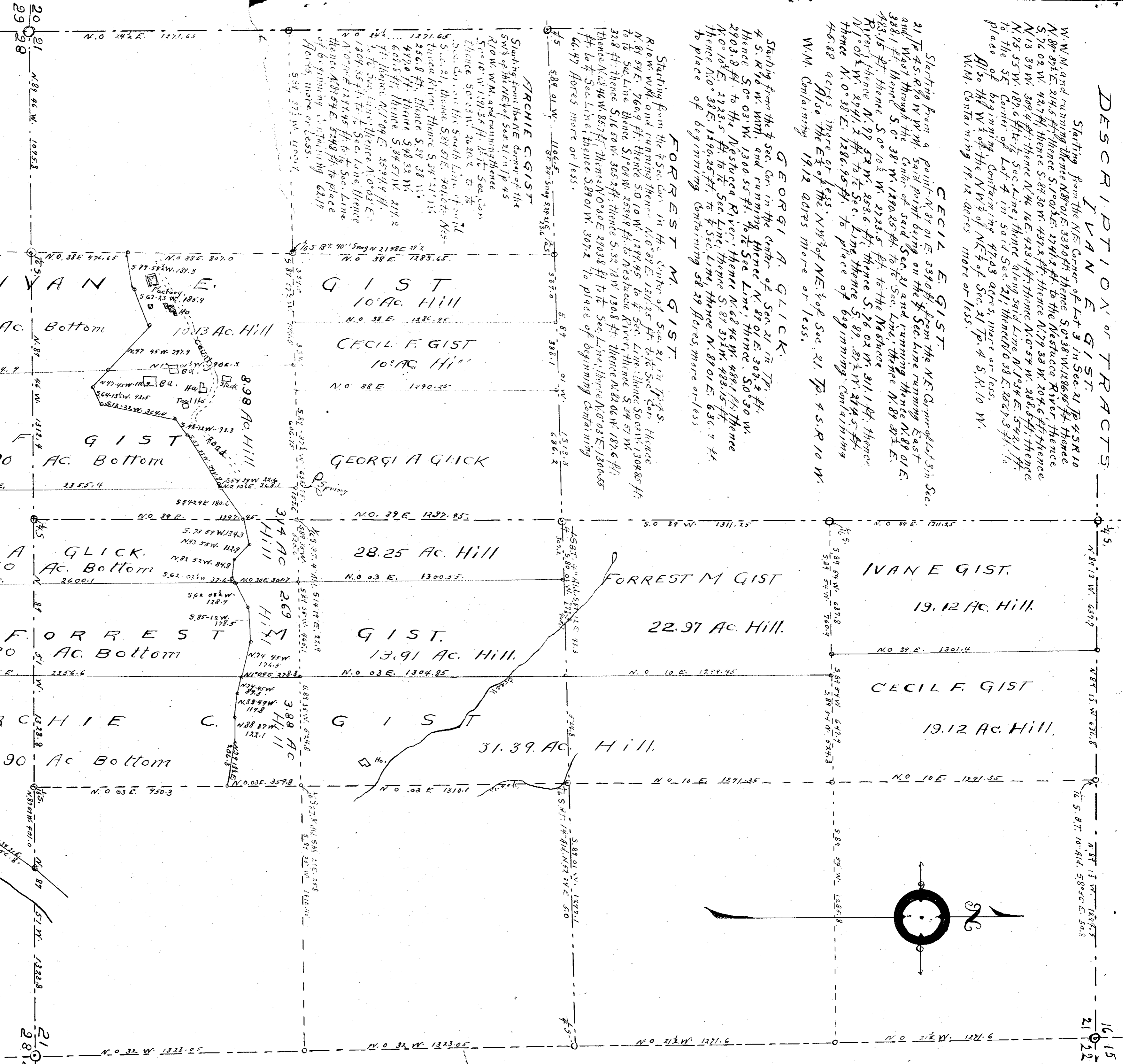
**CECIL E. GIST:**  
Starting from a point N. 89° 01' E. 3390 ft. from the NE Corner of Lot 3 in Sec. 21 T. 4 S. R. 10 W. W. M. said point being on the Sec. line running East and West through the center of said Sec. 21 and running thence N. 89° 01' E. 3881 ft. thence S. 0° 38' W. 1870.85 ft. to the Sec. Line thence N. 89° 54' E. 483.15 ft. thence S. 0° 10' W. 2723.5 ft. to the Nestucca River thence N. 79° 33' W. 232.6 ft. thence S. 76° 02' W. 311.1 ft. thence N. 1° 01' W. 2941.2 ft. to the Sec. Line thence S. 87° 30' W. 214.5 ft. thence N. 0° 38' E. 1286.95 ft. to place of beginning. Containing 45.88 acres more or less.

Also the E 1/2 of the NW 1/4 of NE 1/4 of Sec. 21 T. 4 S. R. 10 W. W. M. Containing 19.12 acres more or less.

**GEORGI A. GLICK:**  
Starting from the 1/2 Sec. Cor. in the center of Sec. 21 in T. 4 S. R. 10 W. W. M. and running thence N. 89° 01' E. 307.2 ft. thence S. 0° 03' W. 1300.55 ft. to the Sec. Line thence S. 0° 30' W. 2903.8 ft. to the Nestucca River thence N. 68° 46' W. 489.1 ft. thence N. 0° 16' E. 1923.5 ft. to the Sec. Line thence S. 87° 30' W. 483.15 ft. thence N. 0° 38' E. 1286.95 ft. to the Sec. Line thence N. 89° 01' E. 636.2 ft. to place of beginning. Containing 58.29 acres more or less.

**FORREST M. GIST:**  
Starting from the 1/2 Sec. Cor. in the center of Sec. 21 in T. 4 S. R. 10 W. W. M. and running thence N. 0° 31' E. 1311.25 ft. to the Sec. Cor. thence N. 81° 54' E. 766.9 ft. thence S. 0° 10' W. 1297.45 ft. to the Sec. Line thence S. 00° 31' W. 1304.85 ft. to the Sec. Line thence S. 1° 04' W. 2599.4 ft. to the Nestucca River thence S. 34° 57' W. 328 ft. thence S. 16° 50' W. 365.2 ft. thence S. 2° 28' W. 1808 ft. thence N. 82° 06' W. 187.6 ft. thence N. 84° 46' W. 857 ft. thence N. 0° 30' E. 2903.8 ft. to the Sec. Line thence N. 0° 31' E. 1300.55 ft. to the 1/2 Sec. Line thence S. 89° 01' W. 307.2 ft. to place of beginning. Containing 66.47 Acres more or less.

**ARCHIE GIST:**  
Starting from the NE Corner of the SW 1/4 of the NE 1/4 of Sec. 21 in T. 4 S. R. 10 W. W. M. and running thence S. 1° 10' W. 1913.5 ft. to the Sec. Cor. thence S. 0° 33' W. 2820.2 ft. to the Sec. Cor. in the South Line of said Sec. 21, thence S. 89° 57' E. 901.6 ft. to the Nestucca River thence S. 34° 57' W. 256.8 ft. thence S. 29° 38' W. 499.0 ft. thence S. 48° 32' W. 608.5 ft. thence S. 34° 57' W. 217.2 ft. thence N. 1° 04' E. 2599.4 ft. to the Sec. Line thence N. 0° 31' E. 1300.55 ft. to the Sec. Line thence N. 0° 31' E. 1300.55 ft. to the place of beginning. Containing 68.19 Acres more or less.



MAP OF SUBDIVISION  
OF  
A.C. GIST ESTATE  
IN  
SECS 21 & 28 T. 4 S. R. 10 W. W. M.  
Scale 1"=300'  
November 1913  
G. J. Doyzsky, Dep. Co. Surv.

DESCRIPTION OF TRACTS

**I V A N E. G I S T**  
 Starting from the NE Corner of Lot 3 in Sec 21, T4S, R10W, and running thence N89°01' E 339.0 ft, thence S0°38' W 1286.95 ft, thence N89°37' E 214.5 ft, thence S1°02' E 274.1 ft to the Nestucca River, thence S76°02' W 427.7 ft, thence S84°30' W 437.2 ft, thence N79°33' W 2046 ft, thence N13°31' W 309.4 ft, thence N46°16' E 423.1 ft, thence N0°54' W 258.5 ft, thence N75°55' W 187.6 ft to 1/2 Sec line, thence along said line N°34' E 542.1 ft to the SE corner of Lot 4 in said Sec 21, thence N0°38' E 2567.3 ft to place of beginning, containing 47.03 acres more or less.  
 Also the W 1/2 of the NW 1/4 of Sec 21, T4S, R10W, W.M. containing 19.12 acres more or less.

**C E C I L E. G I S T**  
 Starting from a point N89°01' E 339.0 ft from the NE corner of Lot 3 in Sec 21, T4S, R10W, W.M. said point being on the 1/2 Sec. line running East and West through the center of said Sec 21, and running thence N89°01' E 338.1 ft, thence S0°38' W 1290.25 ft to 1/2 Sec line, thence N89°37' E 483.15 ft, thence S0°10' W 2723.5 ft to the Nestucca River, thence N77°52' W 253.6 ft, thence S78°02' W 311.1 ft, thence N1°02' W 2741.2 ft to 1/2 Sec line, thence S89°32' W 214.5 ft, thence N0°38' E 1286.95 ft to place of beginning, containing 45.88 acres more or less.  
 Also the E 1/2 of the NW 1/4 of Sec 21, T4S, R10W, W.M. containing 19.12 acres more or less.

**G E O R G I A. G L I C K**  
 Starting from the 1/2 Sec. Car in the center of Sec 21 in T4S, R10W, W.M. and running thence N89°01' E 307.2 ft, thence S0°03' W 1300.55 ft to 1/2 Sec line, thence S0°30' W 2903.8 ft to the Nestucca River, thence N68°46' W 489.1 ft, thence N0°10' E 2723.5 ft to 1/2 Sec line, thence S89°32' W 483.15 ft, thence N0°38' E 1290.25 ft to 1/2 Sec line, thence N89°01' E 636.2 ft to place of beginning, containing 58.29 Acres more or less.

**F O R R E S T M. G I S T**  
 Starting from the 1/2 Sec. Car in the center of Sec 21 in T4S, R10W, W.M. and running thence N0°39' E 1311.25 ft to 1/2 Sec. Car, thence N89°34' E 780.9 ft, thence S0°10' W 1294.45 ft to 1/2 Sec line, thence S0°30' W 2903.8 ft to the Nestucca River, thence N68°46' W 489.1 ft, thence N0°10' E 2723.5 ft to 1/2 Sec line, thence S89°32' W 483.15 ft, thence N0°38' E 1290.25 ft to 1/2 Sec line, thence N89°01' E 636.2 ft to place of beginning, containing 66.47 Acres more or less.

**A R C H I E C. G I S T**  
 Starting from the NE corner of the SW 1/4 of the NE 1/4 of Sec 21 in T4S, R10W, W.M. and running thence S0°10' W 1291.35 ft to 1/2 Sec. Car, thence S0°03' W 2620.2 ft to 1/2 Sec. Car on the South line of said Sec 21, thence S89°32' W 529.38 ft, thence S76°02' W 427.7 ft, thence S84°30' W 437.2 ft, thence N79°33' W 2046 ft, thence N13°31' W 309.4 ft, thence N46°16' E 423.1 ft, thence N0°54' W 258.5 ft, thence N75°55' W 187.6 ft to 1/2 Sec line, thence along said line N°34' E 542.1 ft to the SE corner of Lot 4 in said Sec 21, thence N0°38' E 2567.3 ft to place of beginning, containing 62.17 Acres more or less.

