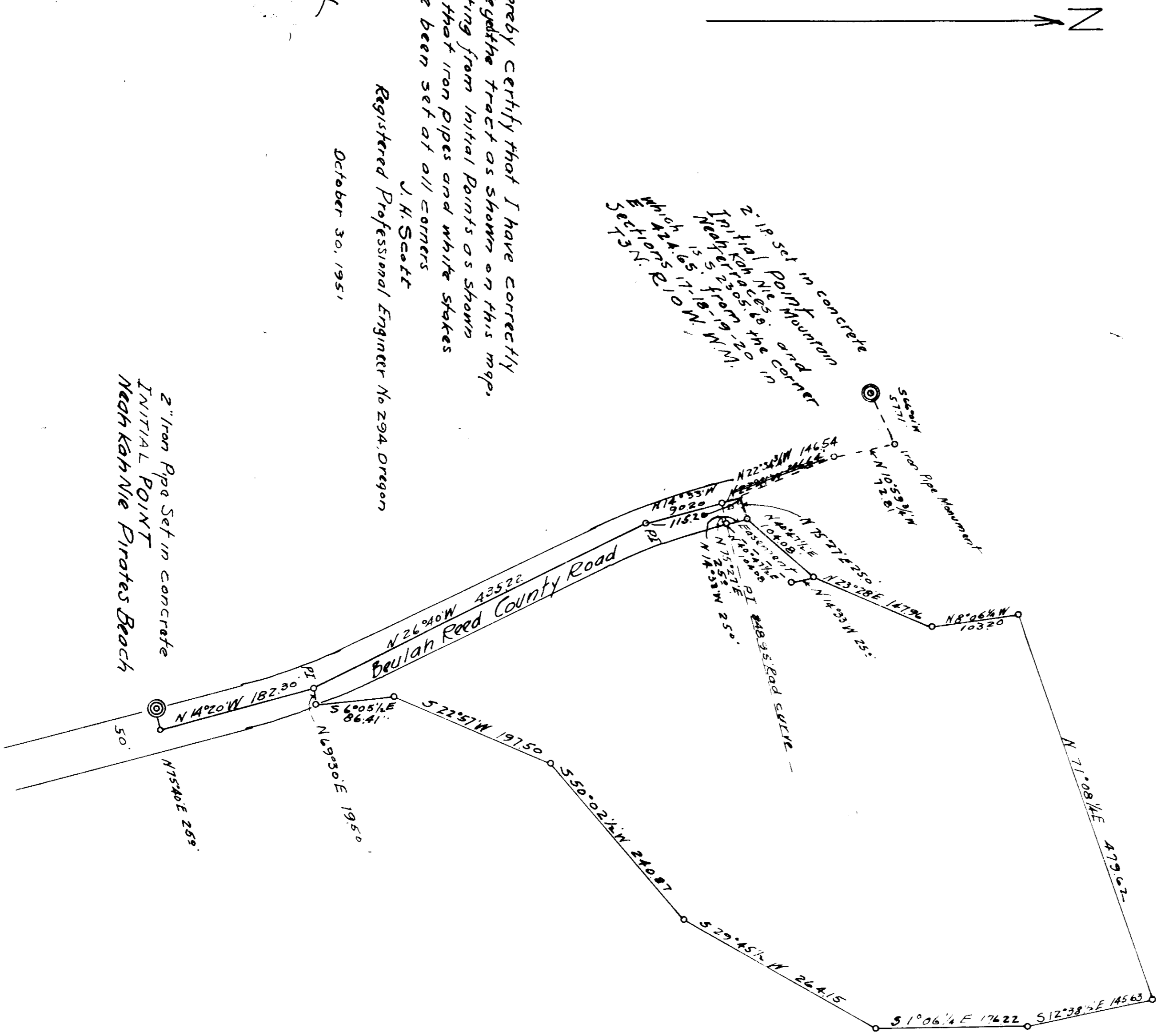


SURVEY OF TRACT
FOR BARNEY LUCAS
IN
SECTION 20, T3N, R10W, WM.
Scale 1"=100'



I hereby certify that I have correctly
surveyed the tract as shown on this map,
starting from initial points as shown
and that iron pipes and white stakes
have been set at all corners.

J. H. Scott
Registered Professional Engineer No 294, Oregon

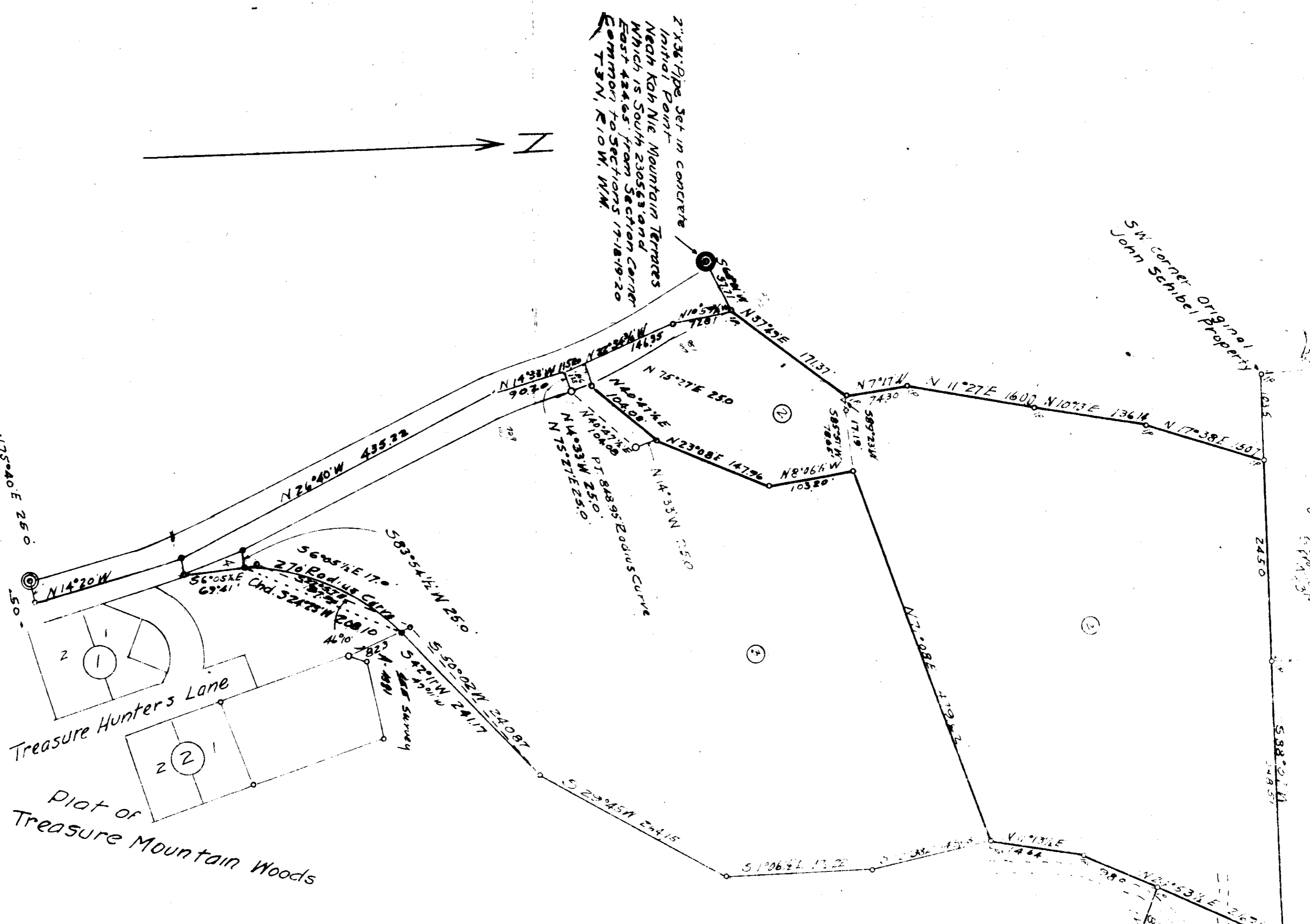
October 30, 1951

J. H. Scott

2" Iron Pipe Set in concrete
INITIAL POINT
Near Kahnie Pirates Beach

2" IP set in concrete
at top of Pollock Mountain
Triangular 25.58' the corner
nearest to a 200
15.51' 10' N.N.W.
which is 10' N.N.W.
Section 20

- 1. Easement for Road
- 2. Lucas to Purcell Tract 2
- 3. Original Tract Correction Deed
- 4. Purcell to Lucas - for Road



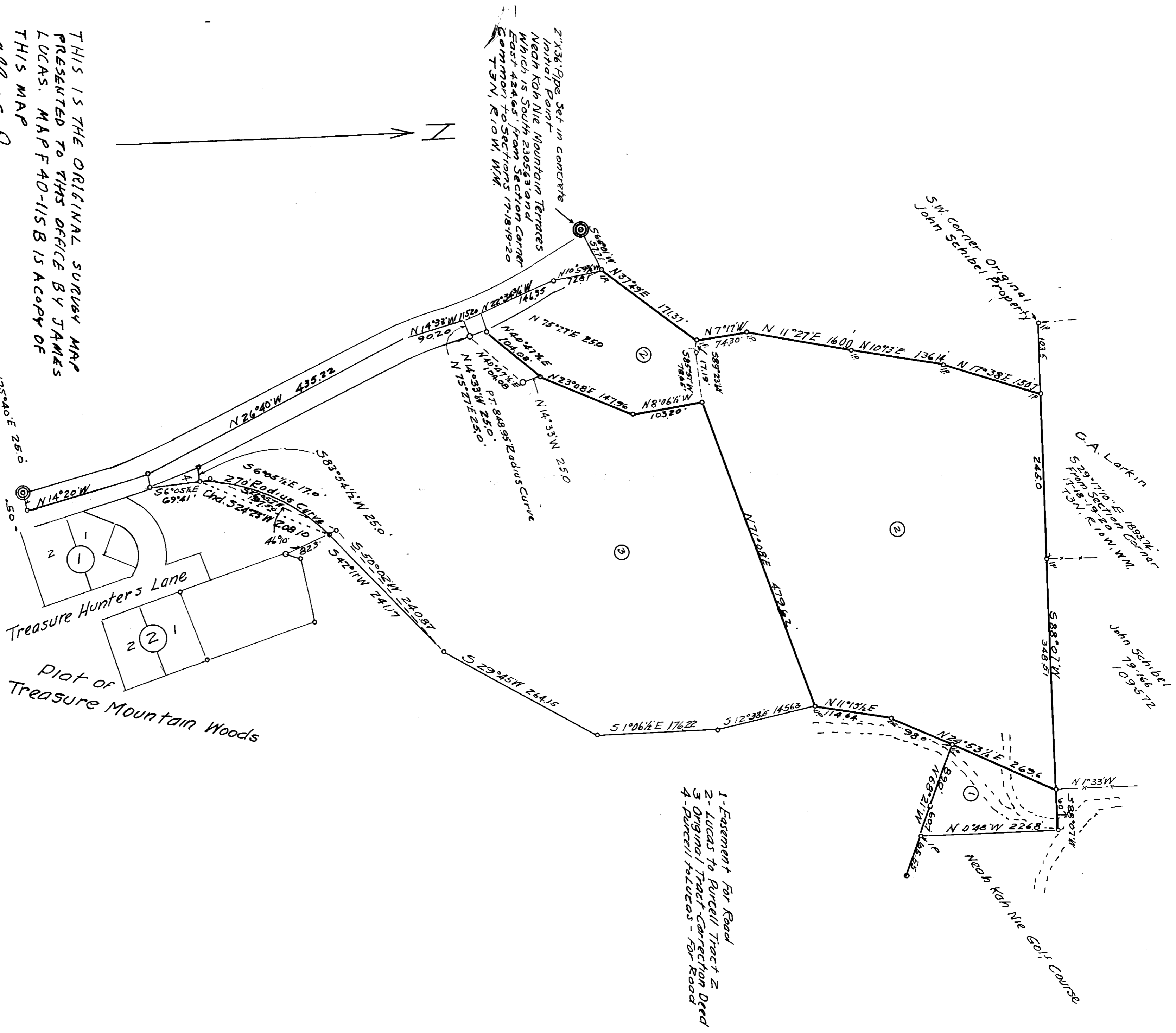
SURVEY OF TRACT
FOR
BARNEY LUCAS
IN SECTION 20, T3N, R10W, WM
Scale 1"=100'
APRIL 1953

I hereby certify that I have correctly surveyed the tracts as shown on this map starting from initial points as shown and that iron pipes and white stakes have been set at all corners

J. H. Scott
Registered Professional Engineer No. 294

J.H. Scott

Map B
F-40-115



THIS IS THE ORIGINAL SURVEY MAP
PRESENTED TO THIS OFFICE BY JAMES
LUCAS. MAP F 40-115 B IS A COPY OF
THIS MAP

Allen E. Bunnam, C.S.



2" Iron Pipe Set in CONCRETE
POINT
Near Kah Nie Pirates Beach

I hereby certify that I have correctly
surveyed the tracts as shown on this map
starting from initial points as shown
and that iron pipes and white stakes
have been set at all corners

J. H. Scott

Registered Professional Engineer No. 294

SURVEY OF TRACT
FOR
BARNEY LUCAS
IN SECTION 20, T3N, R10W, WM
Scale 1"=100'
APRIL 1953

DEFENDANT'S
EXHIBIT
106A

T-40-115 B of 48
300

J.H. Scott