

COORDINATES FOR P.O.B.

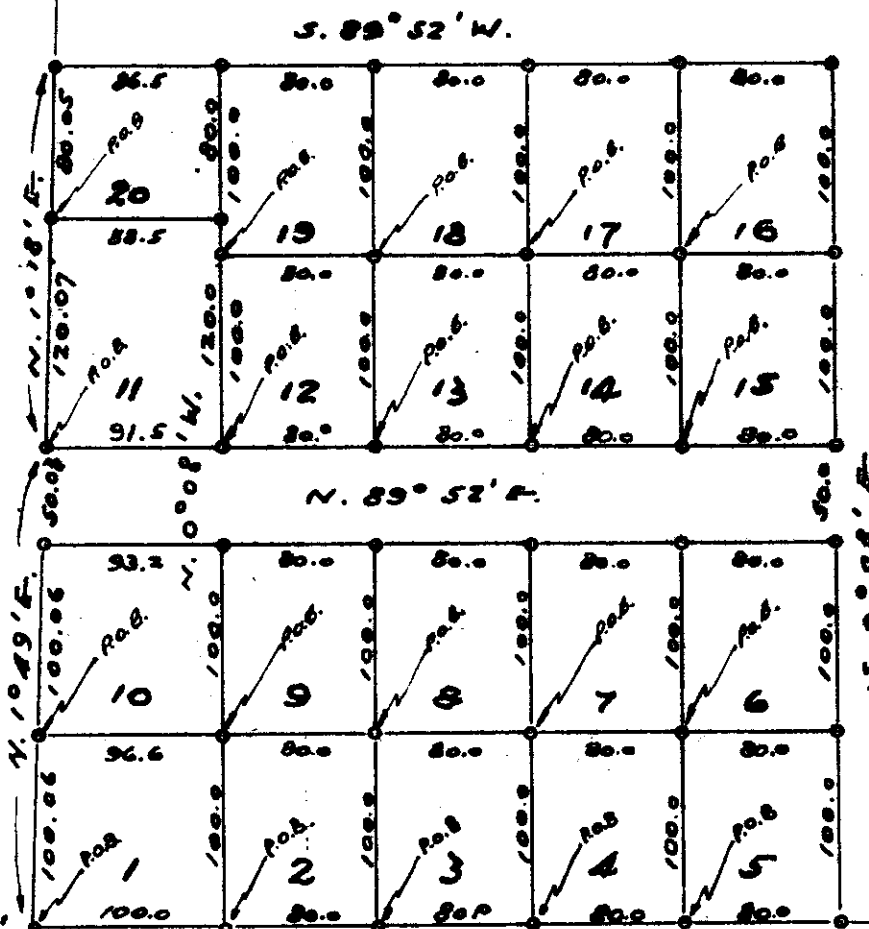
LOT NO.	NORTH	WEST
1	470.58	1707.81
2	470.81	1607.81
3	471.00	1527.81
4	471.19	1447.81
5	471.38	1367.81
6	571.38	1368.04
7	571.19	1448.04
8	571.00	1528.04
9	570.81	1608.04
10	570.58	1708.64
11	720.58	1699.89
12	720.81	1608.39
13	721.00	1528.39
14	721.19	1448.39
15	721.38	1368.39
16	821.38	1368.62
17	821.19	1448.62
18	821.00	1528.62
19	820.81	1608.62
20	840.58	1697.17



HESS - CRISWELL TRACTS

SECTION 13 T. 15. R. 10 W. W. M.

Scale 1 inch = 100 feet May 1952



Note: Intended to be 600'

SQUIR ROAD

INITIAL POINT FOR County Road to U.S. Hwy No. 101

Suppress COUNTY ROAD (Deed B 48-390 48-366)

S. 80° 55' W.

U.S. Hwy No. 101

Note! All Lots are tied to the 1/4 Corner FOR SECTION 13 T. 15. R. 10 W. W. M. and SECTION 18 T. 15. R. 9 W. W. M.

D-123

F-40-123