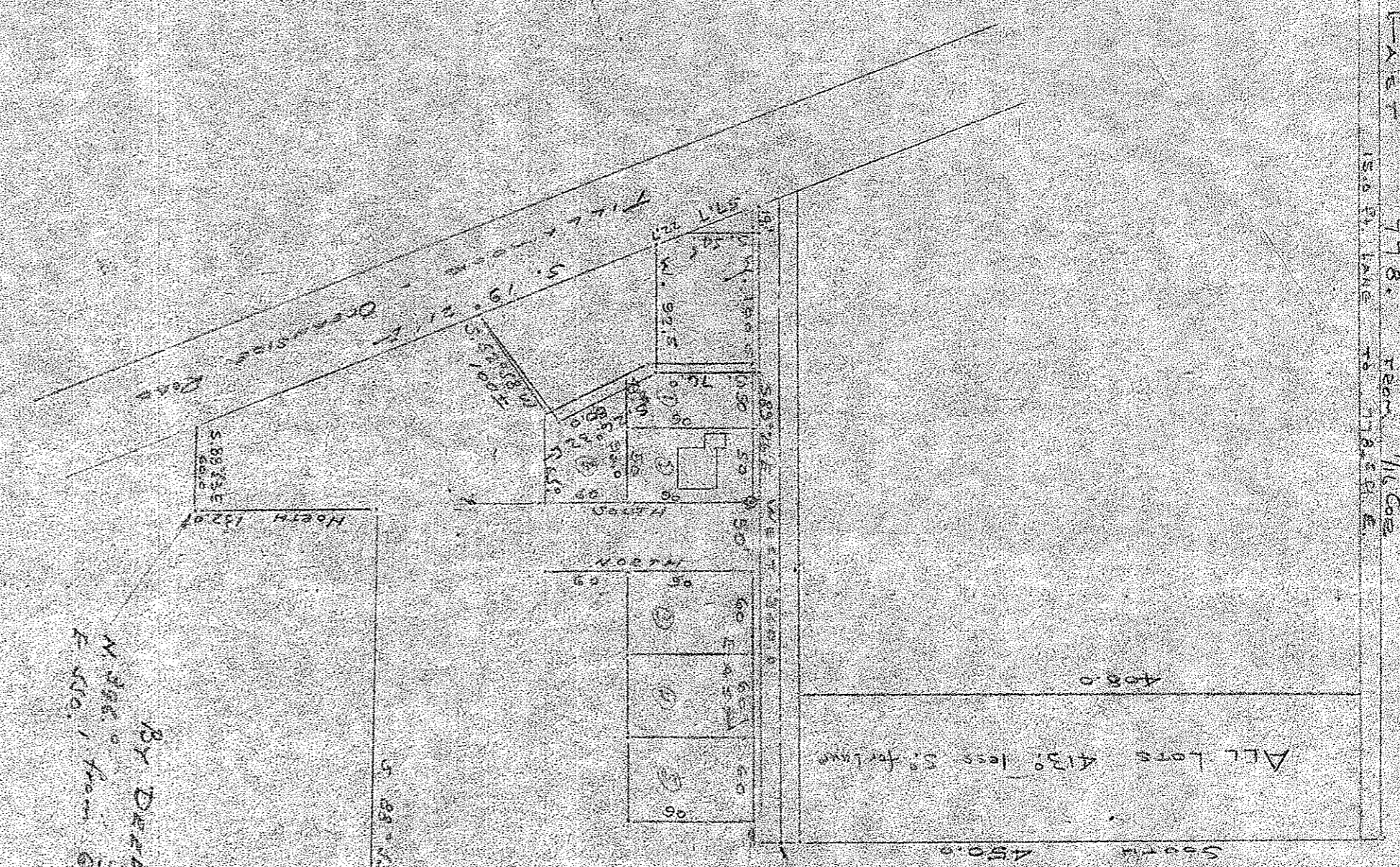


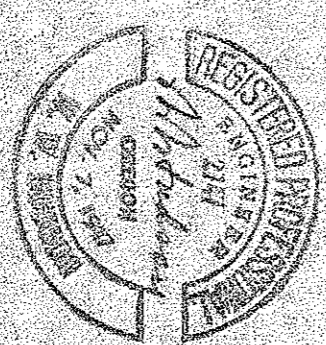
715 ROAD
31.32
6.5
725 ROAD



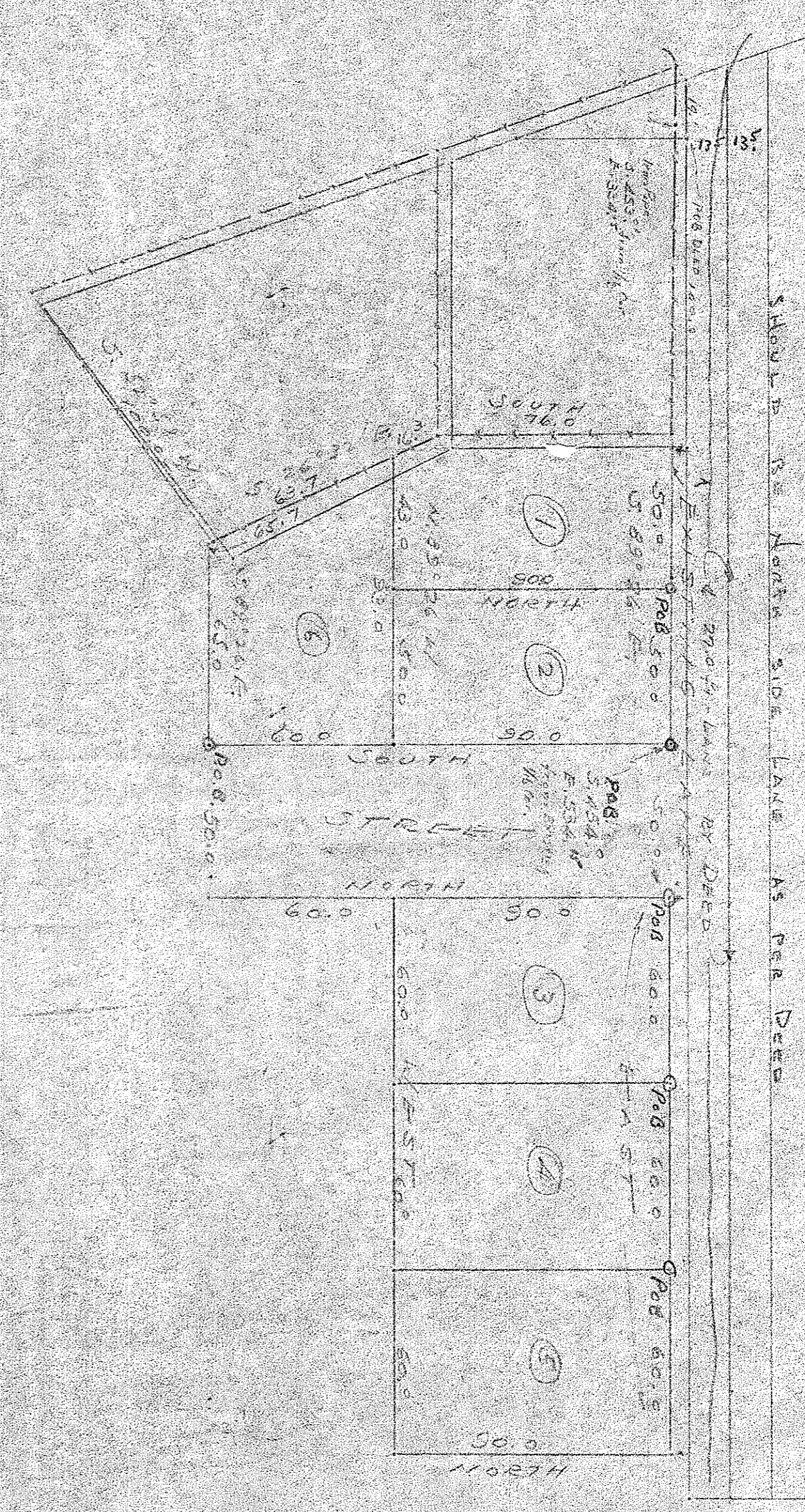
NOTE -
If McCar is corrected NORTH 1974
THIS E MOVES WEST 78 FT

TRUE LOCATION BY DEED Bk. 14th v
of 270 ft. line
located 425 ft. South of 1/2 Sec
715 ft. line of 1/2 Sec
SANDS LANE 12.500
OR THEREABOUTS

MC CAR
NOT IN
CONCORD



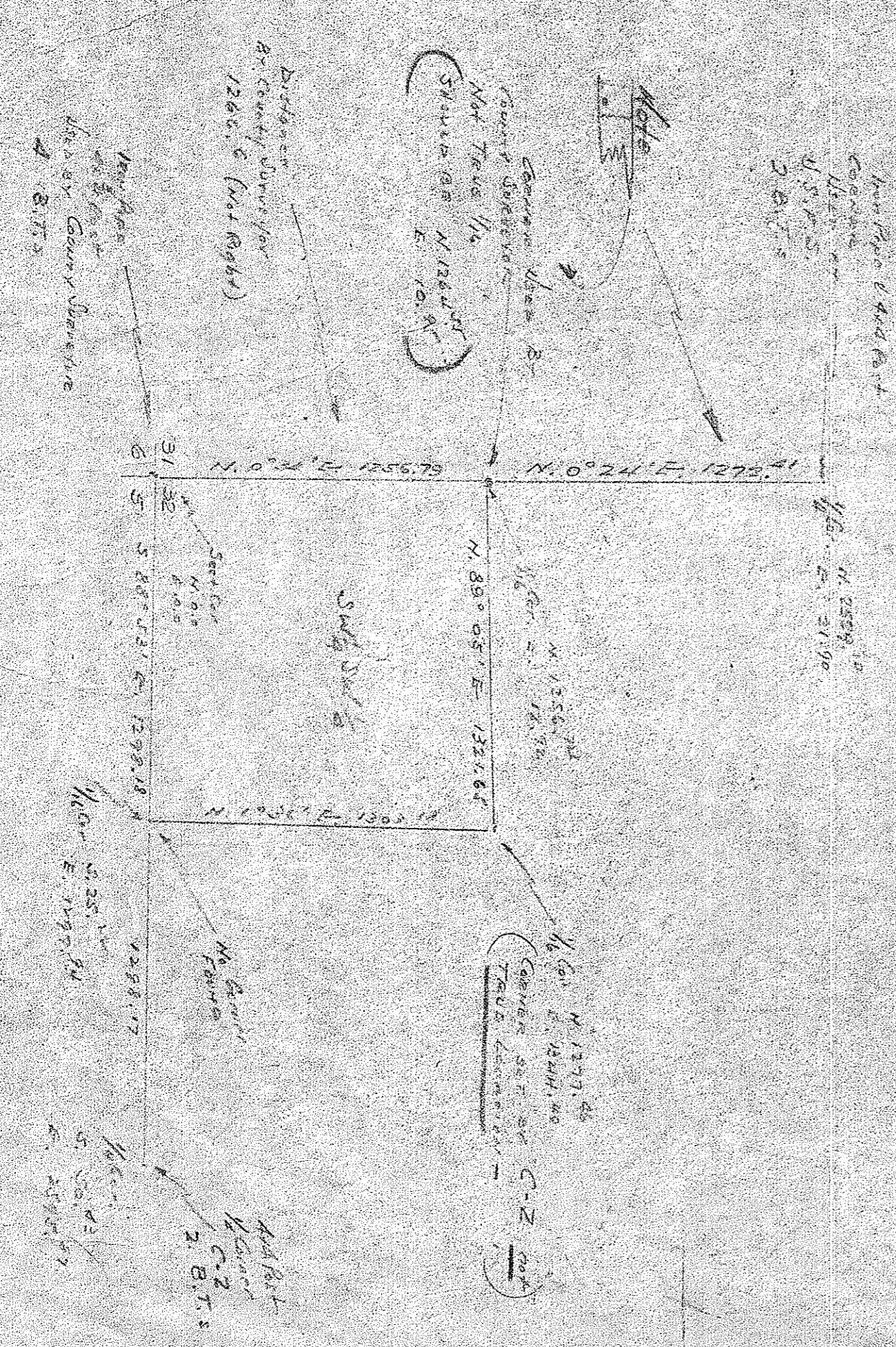
EXISTING Mc CAR
NOT CORRECTED
POSITION



Scale 1 inch = 20 feet

- 20.6. follows from UNCORRECTED
- ① N. 808.24 E. 297.01
 - ② N. 802.24 E. 547.07
 - ③ N. 802.24 E. 597.07
 - ④ N. 802.24 E. 657.07
 - ⑤ N. 802.24 E. 717.07
 - ⑥ N. 802.24 E. 547.07

- 20.6. follows from EXISTING Mc CAR
- ① S. 453.5 E. 484.0
 - ② S. 454.0 E. 534.0
 - ③ S. 454.5 E. 584.0
 - ④ S. 454.5 E. 634.0
 - ⑤ S. 454.5 E. 704.0
 - ⑥ S. 604.0 E. 1304.0



EXISTING CORNERS
SECTION 32 T.15. R.10.111111
NORTHWEST CORNER

Scale 1 inch = 50 feet

D-125
F-40-125