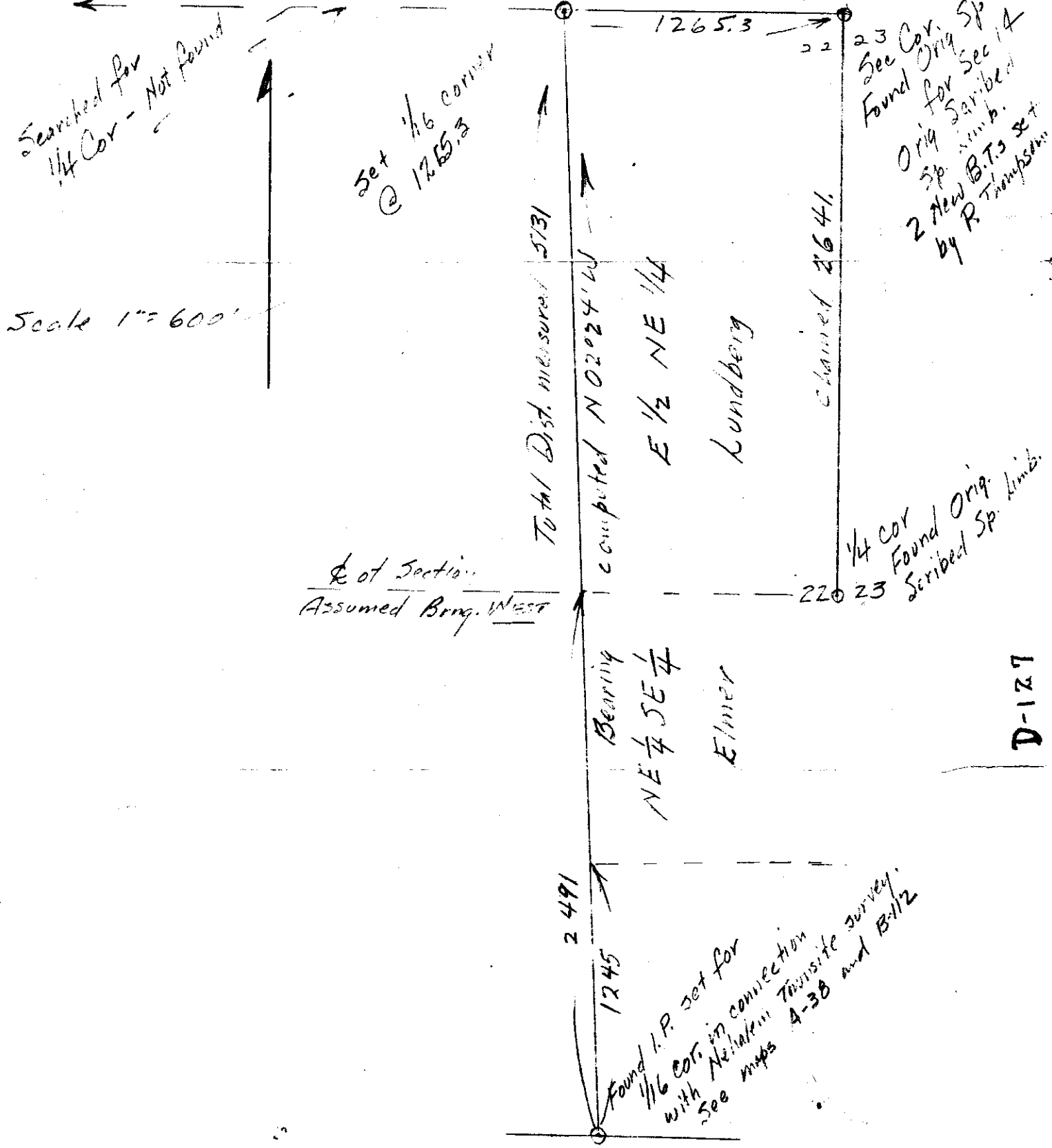


SUBDIVISION SEC 22 T3N R10W

W. W. Williams Staff Compass Chain & Sundry Survey  
Feb 1952

computed for Corner  $\frac{16}{21} \frac{15}{22}$  by P. Thompson 1951  
Section Line N89°37'W 5061.4 to position  $\frac{15}{22}$



F-40-127

D-127