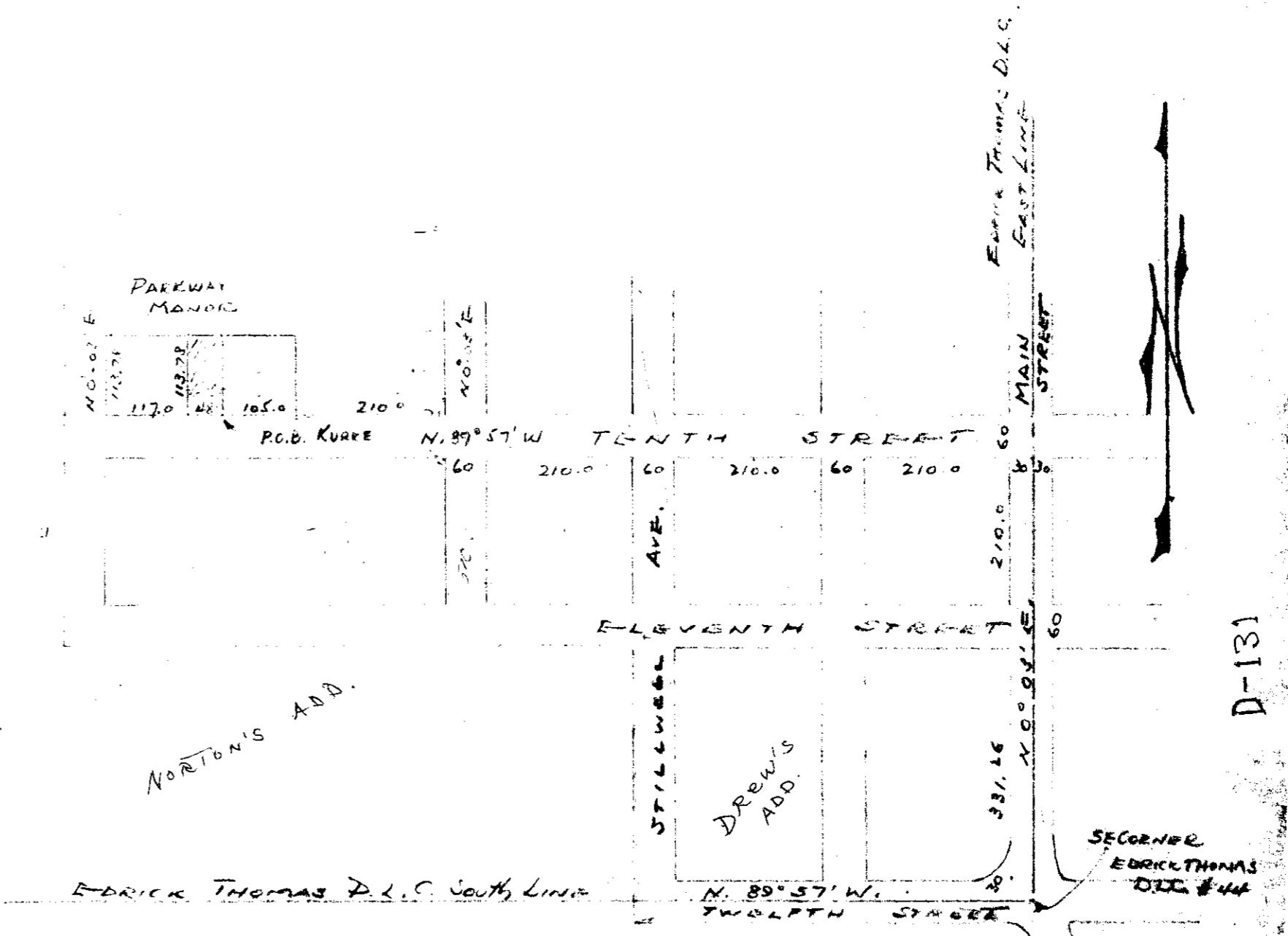


Note!

GARAGE OVER LINE	1.85'
EAVES ADDITIONAL	0.70'
TOTAL	2.65'
GARAGE EAST OF LINE	2.10'
SPACE	0.45'

IRON SPIKE  
 KURKE P.O.B.  
 NORTH 692.<sup>26</sup>  
 WEST 1155.<sup>00</sup>  
 FROM THE S.E. CORNER  
 OF THE EDRIK THOMAS D.L.C. #44

Note!  
 ORIGINAL DEED  
 P.O.B. NORTH 695.<sup>35</sup>  
 WEST 1155.<sup>0</sup>



SKETCH LOCATION  
 KURKE TRACT IN SHELDON AREA  
 Scale 1 inch = 200 feet Feb 1953.

SE 1/4 SE 1/4