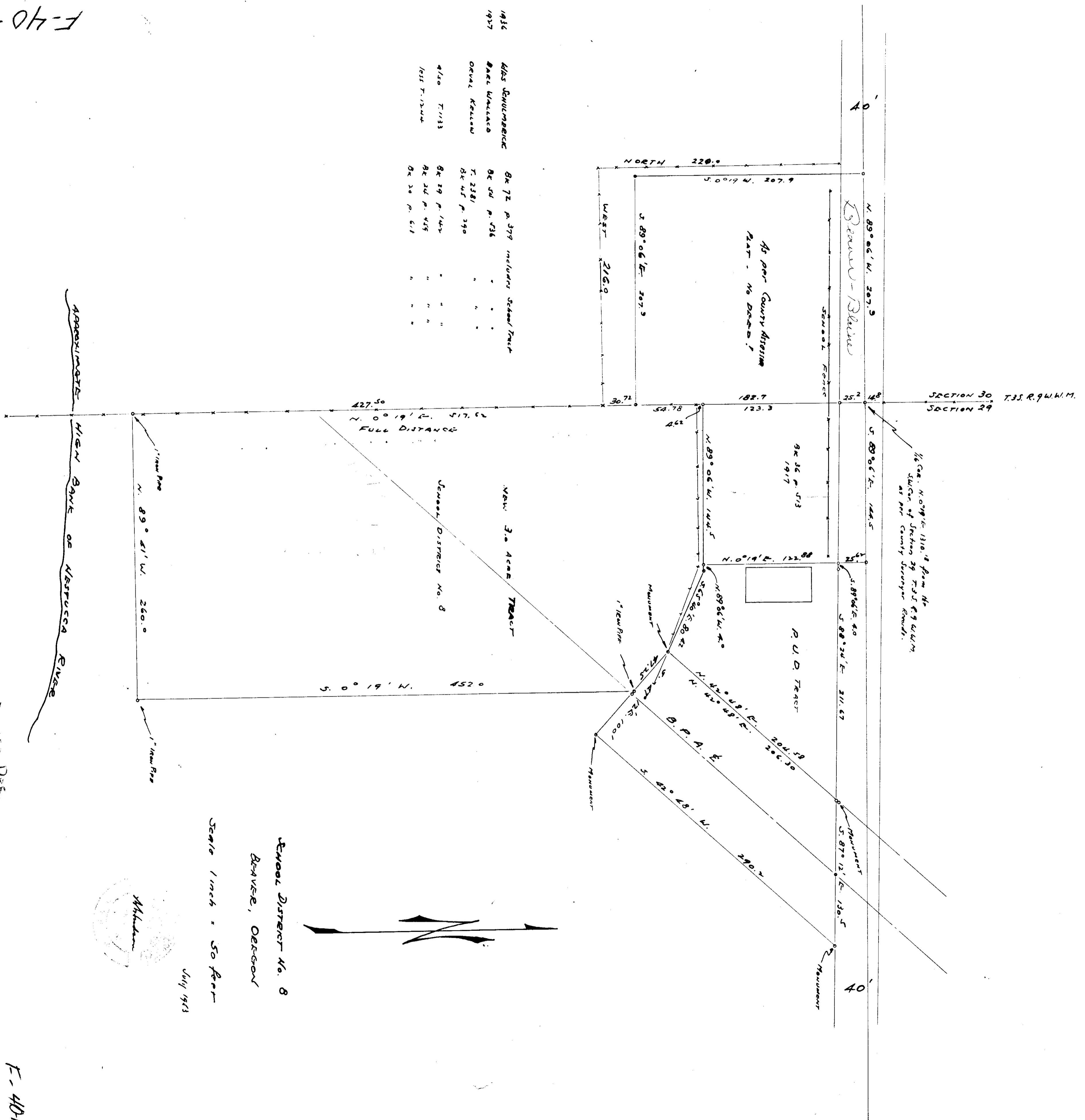


SCHOOL DISTRICT No. 8 - BEAVER, OREGON



1936	WES SCHUMBERG	8x 72 p. 379	holders School Tract
1937	BAEL WATKINS	8x 54 p. 436	" " "
	ORVAL KELLAM	T. 2381	" " "
		8x 45 p. 390	" " "
4/30	T. 1133	8x 39 p. 144	" " "
1935	T. 1244	8x 24 p. 425	" " "
		8x 20 p. 511	" " "

SCHOOL DISTRICT No. 8
BEAVER, OREGON

Scale 1 inch = 50 feet
July 1943



F-40-141

SCHOOL DIST. 8 - BEAVER, ORE.
(BY HUBSON)
D-141

F-40-141
D-141

F-40-141