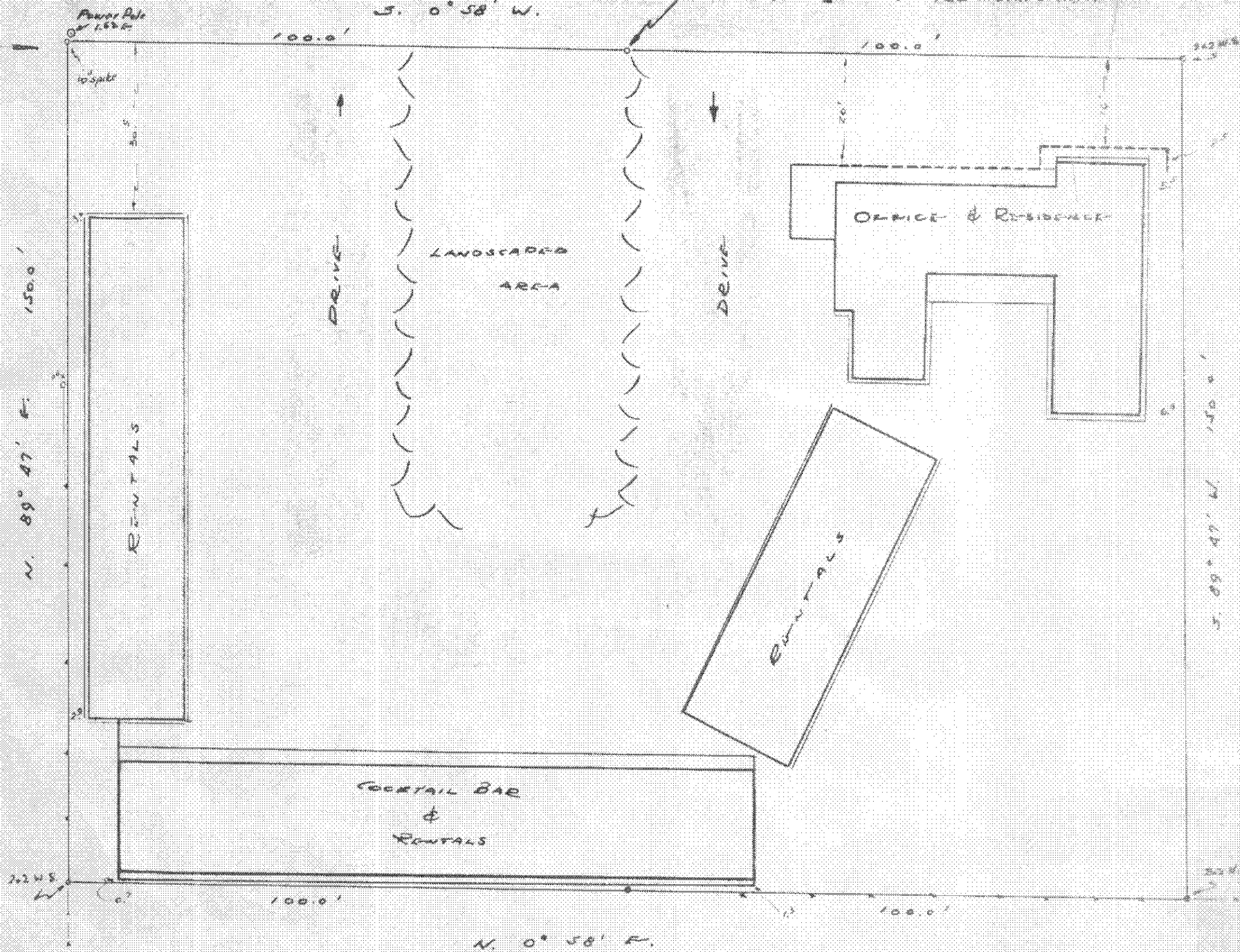


U.S. HIGHWAY No. 101

P.O.B. PARCEL II  
 South 365.31  
 West 26.17  
 from 1/4 Section 19 T.15. R.9 N.W. 1/4

P.O.B. PARCEL I  
 South 265.32  
 West 26.17  
 from 1/4 Section 19  
 T.15. R.9 N.W. 1/4



# EL RANCHO MOTEL

Located in NE 1/4 SE 1/4 Section 24 T.15. R.10 N.W. 1/4  
 Scale: 1 inch = 100 ft Area Location  
 1 inch = 20 ft Detail Map  
 January 1952

Abraham

ENGINEER CERTIFICATION

I, William H. Huber, do hereby certify and swear that this drawing is compiled from notes taken during a survey of said property. The buildings are located in respect to the outlines as shown in the Detail Map as are all existing fences and additions. The perimeter of the buildings include all sub base & areas.

