

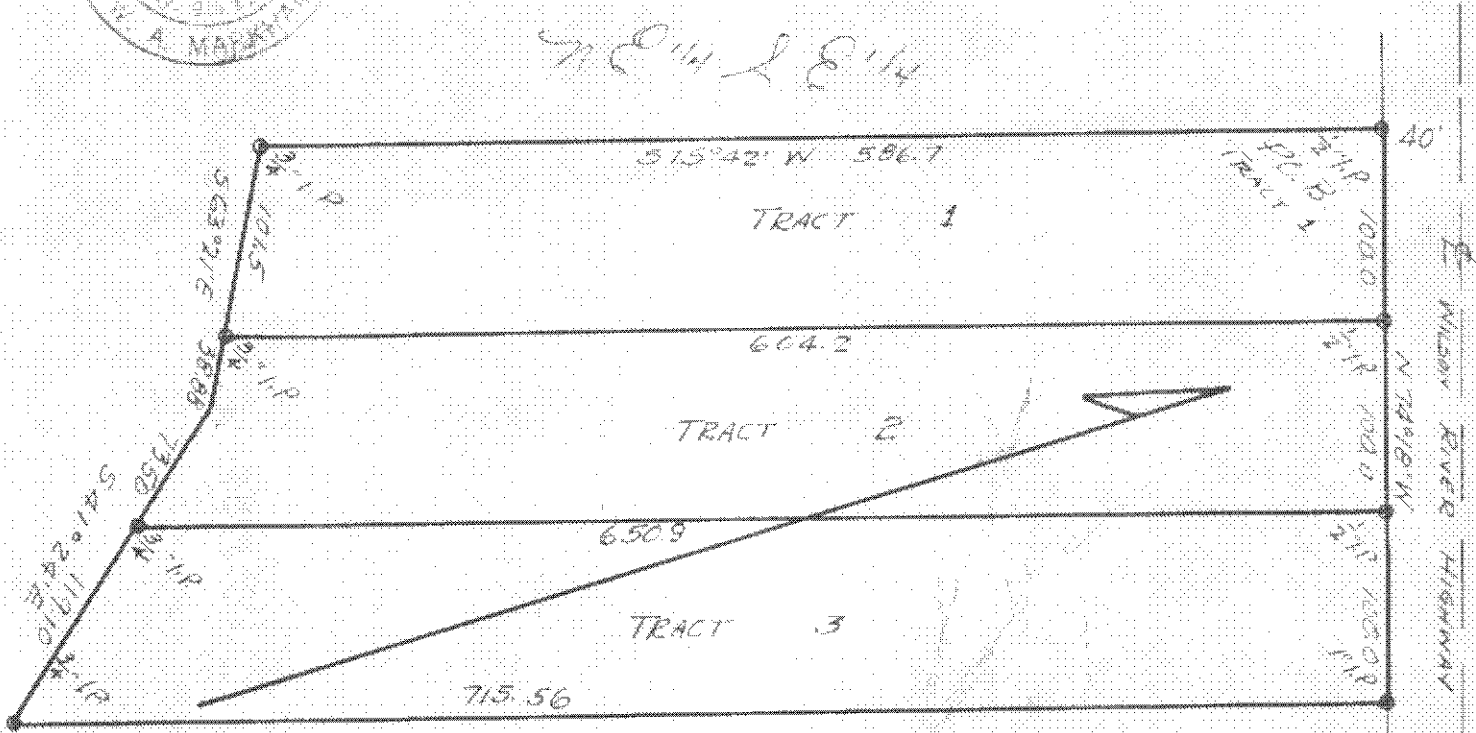


# L. L. KOKER TRACTS

SCALE 1" = 100'

SEC 10, T15, R8W

*W.A. Markham*



**TRACT #1-** Beginning at a point in the south R/W line of the Wilson River Highway, North 2593.74 feet and West 928.51 feet, from the Southeast corner of Section 10, T15, R8W, W.M.; and running thence South 15°42' West 586.7 feet; thence South 63°21' East 101.5 feet; thence North 15°42' East 604.2 feet, to the R/W line; thence North 74°18' West 100.0 feet to the Point of Beginning; and being in the Southeast quarter of Section 10, T15, R8W, W.M., Tillamook County, Oregon.

**TRACT #2-** Beginning at a point in the south R/W line of the Wilson River Highway, North 2366.68 feet and West 730.34 feet from the southeast corner of Section 10, T15, R8W, W.M.; and running thence South 15°42' West 604.2 feet; thence South 53°21' East 58.88 feet; thence South 41°24' East 73.60 feet; thence North 15°42' East 650.9 feet, to the R/W line; thence North 74°18' West 100.0 feet to the Point of Beginning; and being in the Southeast quarter of Section 10, T15, R8W, W.M., Tillamook County, Oregon.

**TRACT #3-** Beginning at a point in the south R/W line of the Wilson River Highway, North 2539.62 feet and West 654.07 feet from the Southeast corner of Section 10, T15, R8W, W.M.; and running thence South 15°42' West 650.9 feet; thence South 41°24' East 119.10 feet; thence North 15°42' East 715.56 feet, to the R/W line; thence North 74°18' West 100.0 feet, to the Point of Beginning; and being in the Southeast quarter of Section 10, T15, R8W, W.M., Tillamook County, Oregon.

**CERTIFICATE OF SURVEYOR**

I, W.A. Markham, Registered Engineer No. 1842, certify that this map is made from notes of an actual survey made by me on January 11, 1957; and that the corner markers of the tracts are located as shown hereon.

*W.A. Markham*

*(See also map A-4-55)*

*F-40-165*  
*D-165*

**F-40-165**