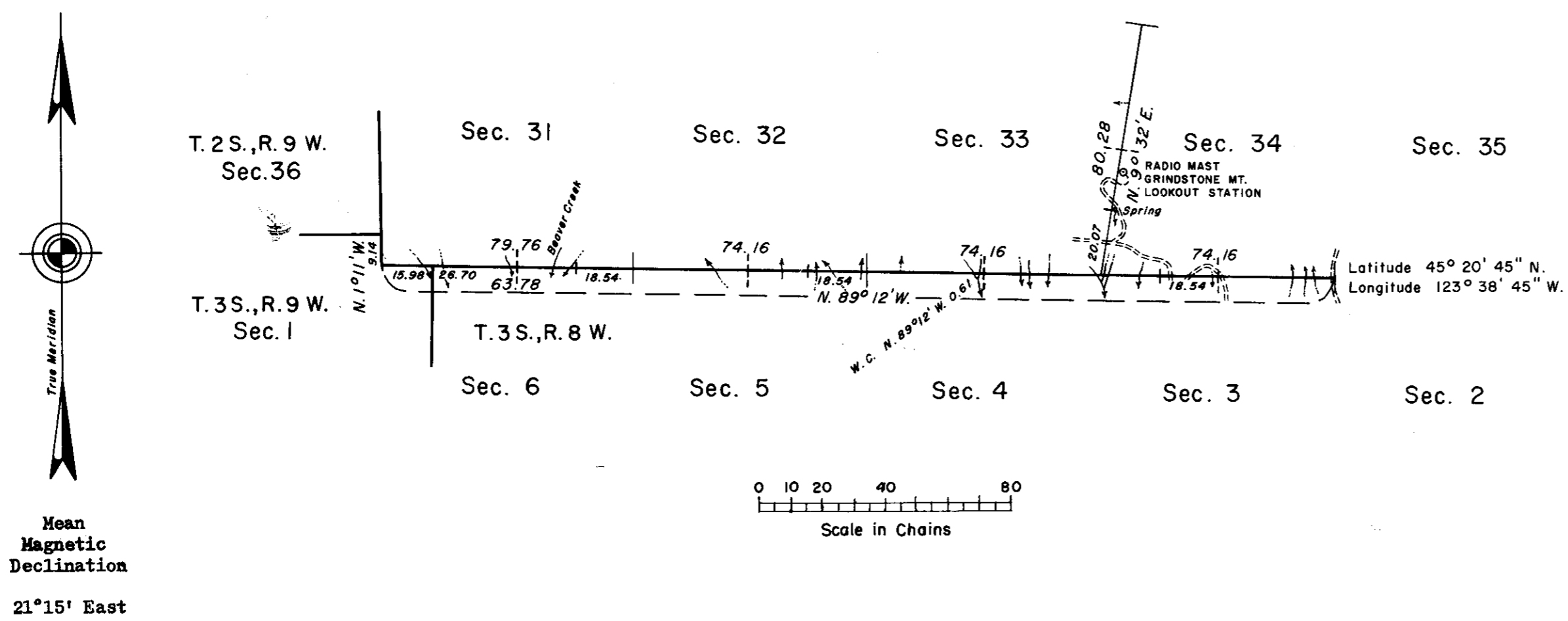


TOWNSHIP 2 SOUTH, RANGE 8 WEST, OF THE WILLAMETTE MERIDIAN, OREGON.

DEPENDENT RESURVEY

D-174



This plat represents a retracement and reestablishment of a portion of the south boundary and a portion of the subdivisional lines of T. 2 S., R. 8 W., Willamette Meridian, Oregon, designed to restore the corners in their true original location according to the best available evidence.

Boundaries and subdivisional lines surveyed by H. Meldrum in 1882.

Dependent resurvey of a portion of the south boundary and a portion of the subdivisional lines of T. 2 S., R. 8 W., Willamette Meridian, Oregon, executed by Joseph S. Gawron, August 3, 1956 to March 6, 1958, under Special Instructions dated June 12, 1956 and Supplemental Special Instructions dated August 1, 1956, which provide for the surveys included under Group No. 323, Oregon.

UNITED STATES DEPARTMENT OF THE INTERIOR
BUREAU OF LAND MANAGEMENT
Washington, D. C. September 30, 1958

This plat is strictly conformable to the approved field notes, and the survey, having been correctly executed in accordance with the requirements of law and the regulations of this Bureau, is hereby accepted.

For the Director
Earl G. Harrington
Cadastral Engineering Staff Officer

R.J.L.

F-40-174