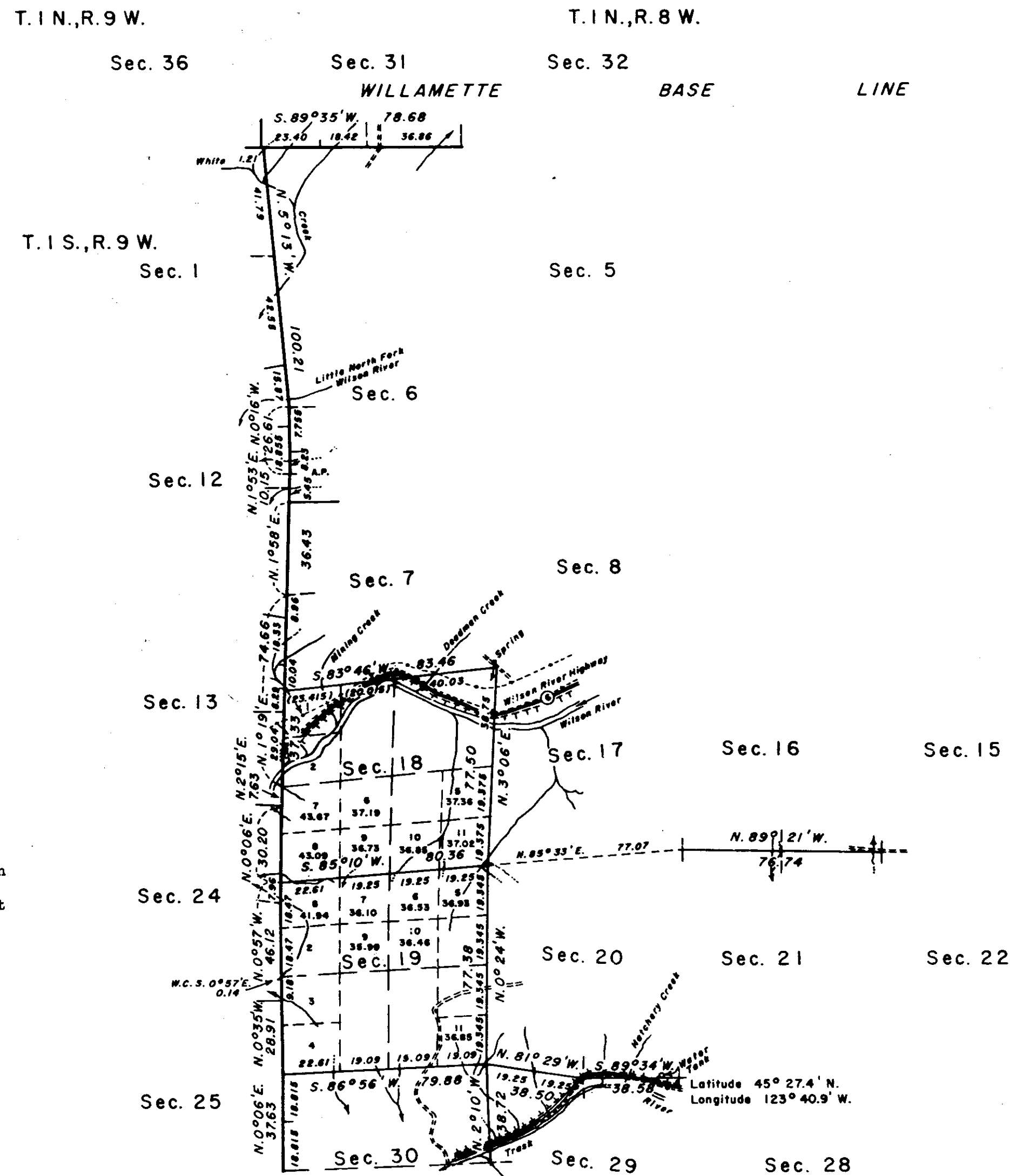
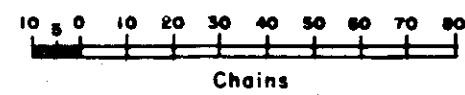


TOWNSHIP 1 SOUTH, RANGE 8 WEST, OF THE WILLAMETTE MERIDIAN, OREGON. DEPENDENT RESURVEY



True Meridian

Mean magnetic declination
21°34' East



Area resurveyed: 1288.11 Acres

Timber in this area consists of spruce, hemlock, alder, fir and cedar.

NOTE:
SEE 138 GLO FOR
FIELD NOTES OF THIS
SURVEY
ALSO 139 FOR TWP LINES

This plat represents a retracement and reestablishment of a portion of the Willamette Base Line in Range 8 West and a portion of the subdivisional lines of T. 1 S., R. 8 W., Willamette Meridian, Oregon, designed to restore the corners in their true original location according to the best available evidence, and, excepting as new or modified vacant subdivisions are shown hereon, the lottings and areas are as shown on the plat approved January 8, 1884.

The subdivisional lines were surveyed by Henry Meldrum in 1883.

The dependent resurveys were executed by Lynn M. Roseberry, beginning June 3 1958 and completed September 14, 1960, pursuant to special instructions for Group No. 394, Oregon, dated March 14, 1958.

UNITED STATES DEPARTMENT OF THE INTERIOR
BUREAU OF LAND MANAGEMENT
Washington, D.C. April 15, 1963

This plat is strictly conformable to the approved field notes, and the survey, having been correctly executed in accordance with the requirements of law and the regulations of this Bureau, is hereby accepted.

For the Director

Chief, Division of Engineering