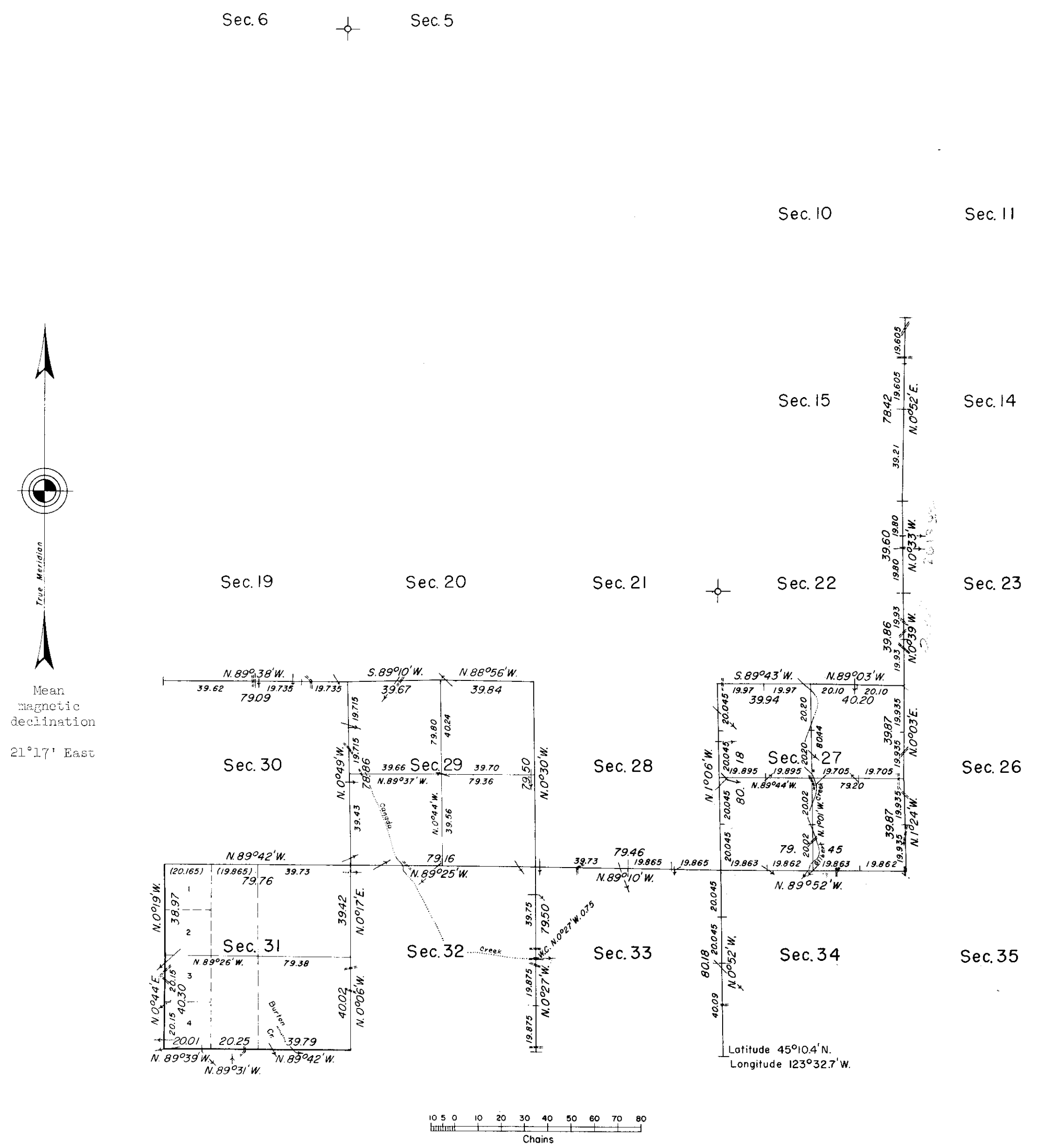


TOWNSHIP 4 SOUTH, RANGE 7 WEST, OF THE WILLAMETTE MERIDIAN, OREGON.

DEPENDENT RESURVEY AND SUBDIVISION



Mean magnetic declination 21°17' East

This plat represents a retracement and reestablishment of a portion of the south and west boundaries and a portion of the subdivisional lines and remonumentation of certain original corner points, T. 4 S., R. 7 W., Willamette Meridian, Oregon, designed to restore the corners in their true original location according to the best available evidence, and subdivision of secs. 27, 29, and 31. Excepting as new or modified vacant subdivisions are shown hereon, the lottings and areas are as shown on the plat approved October 27, 1873.

The south boundary was surveyed in 1854 by Ambrose N. Armstrong and resurveyed in 1873 by Henry Meldrum. The west two miles of the south boundary were resurveyed in 1887 by Hundly S. Maloney.

The west boundary was surveyed in 1873 by Henry Meldrum and resurveyed in 1933 by Otis O. Gould.

The subdivisional lines were surveyed in 1873 by Henry Meldrum.

Dependent resurvey of a portion of the south and west boundaries and a portion of the subdivisional lines, and subdivision of Sections 27, 29, and 31, and remonumentation of certain original corner points executed by Lynn M. Roseberry, under Special Instructions dated May 3 and June 19, 1957, and September 5, 1961, and Supplemental Special Instructions dated September 19, 1961, which provide for the surveys included under Group Nos. 342 and 350, Oregon. Surveys executed May 9, 1960 to April 30, 1962.

UNITED STATES DEPARTMENT OF THE INTERIOR
 BUREAU OF LAND MANAGEMENT
 Washington, D.C. December 3, 1962

This plat is strictly conformable to the approved field notes, and the survey, having been correctly executed in accordance with the requirements of law and the regulations of this Bureau, is hereby accepted.

For the Director

Chief, Division of Engineering

Timber in this area consists of fir, alder, cedar, wild cherry, and maple.

Area resurveyed: 1921.18 Acres
 ✦ Corners remonumented in 1961-62, under Group No. 350.