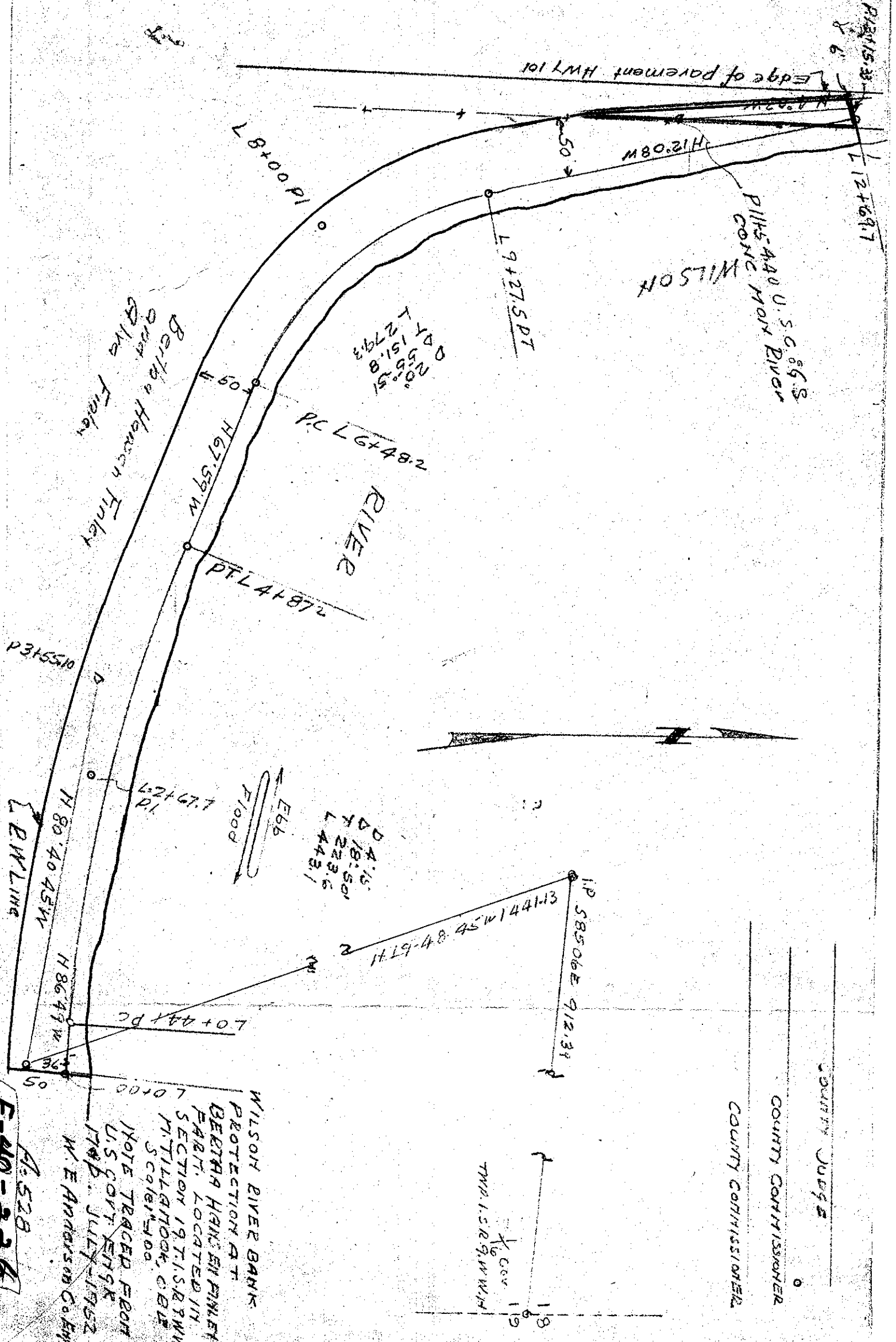


PLAN 153



P115-A40 U.S.C. 66.8  
CONC. HWY RIVER  
WILSON

Bertha Hanson Finley  
part  
of  
Finley

RIVER

E66  
F1000  
D 4.15  
T 18.50  
L 223.5  
L 443.1

WILSON RIVER BANK  
PROTECTION AT:  
BERTHA HANSEN FINLEY  
PART. LOCATED IN  
SECTION 19 T15S R7W  
N. TILLAMOOK, OR.  
Scales 1/400

NOTE TRACED FROM  
U.S. GOVT. ENG'G  
MAP. JULY-1952  
W. E. Anderson Co. Eng.

A.528  
F-410-226

COUNTY JUDGE

COUNTY COMMISSIONER

COUNTY COMMISSIONER

TWP. 15 R. 9. W. 1/4