

Corner of NE 1/4 SW 1/4 Sec 28 West 2547.79 and North from Hub of Section 28. Set 1/2" corner 100' away from Pipe 1 1/2" x 4"

Iron pipe Hub of Sec 28 as set by W. E. Clark from corner in 1900

# BANKS GROVE

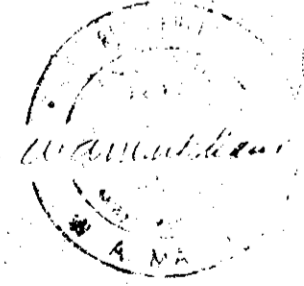
THE NE 1/4 SW 1/4 SEC 28, T3N, R10W.

Survey by Wm. H. Clark  
 Bearings & Distances as shown on plat

SCALE 1" = 100'

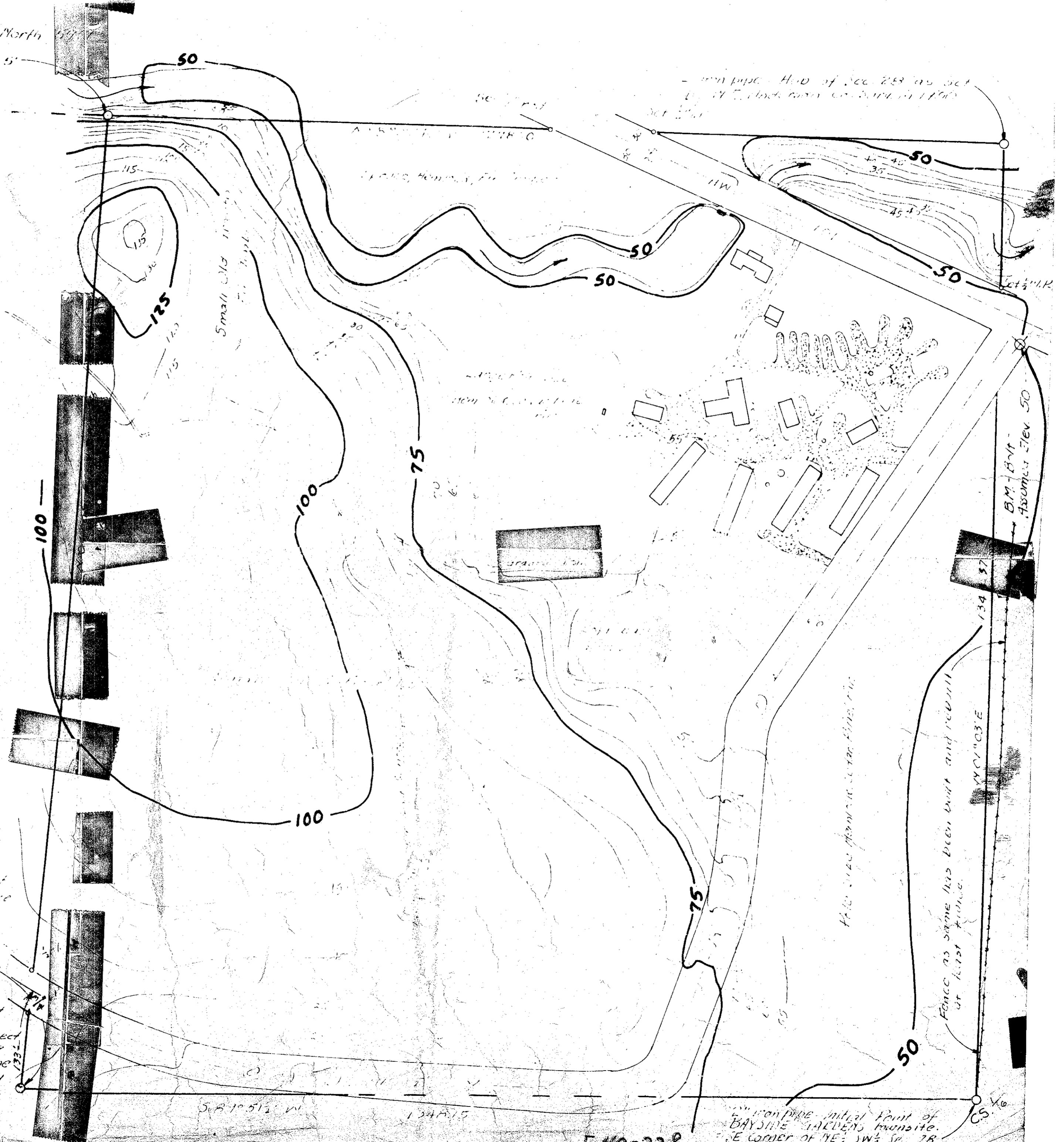
Elevations assumed - 4 M Elev 50 at bolt in pavement at intersection of County Road and Hwy 100

Denotes gravelled area and other spaces.



That the County Surveyors files the same map of parts in Sec 28 T3N, R10W dated May 14, 1872, showing details at that time is a copy of all same of which the distance 1331' survey corner to the land were let out 26.

Set iron pipe 1 1/2" x 4" in position of old corner fence post marking NW corner of cemetery as same has been in place since 1873. By Cemetery Deed this point is to be NW corner of SE 1/4 SW 1/4 Sec 28. It is known that this is NOT the correct position for this 1/2" corner, but due to impossibility of moving the cemetery the position has been preserved and accepted for the SW corner of the NE 1/4 SW 1/4 Sec 28 of BANKS GROVE property.



Fence as same has been built and rebuilt at first finding

Iron pipe initial point of BAYSIDE GARDENS transite. NE corner of NE 1/4 SW 1/4 Sec 28.