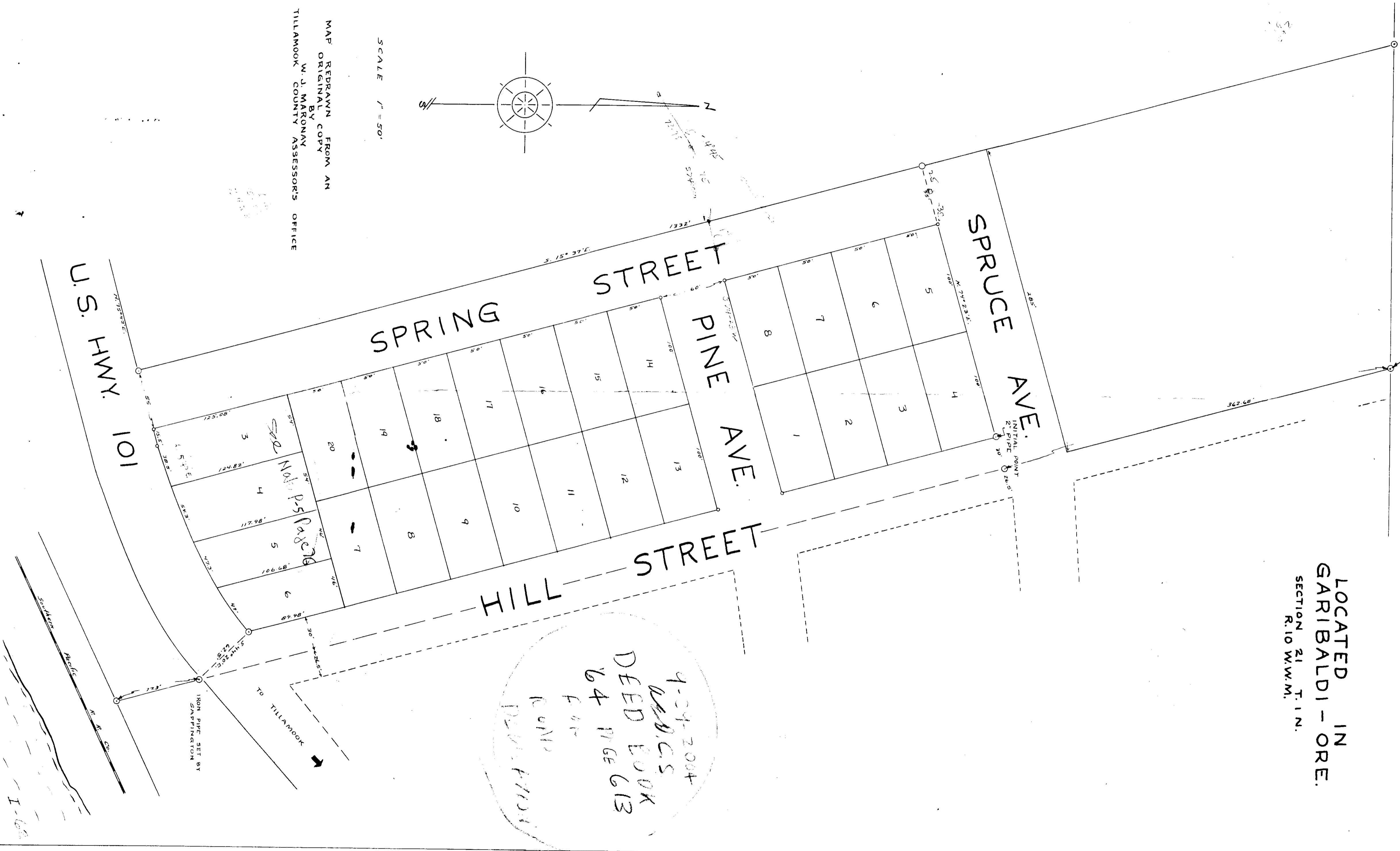


L. M. ALLEY Tracts

IRON PIPE N. 88° 05' W. 423.4' TO CORNER OF LOTS 2 AND 3

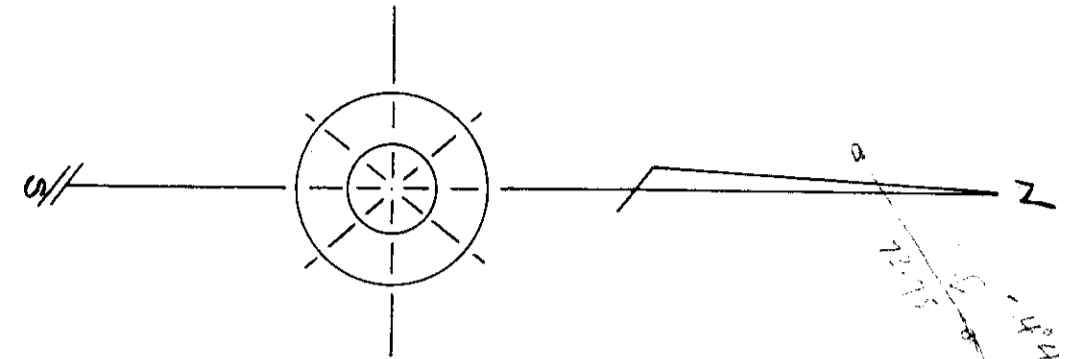
LOCATED IN
GARIBALDI - ORE.
SECTION 21 T. 1 N.
R. 10 W. W. M.

F-40-237



MAP REDRAWN FROM AN ORIGINAL BY W. J. MARONAV, TILLAMOOK COUNTY ASSESSOR'S OFFICE

SCALE 1" = 50'



4-24-2004
W.D.C.S
DEED BOOK
64 PAGE 613
CONP.
RE-APPROX.

IRON PIPE SET BY SANTIAGO

TO TILLAMOOK

U.S. HWY. 101

