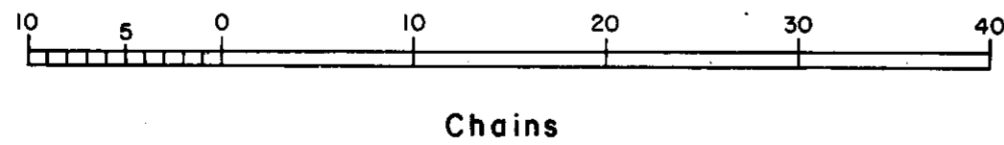
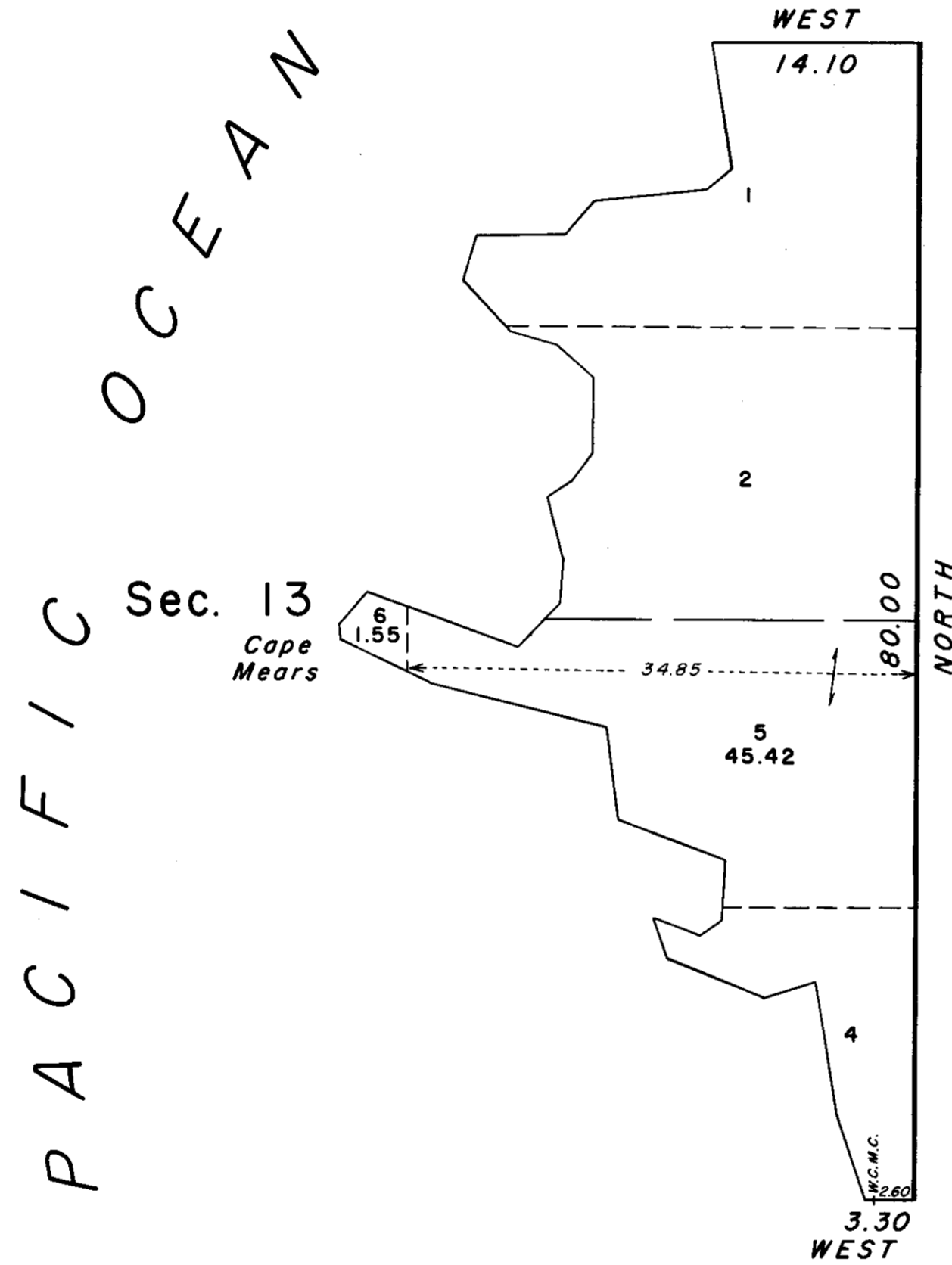


TOWNSHIP 1 SOUTH, RANGE 11 WEST, OF THE WILLAMETTE MERIDIAN, OREGON.
 SUPPLEMENTAL PLAT



This plat, showing amended lottings in section 13, T. 1 S., R. 11 W., Willamette Meridian, Oregon, is based upon the plat approved December 17, 1887.

UNITED STATES DEPARTMENT OF THE INTERIOR
 BUREAU OF LAND MANAGEMENT
 Washington, D. C. July 20, 1967

This plat, showing amended lottings, is based upon the official records, and having been correctly prepared in accordance with the regulations, is hereby accepted.

For the Director

Clark I. Lumm

Acting Chief, Division of Engineering