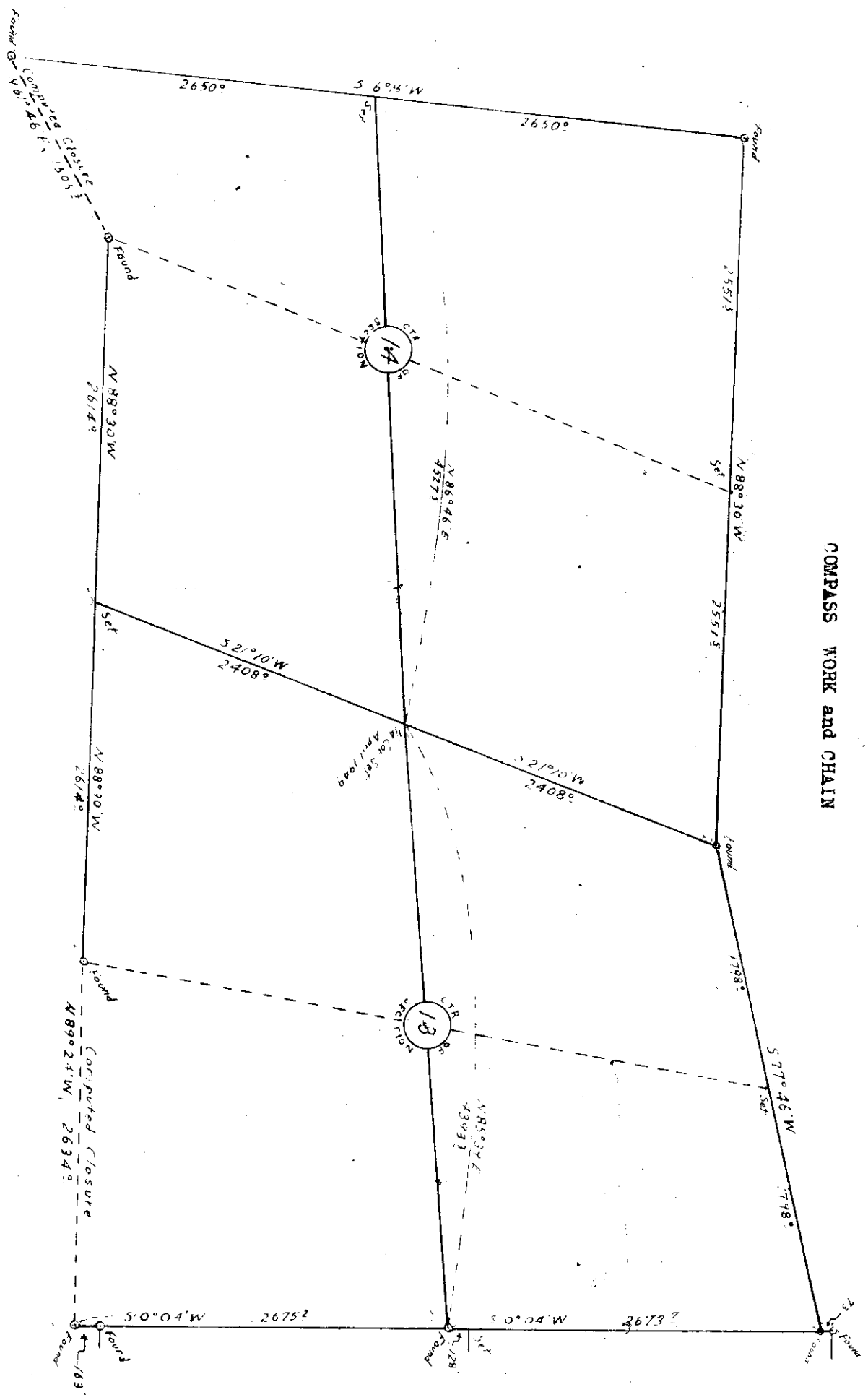


D. F. Brown

MAP SHOWING METHOD OF PARTITIONING OF SECTIONS 13 and 14, T 1 N; R 7 W; W. 1/4. TILLAMOOK COUNTY, OREGON  
Based on work done and corners found by Consolidated Timber Company Engineers, November and December, 1940  
Scale 1 inch = 1000 feet  
April 20, 1949

NORTH  
RUN ON VAR. OF 23°45' E



COMPASS WORK and CHAIN

F-40-251

F-40-257