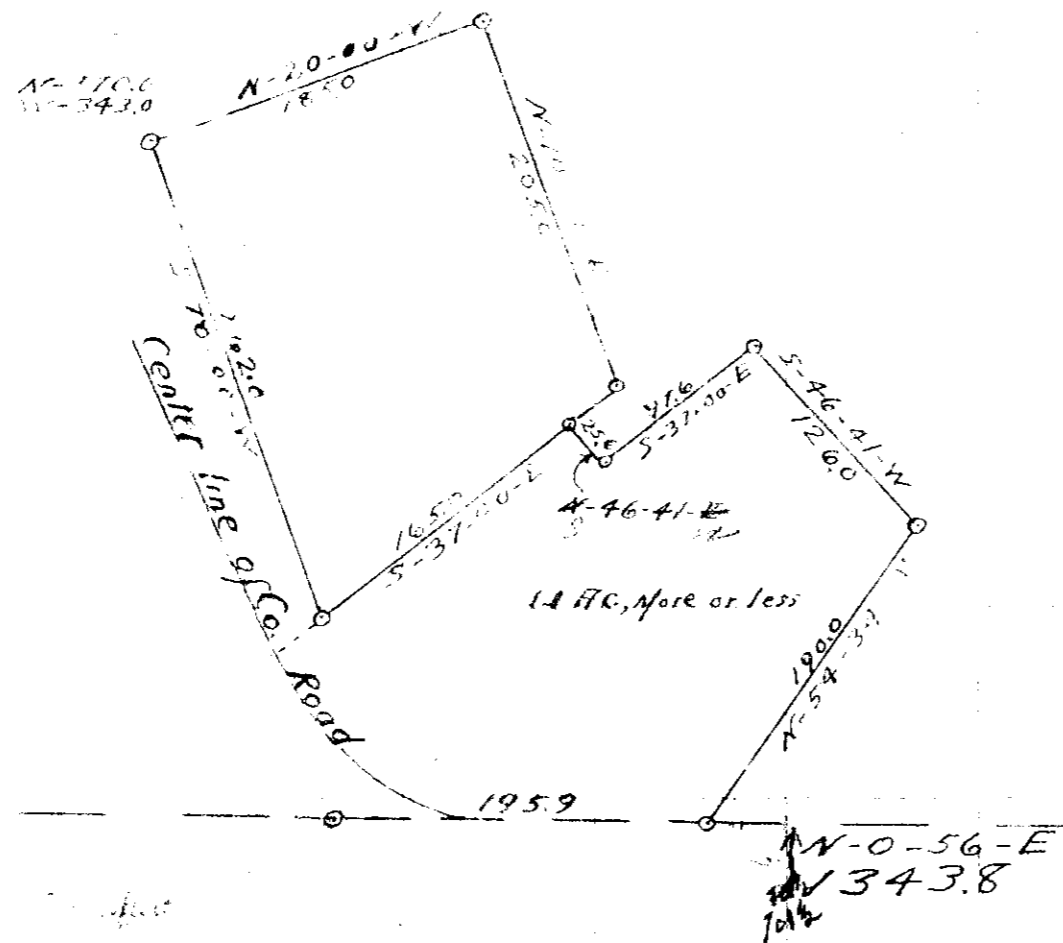


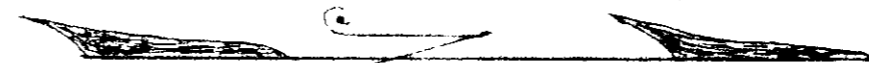
95 48-5

20 0 21  
29 0 28



MAP SHOWING  
 A parcel of Joe Chatlain lands  
 lying in N.E. 1/4 of N.E. 1/4 of  
 Sec. 20, Twp. 3, South of range  
 10, W.W.M., Tillamook Co., Ore

17 24 - Bapack  
 Reg. 1st Ser.



Scale: 1 inch = 100 feet.

This map is copied from  
 the original obtained (or returned)  
 to Joe Chatlain on Feb 1970

OKair es.

Bobcock  
 Prop.

Section line = Center line of Co. road

1/16 Cor.

F-40-257