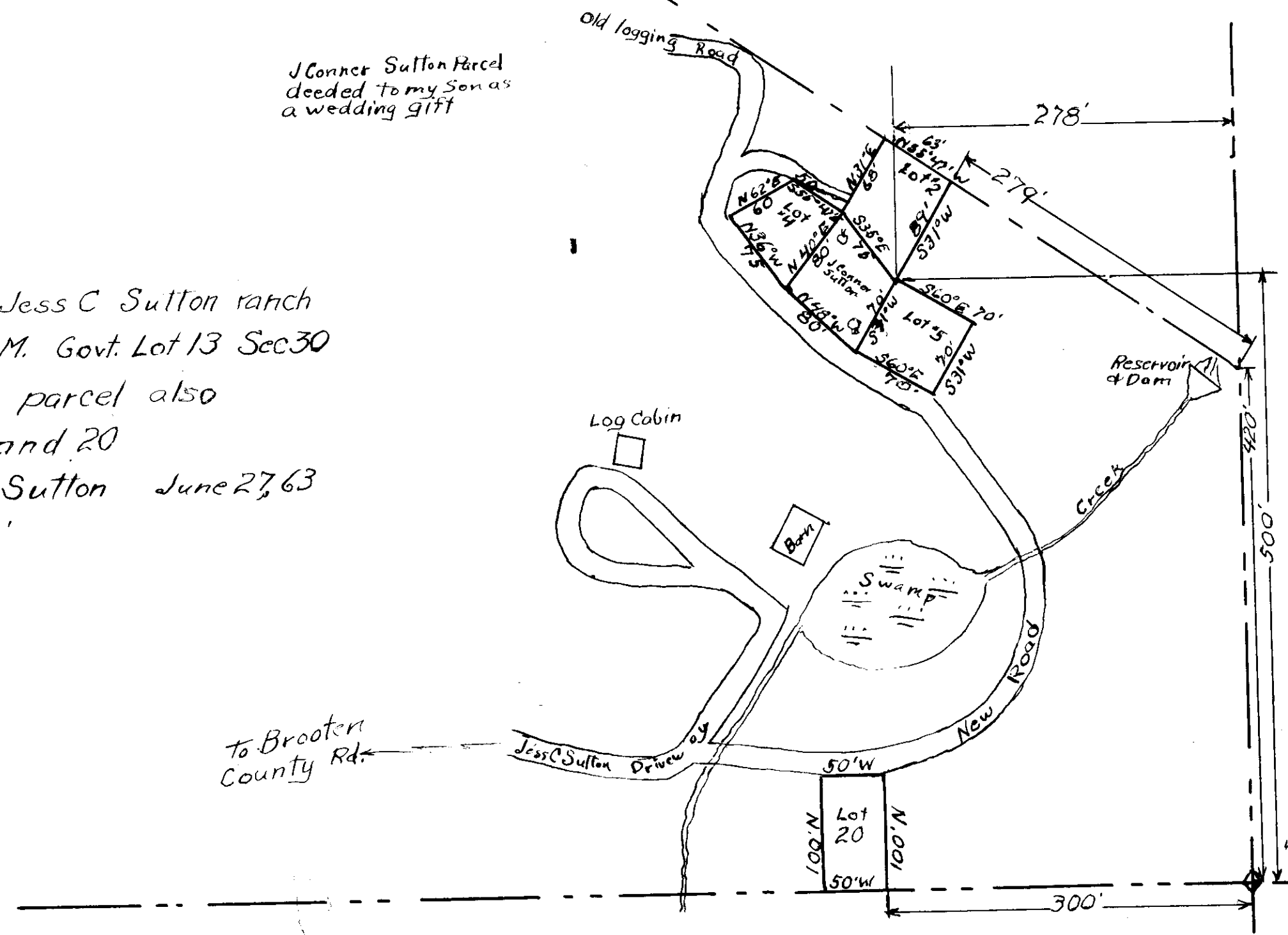


Oregon Pulp and  
Timber Co.  
Property line N55°47'W  
Jess C Sutton

J Connor Sutton Parcel  
deeded to my son as  
a wedding gift

Lot Divisions Jess C Sutton ranch  
Twn. 4S R10W W.M. Govt. Lot 13 Sec 30  
J. Connor Sutton parcel also  
Lots 2, 4, 5, and 20  
Drawn by Jess C Sutton June 27, 63  
Scale 1" = 100'



SE. Cor. Sec #30  
Twn 4S Range 10W W.M.  
also SE Cor Govt Lot 13

F-40-260

F-40-260