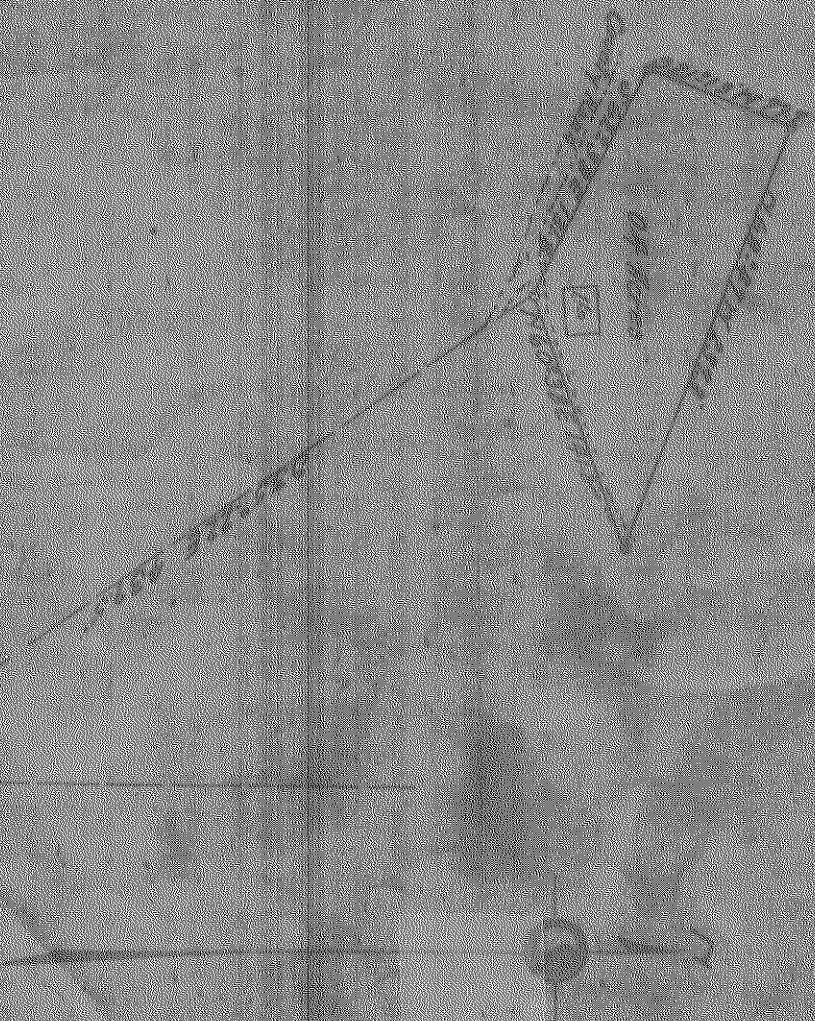
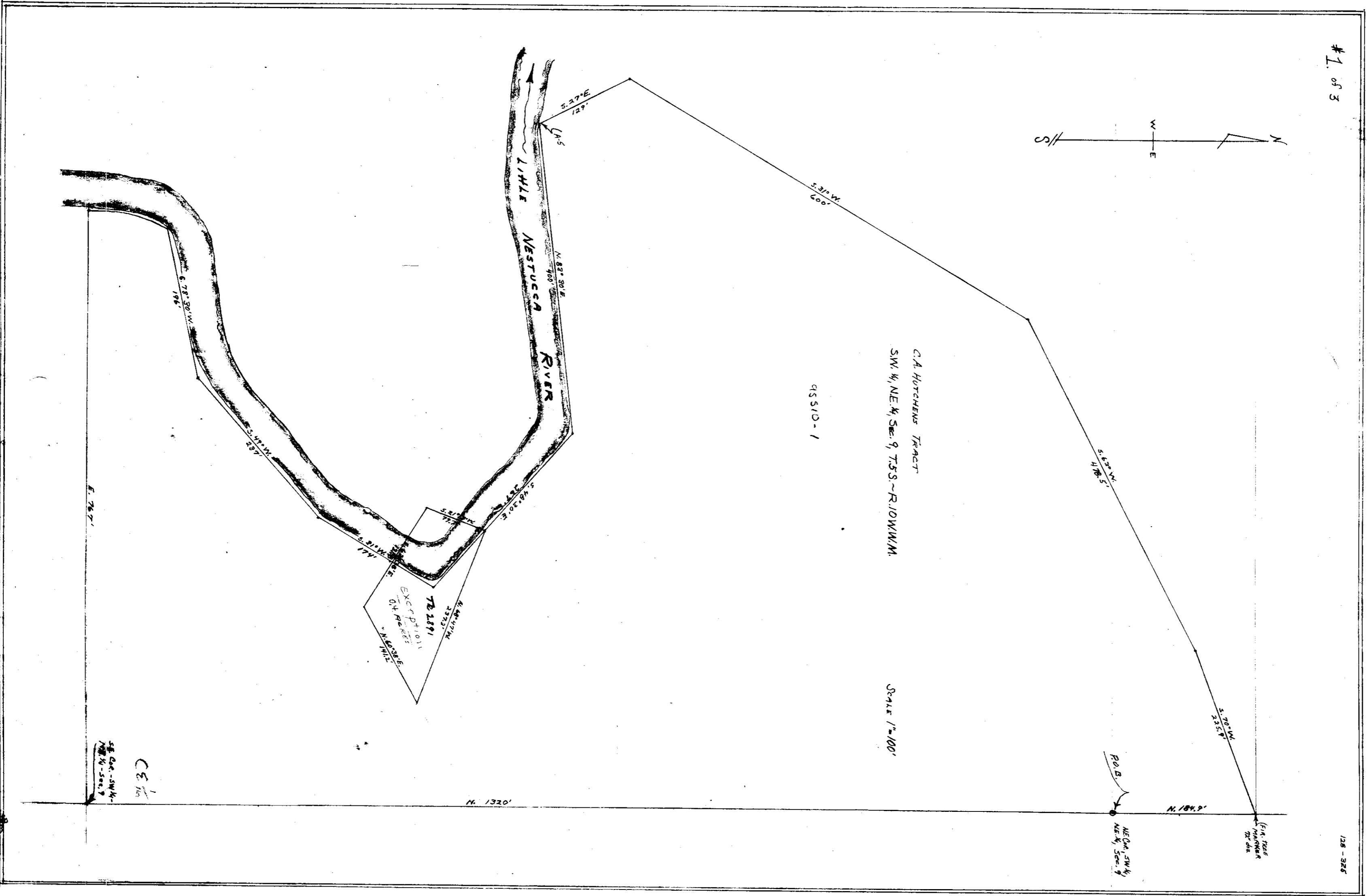


MMP & SURVEY
FOR
FILLING POND
DATE 5/20/00
PREPARED BY J. J. JONES
SCALE 1" = 100'

SEE COMPUTATIONS ATTACHED OF 5/20/00



F-40-266



Handwritten note: "Return to H. Johnson"

1188-335

128-325

POB. NE 1/4 SW 1/4 NE 1/4 Sec 9

FIN. TREE MARKER 20' dia

N. 184.0'

S. 70° W. 235.8'

S. 65° W. 511.85'

C.A. HITCHENS TRACT
SW 1/4, NE 1/4, Sec 9, T35S ~ R10W/M/M

SCALE 1" = 100'

9S 10D - 1

S. 30° W. 1009'

LITTLE NEVERSCA RIVER

EXCEPTION
7B 1891
Q4 R2 S2
N. 60° W. 117.0'
S. 82° 30' E. 100.0'

N. 1320'

S. 78° 30' W. 198.0'

S. 54° 10' W. 282.0'

E. 76.0'

CE 1/4 SW 1/4 NE 1/4 Sec 9