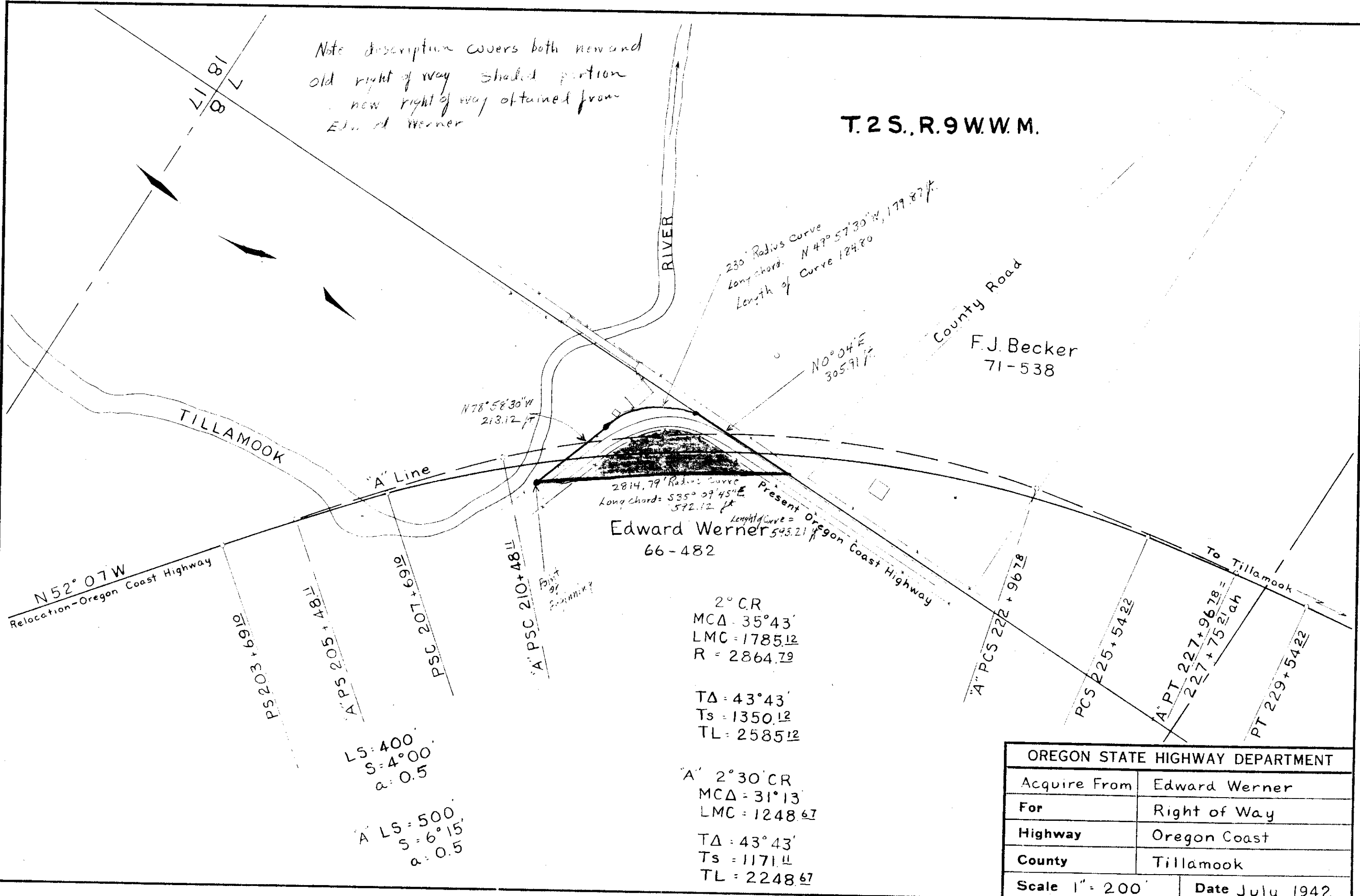


Note description covers both new and old right of way Shaded portion new right of way obtained from Edward Werner

T. 2 S., R. 9 W. W. M.



OREGON STATE HIGHWAY DEPARTMENT	
Acquire From	Edward Werner
For	Right of Way
Highway	Oregon Coast
County	Tillamook
Scale 1" = 200'	Date July 1942

See 8424 F-40-280