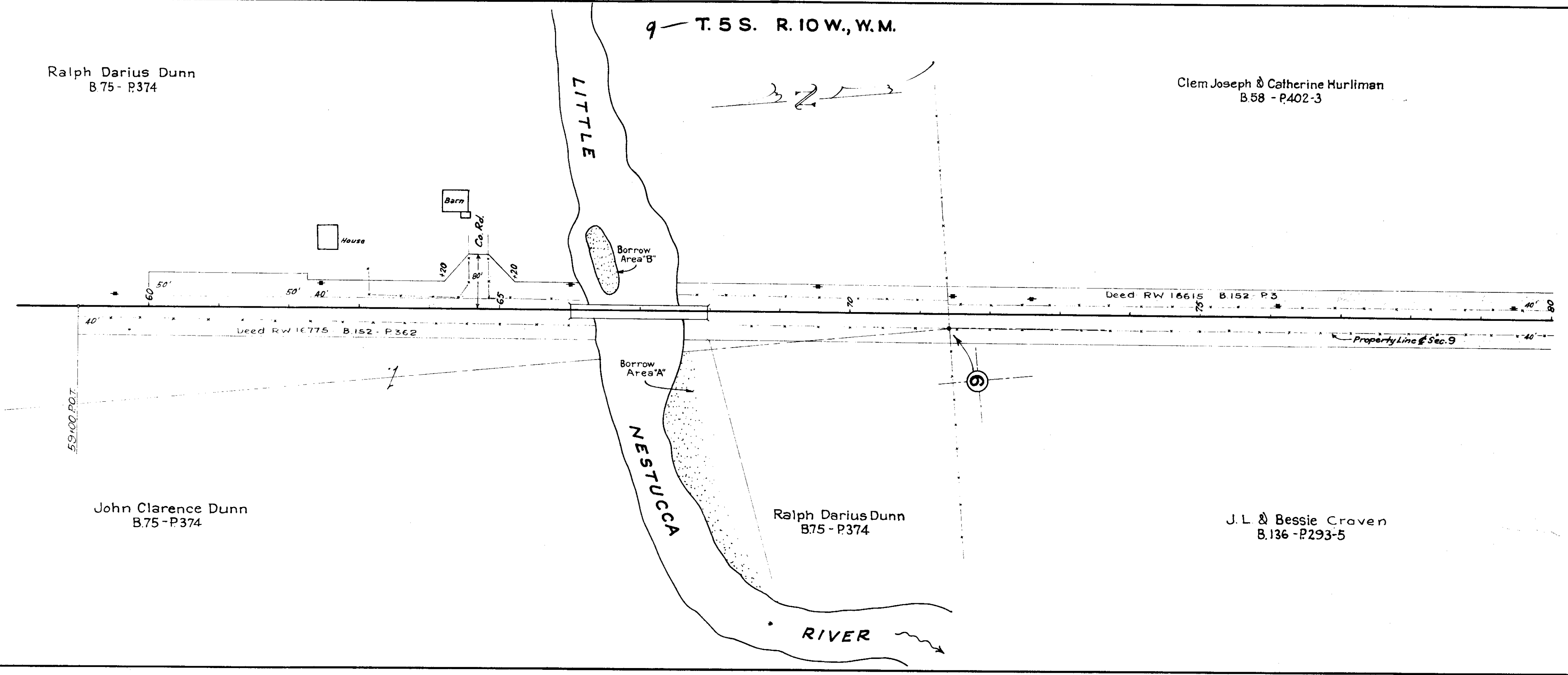


10C-se-4

10C-se-4

OREGON STATE HIGHWAY DEPARTMENT
 Located Line
MEDA BRIDGE SECTION
 LITTLE NESTUCCA HWY.
 Tillamook Co.
 Scale 1"=100 slc Oct. 1955



VERN L. LARSON, REGISTRAR
 JUL 23 1955

9-5-S.10.
 F-40-282