

SURVEYOR'S CERTIFICATE

I, W.E. Anderson, County Surveyor of Tillamook County, do hereby certify that this map was made from notes taken during an actual survey made by me in February 1931, and that it is a correct subdivision and said subdivision was made as directed by the board of Viewers. I also set 2" iron pipes at all corners of small subdivisions.

W.E. Anderson
County Surveyor

VIEWERS' CERTIFICATE

We the undersigned board of Viewers of the Sarah Daniels Estate do hereby certify that the above County Surveyor has subdivided the Sarah Daniels Estate as directed by us and as shown on the accompanying plat.

John Nagels
Viewer and appraiser

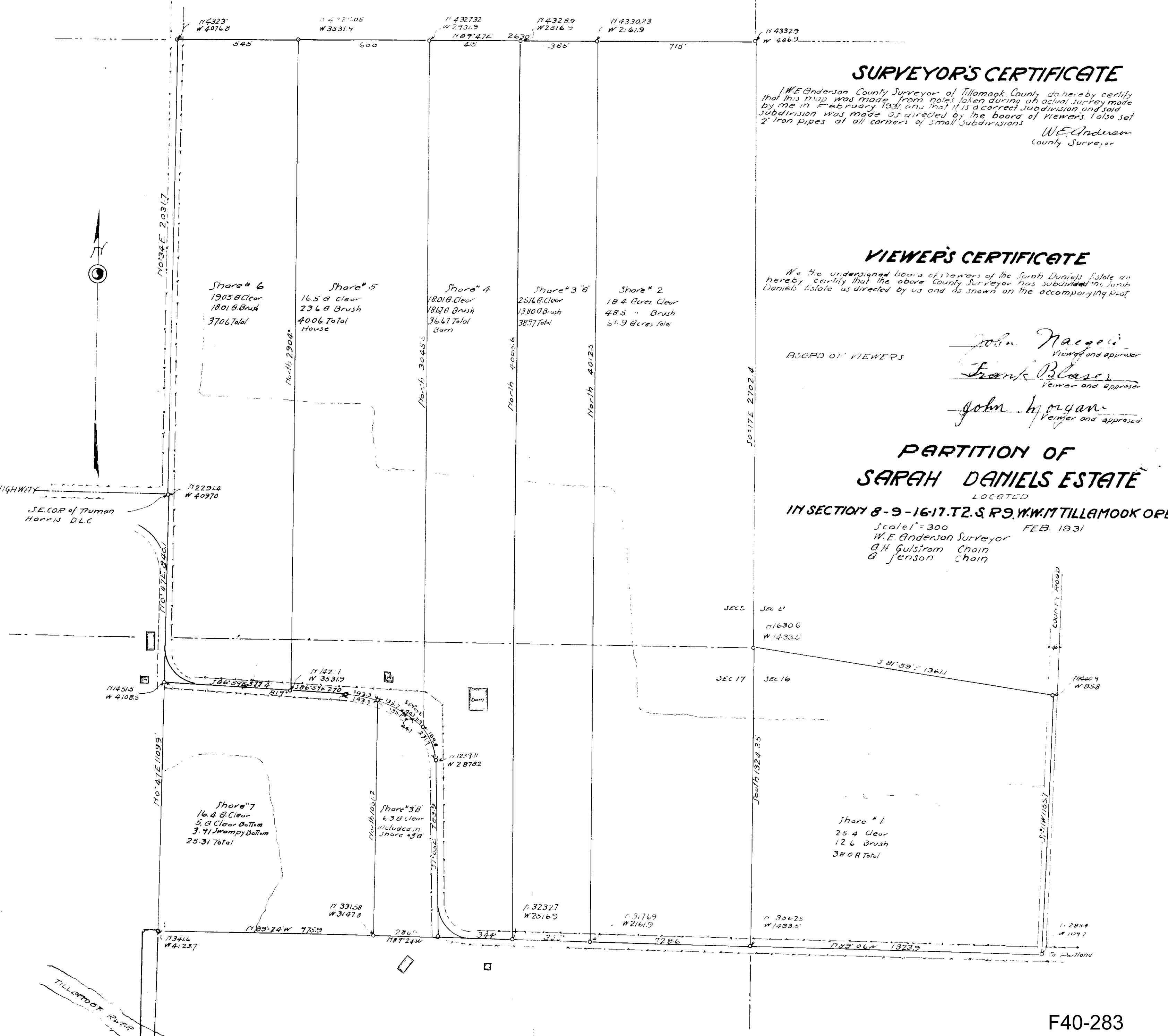
Frank Blaser
Viewer and appraiser

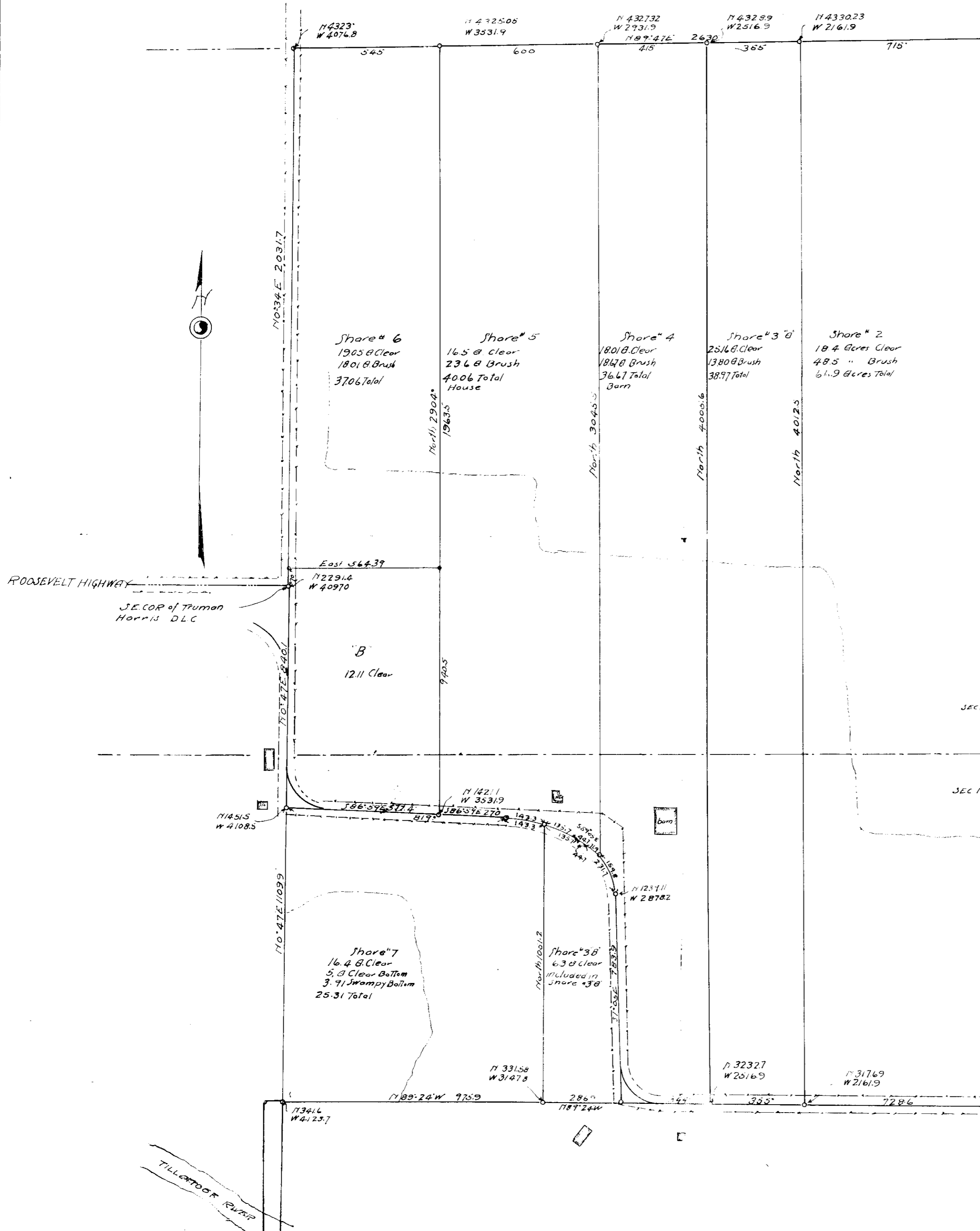
John Morgan
Viewer and appraiser

BOARD OF VIEWERS

PARTITION OF SARAH DANIELS ESTATE

LOCATED
IN SECTION 8-9-16-17, T.2.S. R.9. W.W.M. TILLAMOOK CO. ORE
Scale 1" = 300 FEB. 1931
W.E. Anderson Surveyor
A.H. Gulstrom Chain
G. Jensen Chain





SURVEYOR'S CERTIFICATE

I, W.E. Anderson, County Surveyor of Tillamook County, do hereby certify that this map was made from notes taken during an actual survey made by me in February 1931, and that it is a correct subdivision and that subdivision was made as directed by the board of viewers. I also set 2" iron pipes at all corners of small subdivisions.

W.E. Anderson
County Surveyor

VIEWERS' CERTIFICATE

We, the undersigned board of viewers of the Beverly R. Daniel Estate do hereby certify that the above County Surveyor has subdivided the Beverly R. Daniel Estate as directed by us and as shown on the accompanying plat.

John Nagels
Viewer and appraiser

Frank Blaser
Viewer and appraiser

John Morgan
Viewer and appraiser

PARTITION OF BEVERLY R DANIEL ESTATE

LOCATED IN SECTION - 8 - 16-17, T. 2. S. R. 9. W. W. TILLAMOOK ORE

Scale 1" = 300 FEB 1931

W.E. Anderson Surveyor
A.H. Gulstrom Chain
A. Jensen Chain

SEC 8	Sec 9					
1716306	1714335					
22718	2341	S 81° 59' E 136.11				
		277.8	302.9			
SEC 17	SEC 16					
A	B	C	D	E		
522 Clear	5.30 Clear	5.00 Clear	4.84 Clear	4.85 Clear	316.9	
188 brush	1.31 brush	2.94 brush	3.3	3.30	1740.9	
677.4	6.61	7.94 Total	8.34 Tol	8.15 Total	1740.9	
North 1296.6	1267.00	North 1232.6	North 1194.84	North 1157	North 1109.7	
Shore # 1						
26.4 Clear						
12.6 Brush						
39.0 Total						
1730625	1731769	1731769	1732225	1732225	1732225	
W/4335	W/2161.9	W/2161.9	W/4335	W/4335	W/1097	