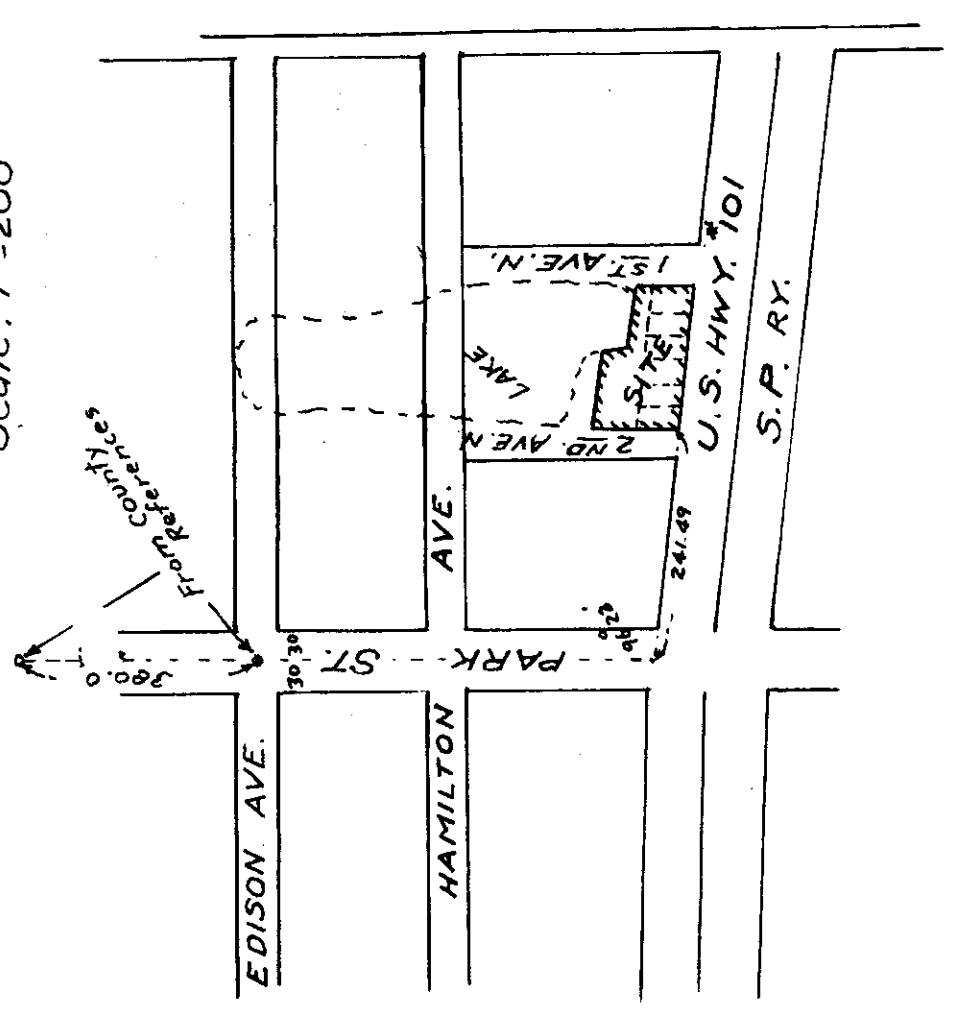


LOCATION MAP
Scale: 1"=200'



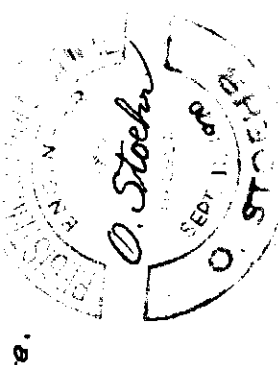
NOTES

Site is in City of Rockaway and is in a Commercial Zone and in the Fire District. Construction must comply with Uniform Bldg. Code. Clearances were run from Highway Bench Mark - a brass nail, 1990, well head of Culvert, under highway, made July, 1962, (see notes on plat for details). Soil is sandy loam and should support 2 tons per sq. ft.

SURVEY OF PART OF BLOCK 17
"SEA VIEW PARK", ROCKAWAY, ORE.

Legal Description: -Beginning at a point in the north line of Lot 29 in Blk. 17 in the recorded plat of Sea View Park in Rockaway, Tillamook County, Oregon, which point bears N 89°02' W 44.81 ft. from the N.E. cor. of said Lot 29 and is at the intersection of the east line of U.S. Hwy. 101 and the south line of 2nd Ave. N.; thence S. 72°0' W. along the east line of U.S. Hwy. 101, 150.93 ft. to the south line of Lot 54 in said block 17, thence S. 89°02' E. along the north line of said Lot 54, and the north line of 2nd Ave. N. 31.5 ft. to the south line of said Lot 54, thence N. 81°54' E. 31.5 ft. to the south line of 2nd Ave. N.; thence N. 89°02' E. 83.0 ft. to the south line of 2nd Ave. N. 90.56 ft. to the point of beginning.

O. Stoehr
7019 S.E. Morrison St., Portland, Ore.



STANDARD OIL COMPANY OF CALIFORNIA
SURVEY OF
SERVICE STATION 1-6487
U.S. HWY. 101 - 1st AVE. TO 2nd AVE. N.
ROCKAWAY, ORE.
Feb. 5, 1962.
Scale: 1"=10'
32-3-N-170
F-40-295

