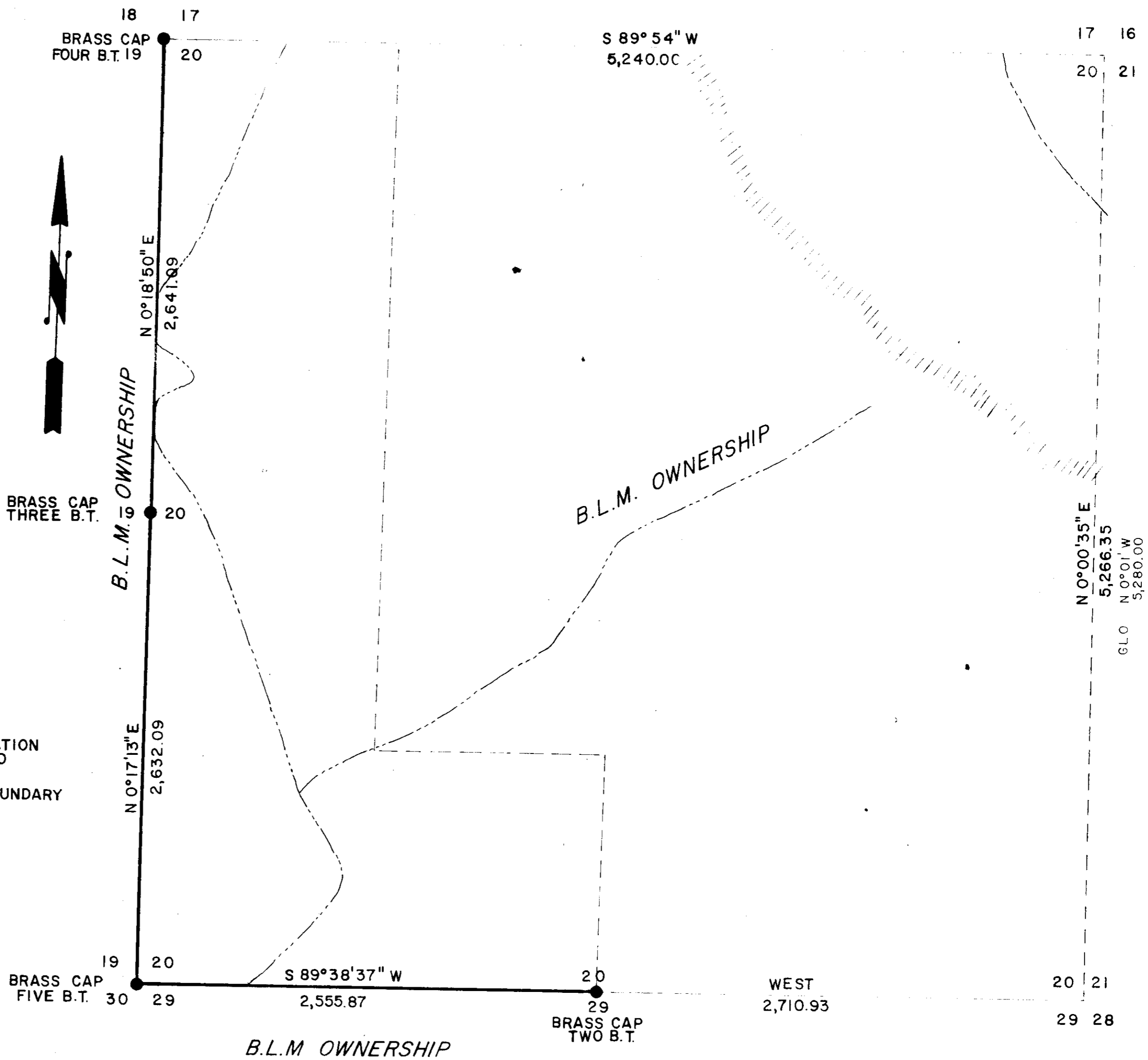


NOTES

1. COORDINATES OF N W SECTION CORNER
 N 15,253.387
 E 8,108.252
- COORDINATES OF SOUTH 1/4 CORNER
 N 9,996.183
 E 10,636.425
2. BEARING OF SURVEY FROM SOLAR OBSERVATION
 TAKEN BETWEEN S.W. SECTION CORNER AND
 SOUTH 1/4 CORNER ON JANUARY 27, 1975
3. HEAVY LINES WERE POSTED WITH BLM BOUNDARY
 TAGS EVERY 150'



LEGEND:

- DENOTES MONUMENTS FOUND
- DENOTES MONUMENTS SET
- ===== DENOTES ROAD
- DENOTES RIVER
- ////// DENOTES RIDGE
- LINE SURVEYED & POSTED
- LINE SURVEYED
- FROM GLO NOTES 1684
- PROJECTED

SURVEY PLAT		
SECTION 20, T 3 S, R 7 W, W.M. TILLAMOOK COUNTY, OREGON		
FOR THE BUREAU OF LAND MANAGEMENT SALEM DISTRICT		
SURVEYED BY FEDERAL HIGHWAY ADMINISTRATION VANCOUVER, WASHINGTON		
PROJECT ENGR L.W. BARBER		
DRAWN BY	Eugene Van Cauteren	SCALE 1"=500'
		3-14-75