

TOWNSHIP 1 SOUTH, RANGE 8 WEST, OF THE WILLAMETTE MERIDIAN, OREGON.
DEPENDENT RESURVEY

This plat represents a dependent resurvey of a portion of the south and west boundaries, and a portion of the subdivisional lines, T. 1 S., R. 8 W., Willamette Meridian, Oregon, designed to restore the corners in their true original locations according to the best available evidence.

Except as shown hereon, the lottings and areas are as shown on the plats approved January 8, 1884, and September 24, 1895, and the plat accepted April 15, 1963.

The west boundary and a portion of the subdivisional lines were surveyed by Henry Meldrum, in 1883.

A portion of the west boundary of the township was retraced by Henry Meldrum, in 1884.

A portion of the west boundary and subdivisional lines of the township was resurveyed by Lynn M. Roseberry, in 1958-60.

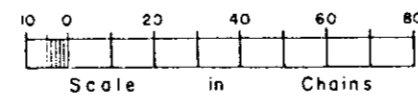
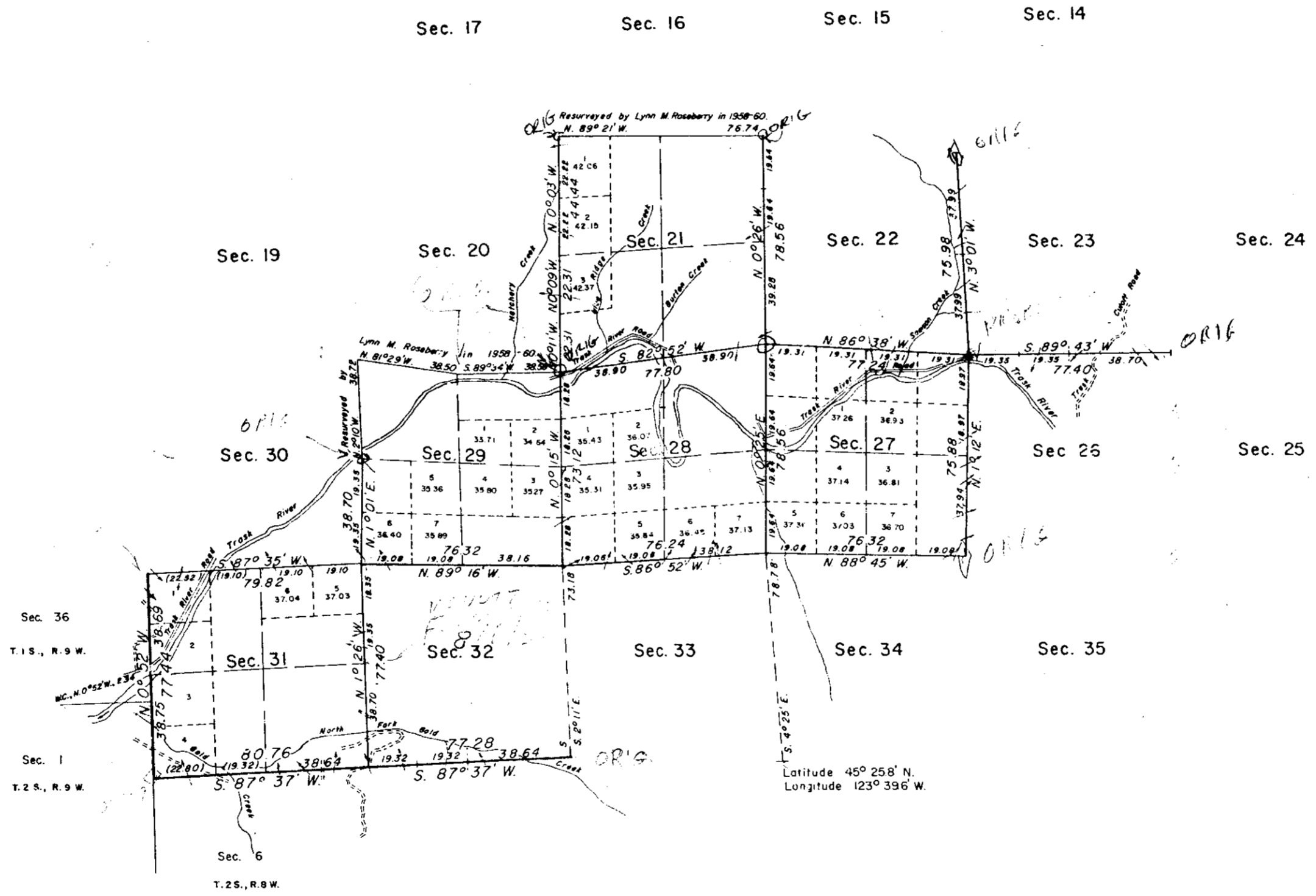
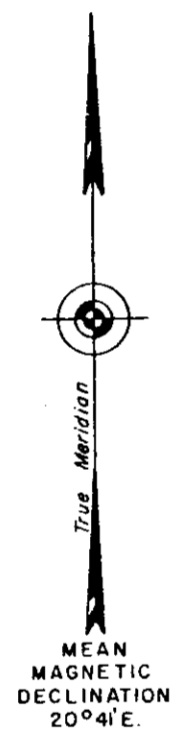
The resurvey was executed by Lester E. Fischer, Cadastral Surveyor, from March 31, 1975 to July 1, 1976, under Special Instructions dated February 13, 1974, and Supplemental Special Instructions dated March 24, 1975, which provide for the surveys included under Group No. 832, Oregon.

UNITED STATES DEPARTMENT OF THE INTERIOR
BUREAU OF LAND MANAGEMENT
Washington, D.C. June 26, 1978

This plat is strictly conformable to the approved field notes, and the survey, having been correctly executed in accordance with the requirements of law and the regulations of this Bureau, is hereby accepted.

For the Director

Bernard W. Fisher
Chief, Division of Cadastral Survey



"SUSPENDED, October 9, 1985, see File 9622.1(942)"

Timber in this area consists of hemlock, spruce, alder, fir, cedar, and maple.

