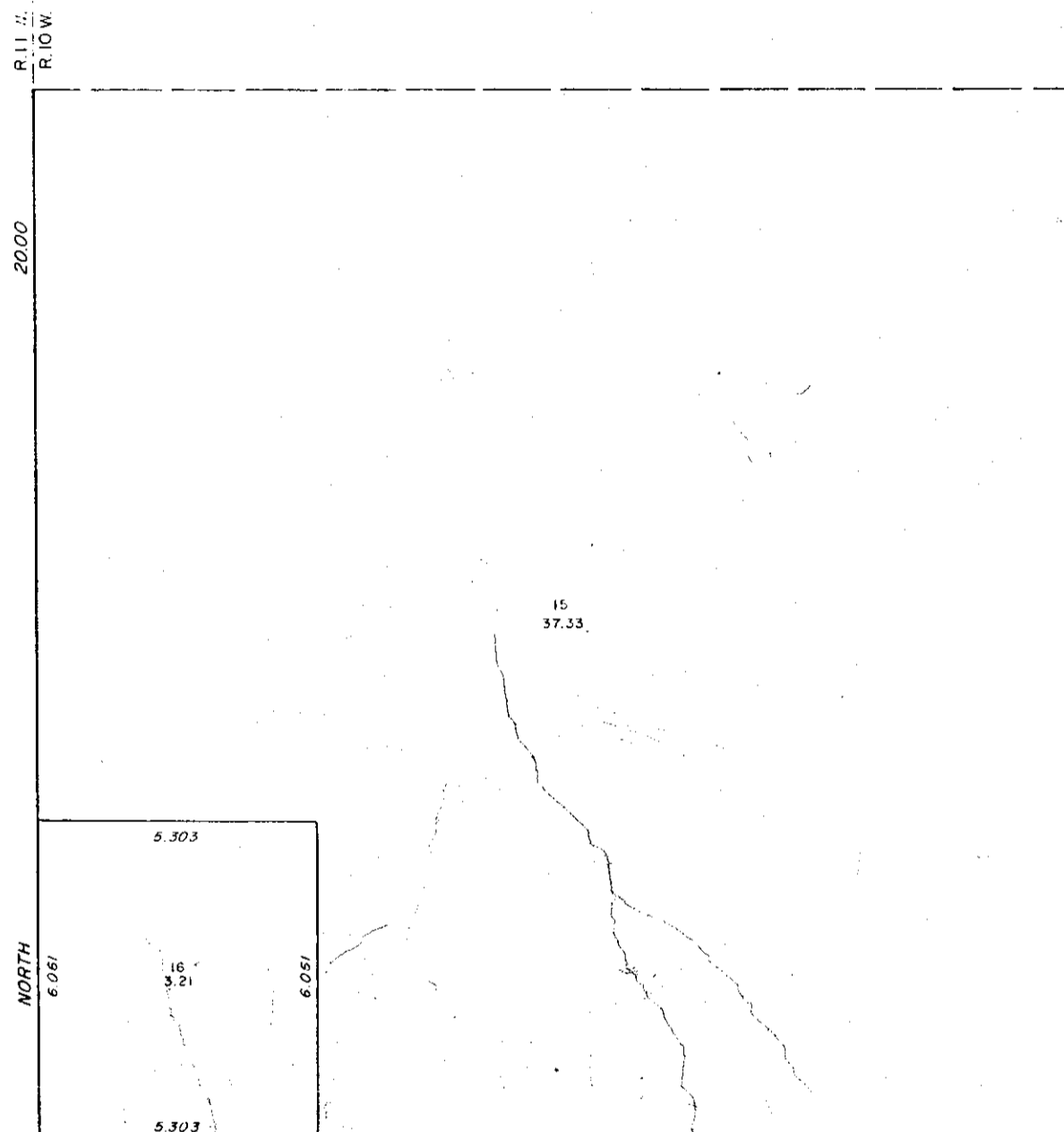
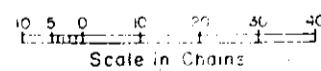
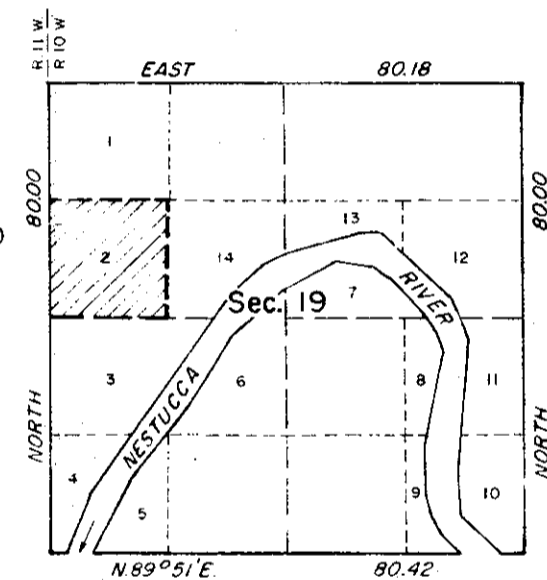


TOWNSHIP 4 SOUTH, RANGE 10 WEST, OF THE WILLAMETTE MERIDIAN, OREGON.

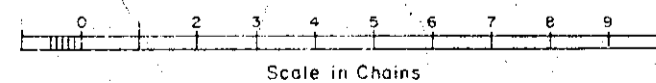
SUPPLEMENTAL PLAT



SEE ENLARGED DIAGRAM



ENLARGED DIAGRAM



This plat showing amended lottings in section 19, T. 4 S., R. 10 W., Willamette Meridian, Oregon, is based upon the official plat of survey approved October 4, 1879, and the private survey plat (A-3464) of a portion of the SW $\frac{1}{4}$ of section 19 officially filed in the Tillamook County Courthouse.

UNITED STATES DEPARTMENT OF THE INTERIOR
BUREAU OF LAND MANAGEMENT
Denver, Colorado December 4, 1979

This plat, showing amended lottings, is based upon the official records and a private survey plat, and having been correctly prepared in accordance with the regulations, is hereby accepted.

For the Director

Chief, Cadastral Survey
Examination & Approval Staff