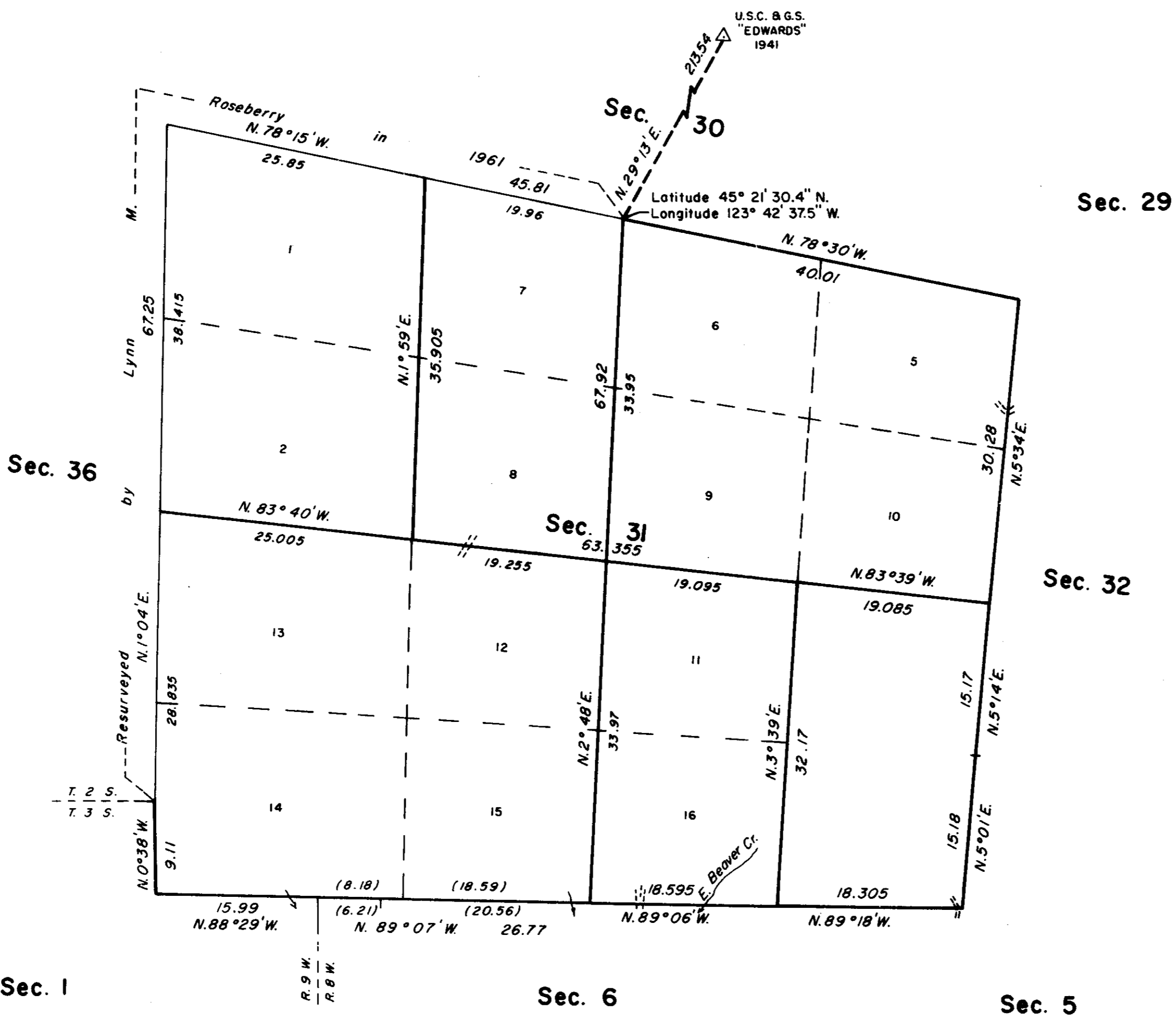


TOWNSHIP 2 SOUTH, RANGE 8 WEST, OF THE WILLAMETTE MERIDIAN, OREGON

DEPENDENT RESURVEY AND SUBDIVISION OF SECTION 31

Sec. 25



FOR FIELD NOTES SEE C. S. FIELD NOTE BIN S. 31 2 S. 8

The history of surveys is contained in the field notes.

This plat represents a dependent resurvey of a portion of the south and west boundaries and subdivisional lines, T. 2 S., R. 8 W., Willamette Meridian, Oregon, designed to restore the corners in their true original locations according to the best available evidence, and the subdivision of section 31.

The lottings and areas are as shown on the plats approved January 8, 1884, and accepted April 9, 1963.

The survey was executed by Stephen D. Hardin, Cadastral Surveyor, beginning September 28, 1983, and completed October 31, 1983, pursuant to Special Instructions dated August 15, 1983, under Group Number 1176, Oregon.

Timber in this area consists of hemlock, cedar, fir, spruce, alder, and maple.

UNITED STATES DEPARTMENT OF THE INTERIOR
BUREAU OF LAND MANAGEMENT
Portland, Oregon May 16, 1986

This plat is strictly conformable to the approved field notes, and the survey, having been correctly executed in accordance with the requirements of law and the regulations of this Bureau, is hereby accepted.

For the Director

William W. Glenn

Chief Cadastral Surveyor of Oregon