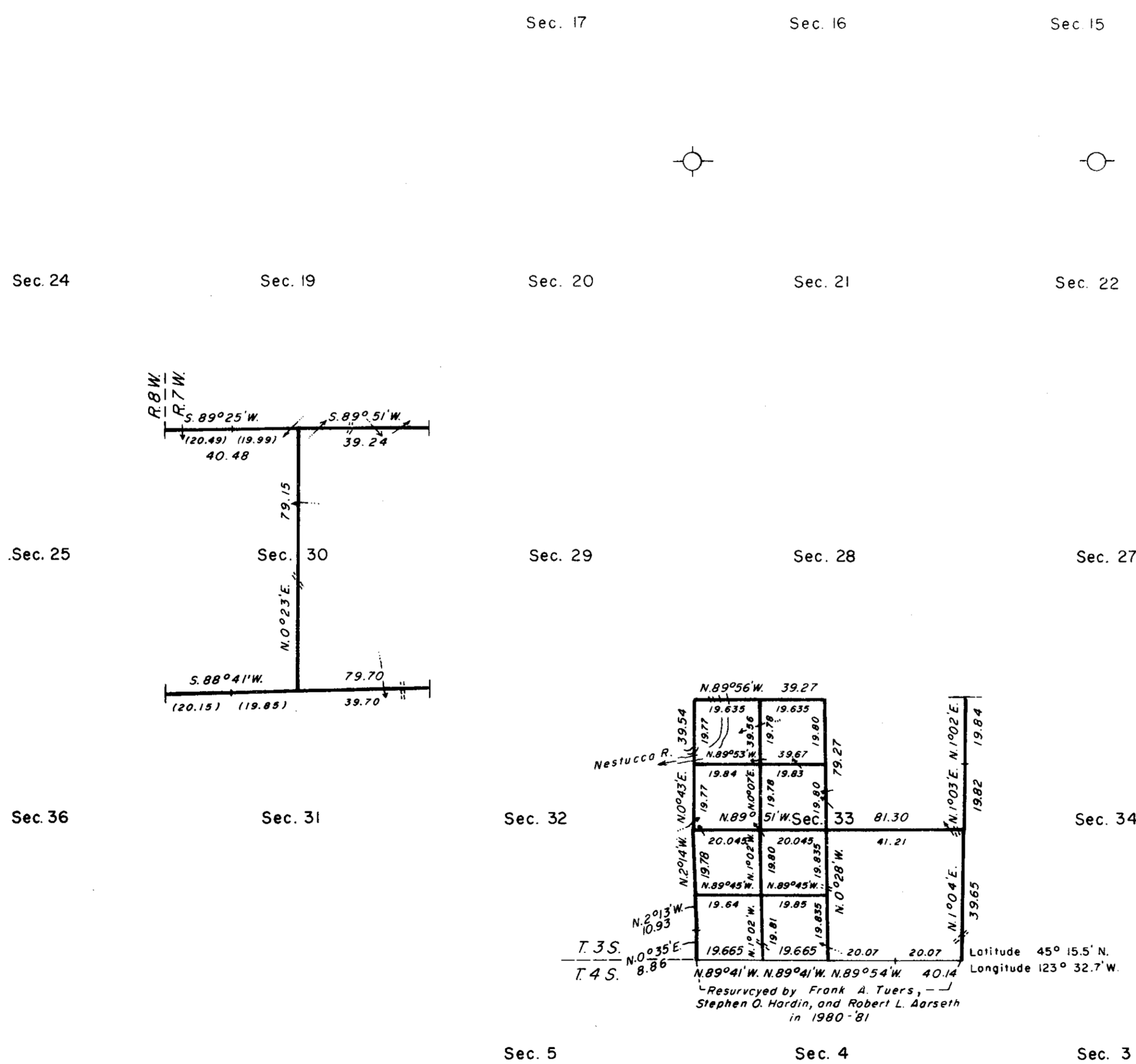
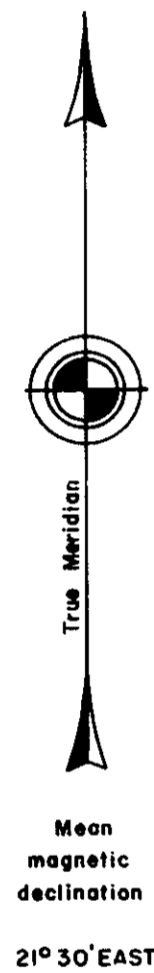


TOWNSHIP 3 SOUTH, RANGE 7 WEST, OF THE WILLAMETTE MERIDIAN, OREGON

DEPENDENT RESURVEY, SUBDIVISION OF SECTIONS, AND REMONUMENTATION



FOR FIELD NOTES SEE C.S. NOTE B/W 5.33 357

The history of surveys is contained in the field notes.

This plat represents a dependent resurvey of a portion of the subdivisional lines and the remonumentation of certain original corner points, T. 3 S., R. 7 W., Willamette Meridian, Oregon, designed to restore the corners in their true original locations according to the best available evidence, and the subdivision of sections 30 and 33.

The lottings and areas are as shown on the plats approved October 27, 1873, and November 8, 1885.

The survey was executed by Frank A. Tuers and Stephen O. Hardin, Cadastral Surveyors, beginning February 6, 1978, and completed May 24, 1984, pursuant to Special Instructions dated May 3, 1957, and January 6, 1984, under Group Number 350 and 1194, Oregon.

Timber in this area consists of fir, hemlock, cedar, spruce, alder, and maple.

UNITED STATES DEPARTMENT OF THE INTERIOR
BUREAU OF LAND MANAGEMENT
Portland, Oregon June 5, 1987

This plat is strictly conformable to the approved field notes, and the survey, having been correctly executed in accordance with the requirements of law and the regulations of this Bureau, is hereby accepted.

For the Director

William W. Glenn
Chief Cadastral Surveyor of Oregon

