

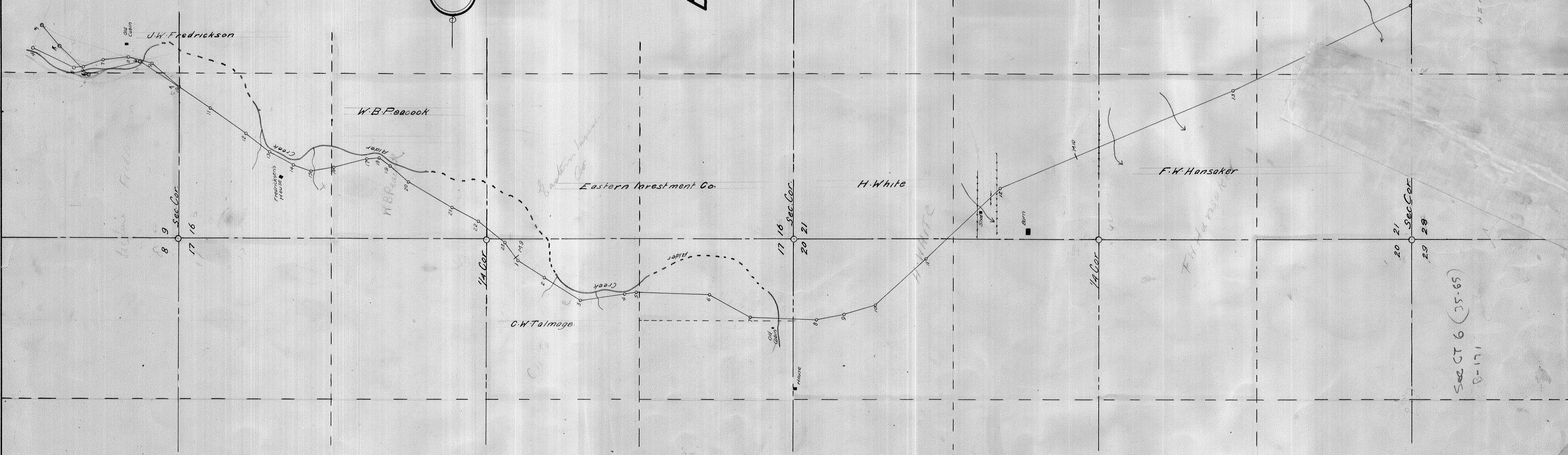
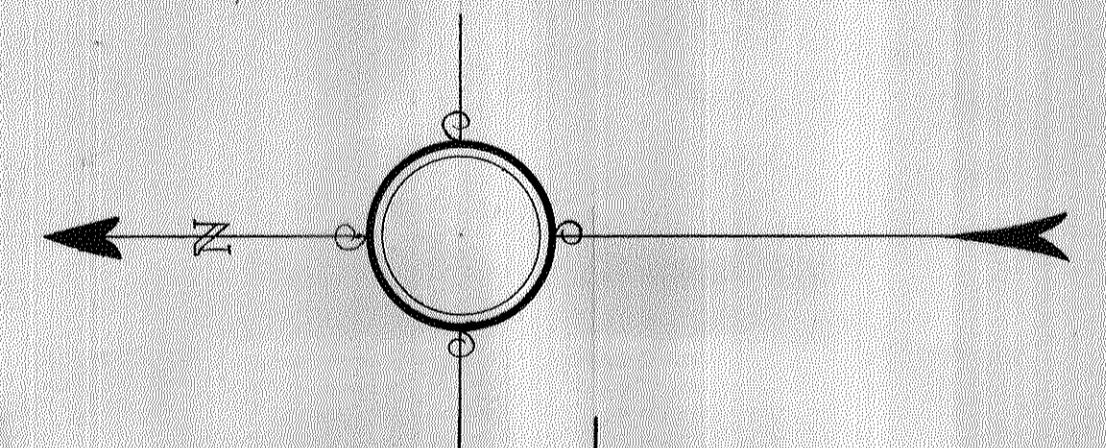
MAP OF
E.E. CROSS COUNTY ROAD

ALONG THREE RIVERS
SECTIONS 9, 16, 17, 20, 21, 55, 9W
TILLAMOOK COUNTY
U.G. Jackson Co. Surv. Dec. 1911
Scale 1"=400'

SHEET No. 4 OF 4

Station	Angle	Course	Station	Angle	Course
442.149.0	32° 54' E	414.430.0	M. 9	53° 55' 55" W	
443.174.3	6	91° 56' E	413.455.1	M. 1	53° 55' 55" W
443.174.3	7	56° 23' E	413.455.1	2	53° 55' 55" W
443.174.3	8	38° 08' W	413.455.1	4	53° 55' 55" W
442.149.0	9	53° 55' 55" W	413.455.1	5	53° 55' 55" W
445.192.2	11	93° 51' W	432.146.5	6	53° 55' 55" W
445.192.2	12	51° 17' W	432.146.5	7	53° 55' 55" W
445.192.2	13	51° 17' W	432.146.5	8	53° 55' 55" W
445.192.2	14	51° 17' W	432.146.5	9	53° 55' 55" W
445.192.2	15	51° 17' W	432.146.5	10	53° 55' 55" W
445.192.2	16	51° 17' W	432.146.5	11	53° 55' 55" W
445.192.2	17	51° 17' W	432.146.5	12	53° 55' 55" W
445.192.2	18	51° 17' W	432.146.5	13	53° 55' 55" W
445.192.2	19	51° 17' W	432.146.5	14	53° 55' 55" W
445.192.2	20	51° 17' W	432.146.5	15	53° 55' 55" W
445.192.2	21	51° 17' W	432.146.5	16	53° 55' 55" W
445.192.2	22	51° 17' W	432.146.5	17	53° 55' 55" W
445.192.2	23	51° 17' W	432.146.5	18	53° 55' 55" W
445.192.2	24	51° 17' W	432.146.5	19	53° 55' 55" W
445.192.2	25	51° 17' W	432.146.5	20	53° 55' 55" W
445.192.2	26	51° 17' W	432.146.5	21	53° 55' 55" W
445.192.2	27	51° 17' W	432.146.5	22	53° 55' 55" W
445.192.2	28	51° 17' W	432.146.5	23	53° 55' 55" W
445.192.2	29	51° 17' W	432.146.5	24	53° 55' 55" W
445.192.2	30	51° 17' W	432.146.5	25	53° 55' 55" W
445.192.2	31	51° 17' W	432.146.5	26	53° 55' 55" W
445.192.2	32	51° 17' W	432.146.5	27	53° 55' 55" W
445.192.2	33	51° 17' W	432.146.5	28	53° 55' 55" W
445.192.2	34	51° 17' W	432.146.5	29	53° 55' 55" W
445.192.2	35	51° 17' W	432.146.5	30	53° 55' 55" W
445.192.2	36	51° 17' W	432.146.5	31	53° 55' 55" W
445.192.2	37	51° 17' W	432.146.5	32	53° 55' 55" W
445.192.2	38	51° 17' W	432.146.5	33	53° 55' 55" W
445.192.2	39	51° 17' W	432.146.5	34	53° 55' 55" W
445.192.2	40	51° 17' W	432.146.5	35	53° 55' 55" W
445.192.2	41	51° 17' W	432.146.5	36	53° 55' 55" W
445.192.2	42	51° 17' W	432.146.5	37	53° 55' 55" W
445.192.2	43	51° 17' W	432.146.5	38	53° 55' 55" W
445.192.2	44	51° 17' W	432.146.5	39	53° 55' 55" W
445.192.2	45	51° 17' W	432.146.5	40	53° 55' 55" W
445.192.2	46	51° 17' W	432.146.5	41	53° 55' 55" W
445.192.2	47	51° 17' W	432.146.5	42	53° 55' 55" W
445.192.2	48	51° 17' W	432.146.5	43	53° 55' 55" W
445.192.2	49	51° 17' W	432.146.5	44	53° 55' 55" W
445.192.2	50	51° 17' W	432.146.5	45	53° 55' 55" W
445.192.2	51	51° 17' W	432.146.5	46	53° 55' 55" W
445.192.2	52	51° 17' W	432.146.5	47	53° 55' 55" W
445.192.2	53	51° 17' W	432.146.5	48	53° 55' 55" W
445.192.2	54	51° 17' W	432.146.5	49	53° 55' 55" W
445.192.2	55	51° 17' W	432.146.5	50	53° 55' 55" W
445.192.2	56	51° 17' W	432.146.5	51	53° 55' 55" W
445.192.2	57	51° 17' W	432.146.5	52	53° 55' 55" W
445.192.2	58	51° 17' W	432.146.5	53	53° 55' 55" W
445.192.2	59	51° 17' W	432.146.5	54	53° 55' 55" W
445.192.2	60	51° 17' W	432.146.5	55	53° 55' 55" W
445.192.2	61	51° 17' W	432.146.5	56	53° 55' 55" W
445.192.2	62	51° 17' W	432.146.5	57	53° 55' 55" W
445.192.2	63	51° 17' W	432.146.5	58	53° 55' 55" W
445.192.2	64	51° 17' W	432.146.5	59	53° 55' 55" W
445.192.2	65	51° 17' W	432.146.5	60	53° 55' 55" W
445.192.2	66	51° 17' W	432.146.5	61	53° 55' 55" W
445.192.2	67	51° 17' W	432.146.5	62	53° 55' 55" W
445.192.2	68	51° 17' W	432.146.5	63	53° 55' 55" W
445.192.2	69	51° 17' W	432.146.5	64	53° 55' 55" W
445.192.2	70	51° 17' W	432.146.5	65	53° 55' 55" W
445.192.2	71	51° 17' W	432.146.5	66	53° 55' 55" W
445.192.2	72	51° 17' W	432.146.5	67	53° 55' 55" W
445.192.2	73	51° 17' W	432.146.5	68	53° 55' 55" W
445.192.2	74	51° 17' W	432.146.5	69	53° 55' 55" W
445.192.2	75	51° 17' W	432.146.5	70	53° 55' 55" W
445.192.2	76	51° 17' W	432.146.5	71	53° 55' 55" W
445.192.2	77	51° 17' W	432.146.5	72	53° 55' 55" W
445.192.2	78	51° 17' W	432.146.5	73	53° 55' 55" W
445.192.2	79	51° 17' W	432.146.5	74	53° 55' 55" W
445.192.2	80	51° 17' W	432.146.5	75	53° 55' 55" W
445.192.2	81	51° 17' W	432.146.5	76	53° 55' 55" W
445.192.2	82	51° 17' W	432.146.5	77	53° 55' 55" W
445.192.2	83	51° 17' W	432.146.5	78	53° 55' 55" W
445.192.2	84	51° 17' W	432.146.5	79	53° 55' 55" W
445.192.2	85	51° 17' W	432.146.5	80	53° 55' 55" W
445.192.2	86	51° 17' W	432.146.5	81	53° 55' 55" W
445.192.2	87	51° 17' W	432.146.5	82	53° 55' 55" W
445.192.2	88	51° 17' W	432.146.5	83	53° 55' 55" W
445.192.2	89	51° 17' W	432.146.5	84	53° 55' 55" W
445.192.2	90	51° 17' W	432.146.5	85	53° 55' 55" W
445.192.2	91	51° 17' W	432.146.5	86	53° 55' 55" W
445.192.2	92	51° 17' W	432.146.5	87	53° 55' 55" W
445.192.2	93	51° 17' W	432.146.5	88	53° 55' 55" W
445.192.2	94	51° 17' W	432.146.5	89	53° 55' 55" W
445.192.2	95	51° 17' W	432.146.5	90	53° 55' 55" W
445.192.2	96	51° 17' W	432.146.5	91	53° 55' 55" W
445.192.2	97	51° 17' W	432.146.5	92	53° 55' 55" W
445.192.2	98	51° 17' W	432.146.5	93	53° 55' 55" W
445.192.2	99	51° 17' W	432.146.5	94	53° 55' 55" W
445.192.2	100	51° 17' W	432.146.5	95	53° 55' 55" W

For Change in Grade see C.T.P. 4. M.S. 1910



SECT 6 (35-65)
P-171