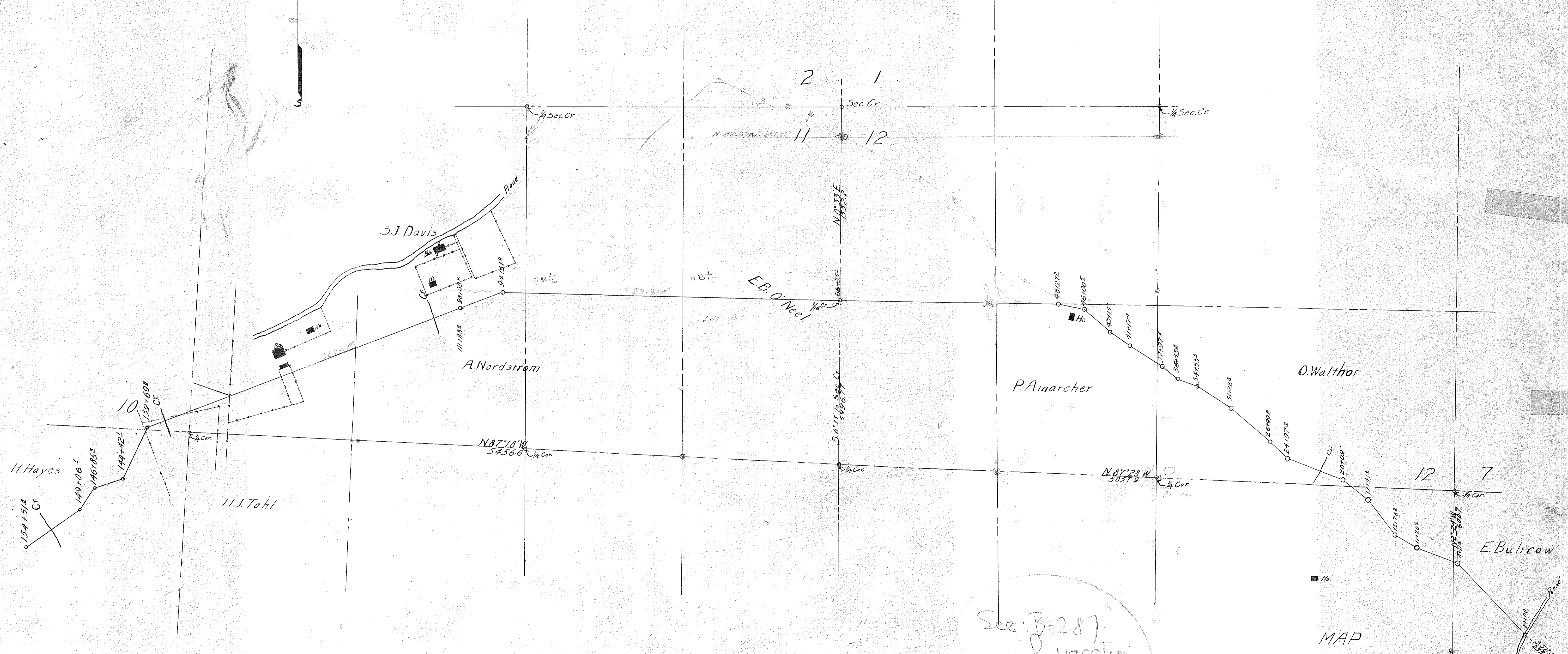
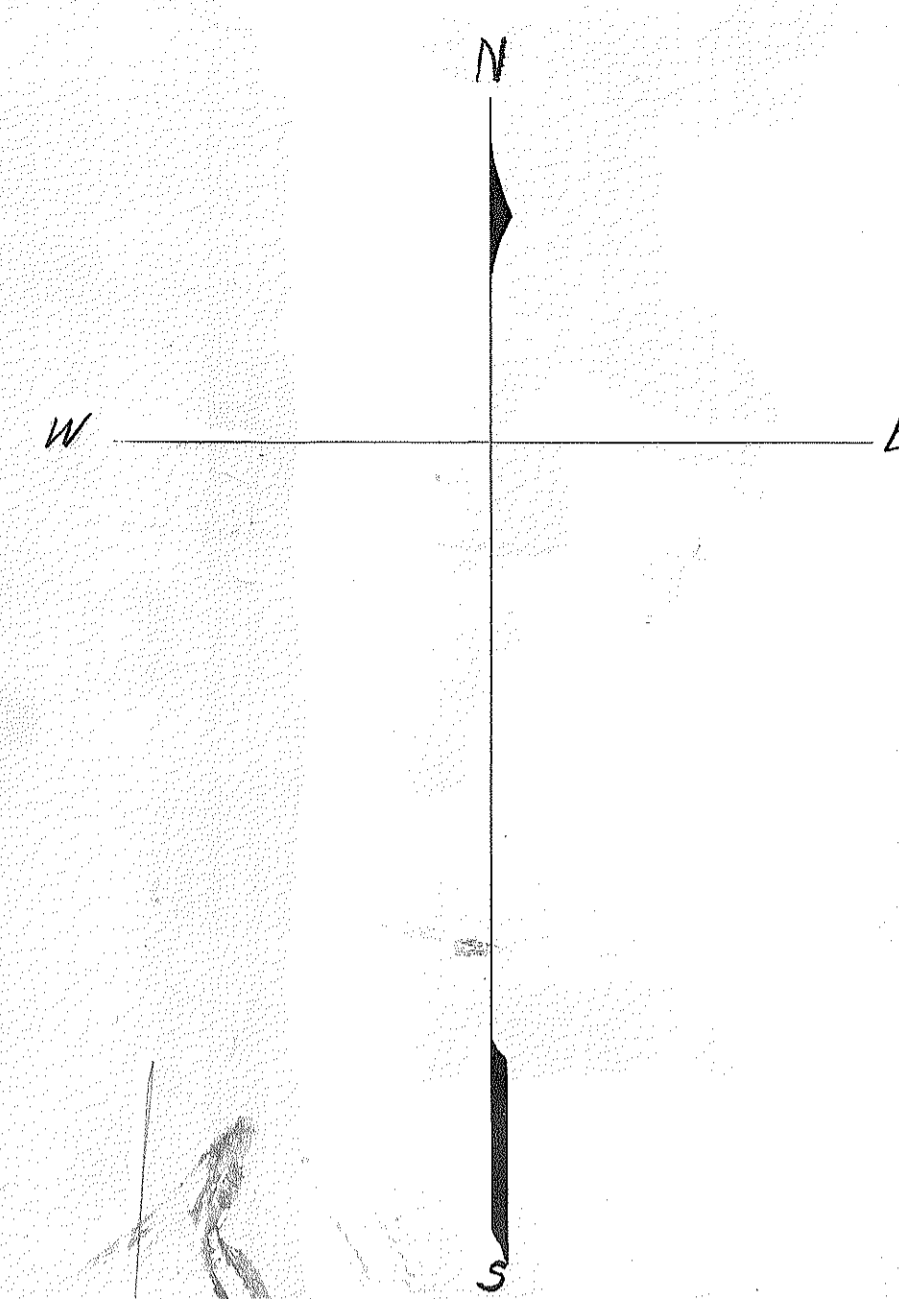


Sta.	Course	Angle
0+00	N43° 19' W	7
8+12	N68° 51' W	1
11+70	N59° 13' W	2
15+78	N36° 23' W	3
17+46	N51° 10' W	4
20+09	N68° 56' W	5
24+97	N45° 52' W	6
26+22	N48° 54' W	7
31+22	N56° 23' W	8
34+55	N69° 24' W	9
36+33	N48° 58' W	10
37+97	N37° 26' W	11
41+17	N54° 01' W	12
43+13	N49° 09' W	13
46+00	N77° 41' W	14
48+27	N88° 43' W	M. 115
66+35	N88° 31' W	1
94+31	S69° 11' W	2
111+82	S69° 11' W	M. 12 Tan.
139+69	S25° 25' W	1
144+42	S71° 40' W	2
146+05	S33° 47' W	3
149+06	S54° 59' W	4
154+31	N77° 45' W	5



See B-287
for location
of portion

See CT-17
P ± 39 etc
for field notes

MAP
of
EUGENE ATKINSON CO. ROAD
from
HEMLOCK TO SANDLAKE
Scale, 1"=400'
July, 1913
Sheet No. 1