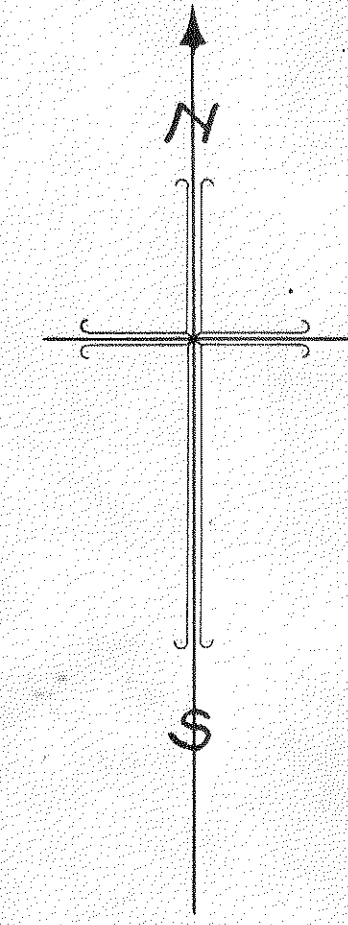
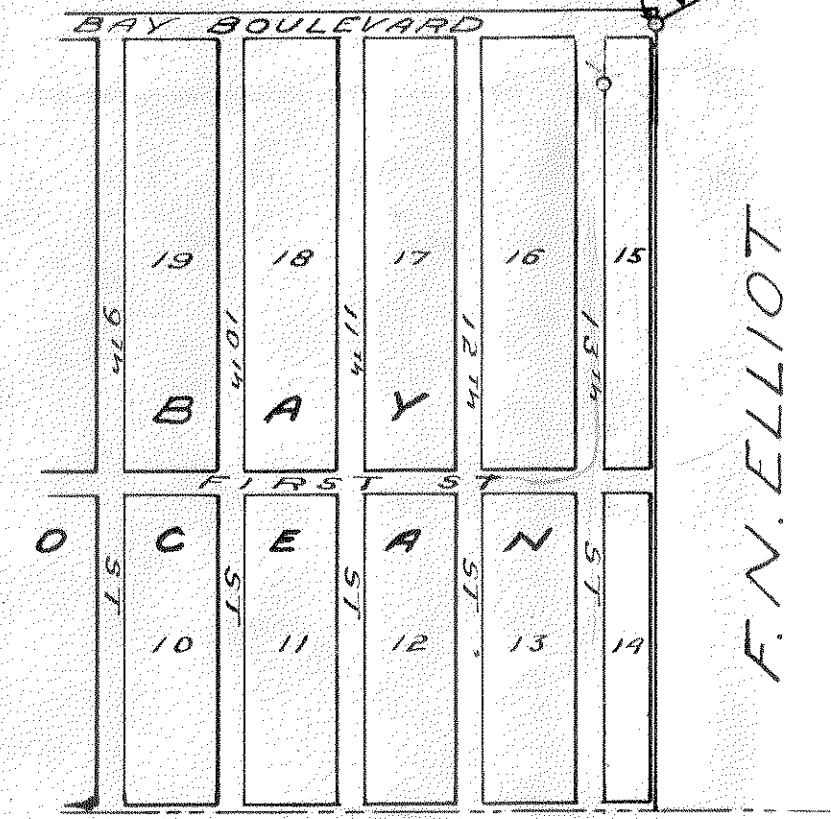
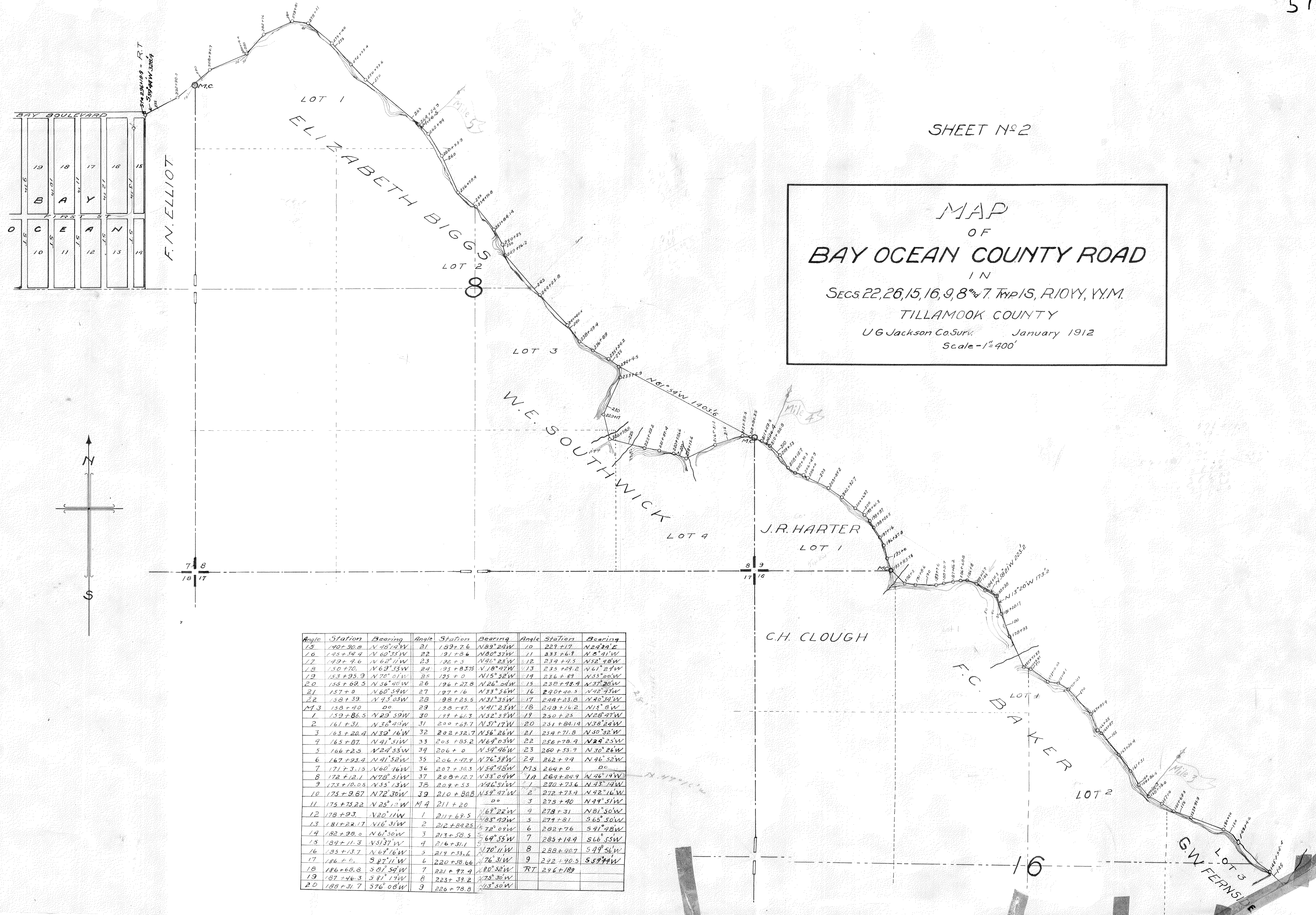


SHEET N^o 2

MAP
OF
BAY OCEAN COUNTY ROAD
IN
SECS. 22, 26, 15, 16, 9, 8th & 7. TWP 15, R. 10 W, Y. M.
TILLAMOOK COUNTY
U G Jackson Co. Surv. January 1912
Scale - 1" = 400'



Angle	Station	Bearing	Angle	Station	Bearing	Angle	Station	Bearing
15	40+30.2	N 70° 4' W	21	189+7.6	N 89° 24' W	10	224+17	N 24° 34' E
16	43+34.4	N 60° 35' W	22	191+8.6	N 80° 37' W	11	233+6.3	N 8° 41' W
17	49+4.6	N 62° 11' W	23	192+5	N 90° 25' W	12	234+4.3	N 52° 48' W
18	50+70	N 63° 33' W	24	193+8.375	N 18° 47' W	13	235+29.2	N 61° 27' W
19	53+35.3	N 70° 01' W	25	195+0	N 15° 32' W	14	236+87	N 53° 00' W
20	55+69.5	N 56° 40' W	26	196+27.8	N 26° 04' W	15	238+74.4	N 37° 30' W
21	57+0	N 60° 54' W	27	197+16	N 33° 56' W	16	240+40.3	N 42° 35' W
22	58+39	N 43° 03' W	28	198+25.6	N 31° 35' W	17	244+23.8	N 40° 34' W
M 3	59+40	00	29	198+47	N 41° 23' W	18	249+16.2	N 13° 8' W
1	59+86.5	N 29° 59' W	30	199+61.3	N 52° 57' W	19	250+25	N 28° 47' W
2	61+31	N 36° 43' W	31	200+67.7	N 51° 17' W	20	251+84.14	N 38° 24' W
3	63+20.4	N 39° 16' W	32	202+32.7	N 56° 26' W	21	254+71.8	N 50° 32' W
4	65+87	N 41° 51' W	33	203+83.2	N 64° 03' W	22	256+78.9	N 24° 25' W
5	66+25	N 24° 53' W	34	206+0	N 54° 46' W	23	260+53.9	N 30° 26' W
6	67+83.4	N 41° 52' W	35	206+47.4	N 76° 58' W	24	262+9.4	N 46° 52' W
7	67+3.19	N 60° 16' W	36	207+30.3	N 54° 48' W	M 3	264+0	00
8	67+12.1	N 78° 51' W	37	208+12.7	N 33° 07' W	11	264+24.4	N 46° 14' W
9	67+18.03	N 55° 13' W	38	209+53	N 46° 51' W	1	270+73.6	N 43° 14' W
10	67+9.87	N 72° 30' W	39	210+80.8	N 54° 47' W	2	272+73.4	N 42° 16' W
11	67+73.22	N 25° 12' W	M 4	211+20	00	3	275+40	N 44° 51' W
12	68+93	N 20° 11' W	1	211+69.5	N 69° 22' W	4	278+31	N 81° 50' W
13	68+22.17	N 16° 31' W	2	212+84.25	N 83° 43' W	5	279+81	N 65° 50' W
14	68+28.0	N 61° 50' W	3	213+58.5	N 78° 01' W	6	282+76	N 91° 48' W
15	68+11.3	N 51° 37' W	4	216+31.1	N 64° 55' W	7	285+14.4	N 66° 55' W
16	68+13.7	N 64° 16' W	5	219+33.6	N 70° 11' W	8	288+92.7	N 49° 56' W
17	68+0	N 87° 11' W	6	220+38.66	N 76° 31' W	9	292+90.5	N 59° 44' W
18	68+68.8	N 81° 54' W	7	221+27.4	N 80° 52' W	RT	296+189	00
19	67+46.3	N 81° 19' W	8	223+39.2	N 75° 30' W			
20	68+31.7	N 76° 08' W	9	226+78.8	N 43° 30' W			

69

57