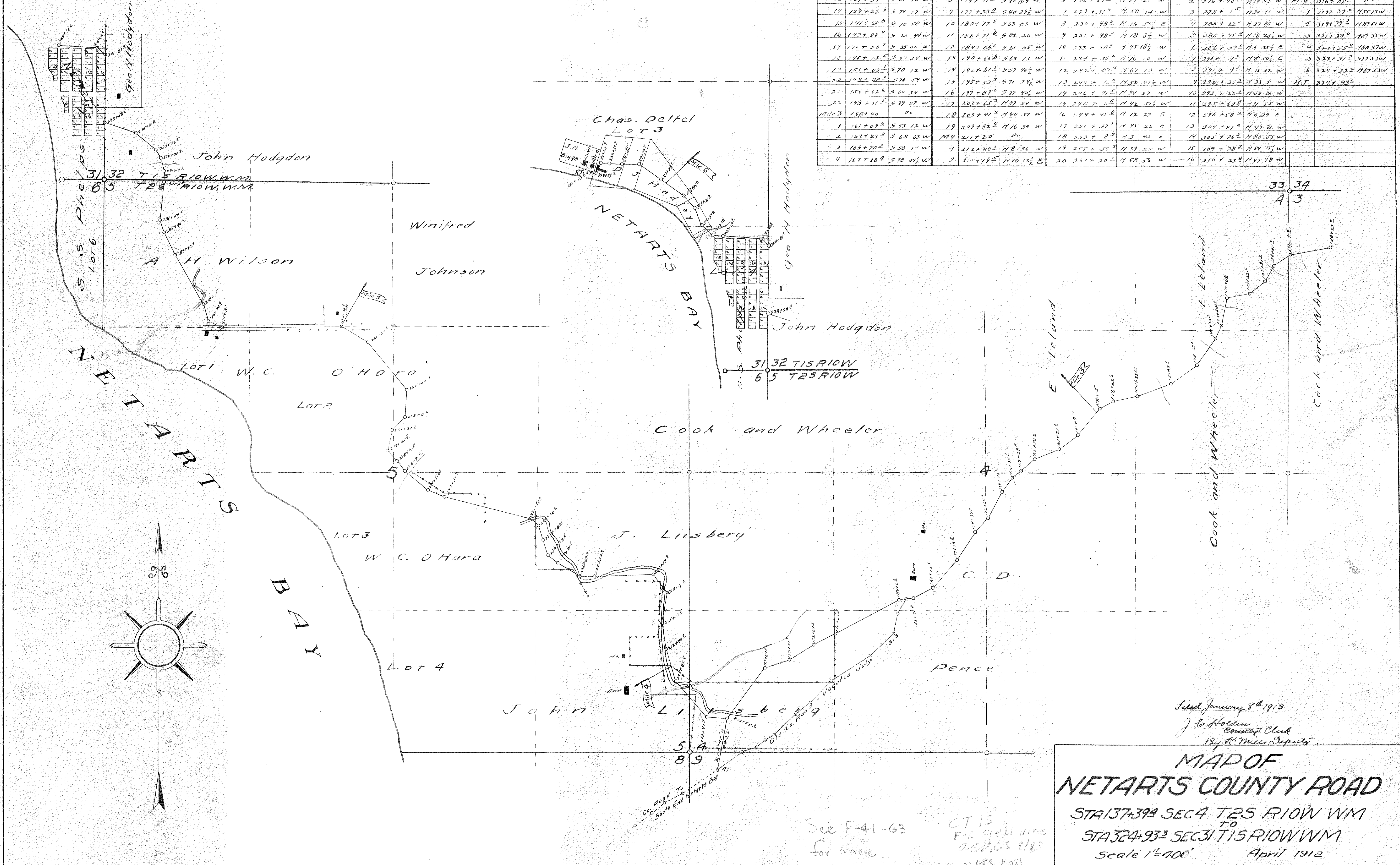


Angle	Station	COURSE	Angle	Station	COURSE	Angle	Station	COURSE	Angle	Station	COURSE	Angle	Station	COURSE
10	130+27.0	S 80.03 W	5	168+34.2	S 35.14 W	3	218+07.2	N 36.26 W	21	263+98.2	S 89.46 1/2 W	17	311+57.2	N 21.42 1/2 W
11	134+04.2	S 53.01 W	6	169+90.2	S 28.51 W	4	220+132	S 88.38 W	M 5	264+00	P.O.	18	313+31.5	N 42.11 W
12	135+81.2	S 29.07 W	7	172+64.0	S 43.28 1/2 W	5	225+57.0	N 87.34 W	1	275+8.2	N 66.25 W	19	314+79.2	N 54.32 1/2 W
13	137+39.4	S 51.46 W	8	174+37.0	S 32.09 W	6	226+89.4	N 59.21 W	2	276+40.8	N 18.03 W	M 6	316+80.0	P.O.
14	139+22.6	S 79.17 W	9	177+38.8	S 40.25 1/2 W	7	229+31.4	N 50.14 W	3	278+1.5	N 30.11 W	1	317+32.0	N 55.13 W
15	141+28.8	S 10.58 W	10	180+72.5	S 63.05 W	8	230+48.5	N 16.54 1/2 E	4	283+22.0	N 27.80 W	2	319+79.2	N 89.51 W
16	143+88.4	S 26.54 W	11	182+71.8	S 82.26 W	9	231+98.0	N 18.0 1/2 W	5	285+45.4	N 18.28 1/2 W	3	321+39.0	N 87.35 W
17	145+20.5	S 35.00 W	12	184+06.6	S 61.65 W	10	233+38.0	N 45.18 1/2 W	6	286+59.6	N 5.35 1/2 E	4	322+55.4	N 88.37 W
18	148+15.5	S 54.34 W	13	190+65.8	S 63.13 W	11	234+35.6	N 76.10 W	7	290+7.0	N 6.50 1/2 E	5	323+31.2	S 17.53 W
19	151+03.1	S 70.12 W	14	192+87.5	S 57.46 1/2 W	12	242+07.4	N 67.13 W	8	291+9.5	N 15.32 W	6	324+32.2	N 87.53 W
20	154+32.5	S 76.57 W	15	195+53.3	S 71.24 1/2 W	13	244+16.0	N 58.47 1/2 W	9	292+35.5	N 33.8 W	P.T.	324+93.2	
21	156+62.0	S 60.34 W	16	197+09.0	S 37.40 1/2 W	14	246+9.5	N 34.37 W	10	293+22.5	N 50.06 W			
22	158+01.5	S 39.27 W	17	203+65.3	N 87.34 W	15	248+6.8	N 42.57 1/2 W	11	295+68.8	N 71.55 W			
M 10 3	158+90	P.O.	18	205+47.4	N 40.37 W	16	249+45.8	N 12.27 E	12	298+58.8	N 0.29 E			
1	161+09.4	S 53.12 W	19	209+82.4	N 16.34 W	17	251+37.2	N 40.26 E	13	304+81.0	N 42.36 W			
2	163+23.0	S 68.03 W	M 4	211+20	P.O.	18	253+8.4	N 3.45 E	14	305+76.5	N 85.55 W			
3	165+70.5	S 50.17 W	1	212+80.3	N 8.36 W	19	255+54.3	N 39.25 W	15	309+28.2	N 84.45 1/2 W			
4	167+28.8	S 98.51 1/2 W	2	215+19.5	N 10.12 1/2 E	20	261+30.2	N 58.56 W	16	310+23.8	N 47.48 W			



Filed January 8th 1913
 J. L. Holden
 County Clerk
 By K. M. DePue
MAP OF
NETARTS COUNTY ROAD
 STA 137+39.9 SEC 4 T2S R10W WM
 TO
 STA 324+93.3 SEC 31 T1S R10W WM
 Scale 1"=400' April 1912
 U.G. Jackson, Co. Surveyor

See F-41-63
 for more
 W. L. C. S.
 CT 15
 For field notes
 see pages 8/183
 pages 4/131