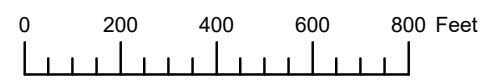
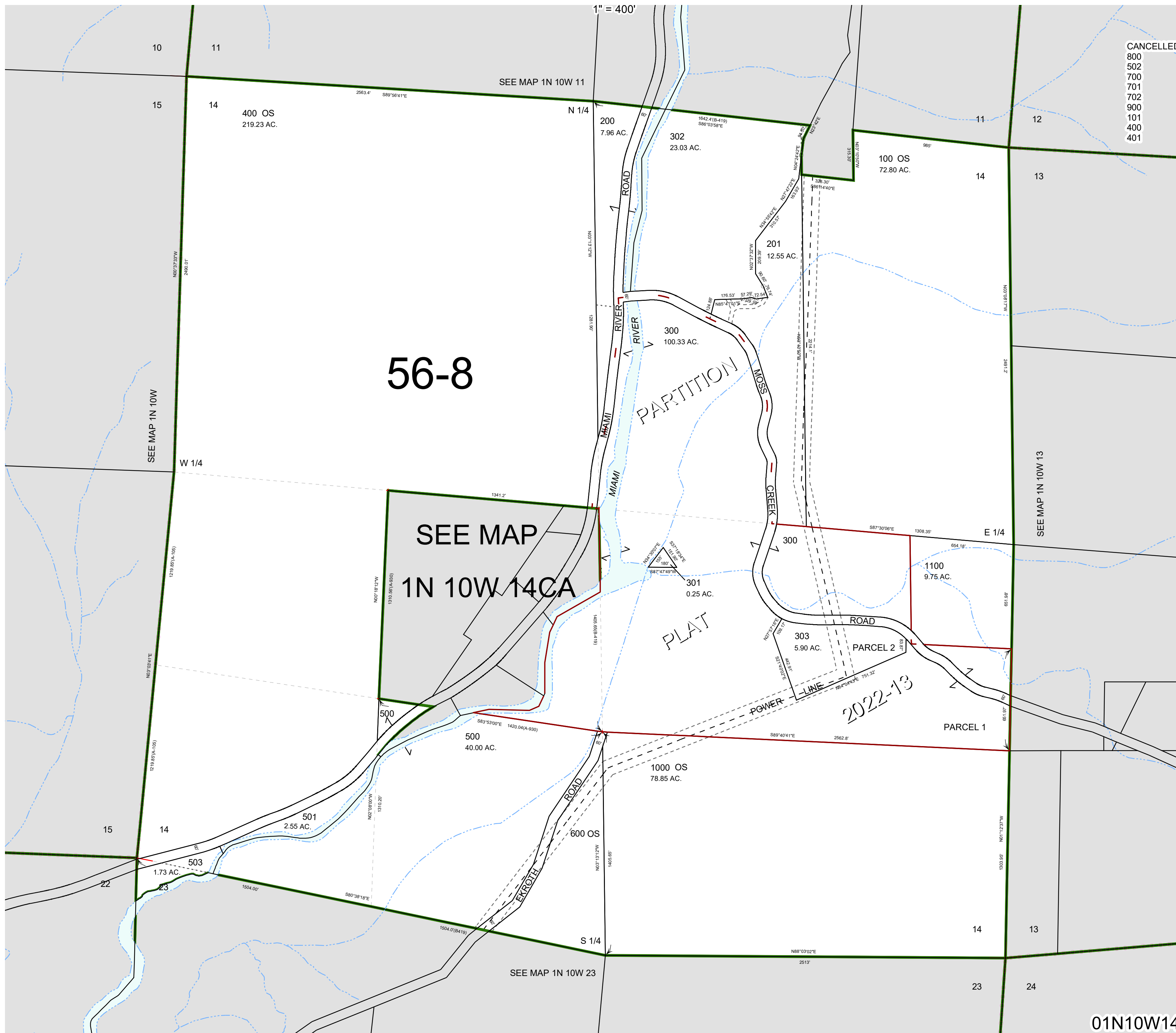


THIS MAP WAS PREPARED FOR ASSESSMENT PURPOSE ONLY



SECTION 14 T.1N. R.10W. W.M.  
TILLAMOOK COUNTY

01N10W14



CANCELLED  
800  
502  
700  
701  
702  
900  
101  
400  
401

56-8

SEE MAP  
1N 10W 14CA

2022-13

01N10W14

Revised 8/12/22, WS