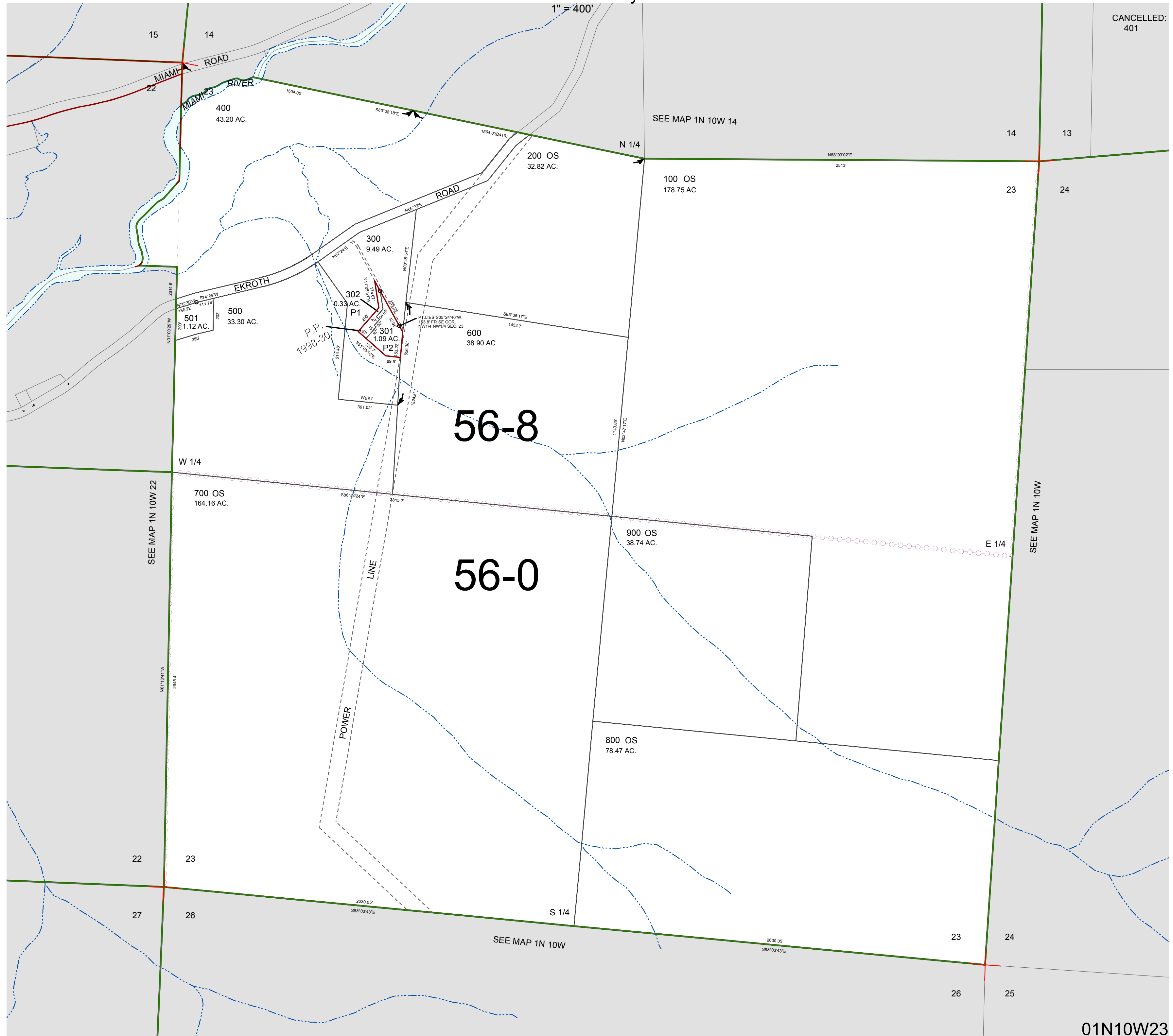


FOR ASSESSMENT AND TAXATION ONLY. NOT SUITABLE FOR LEGAL, ENGINEERING, OR SURVEY PURPOSES

SECTION 23 T.1N. R.10W. W.M.
Tillamook County

01N10W23

CANCELLED:
401



01N10W23
REVISED 9/17/15, WS