

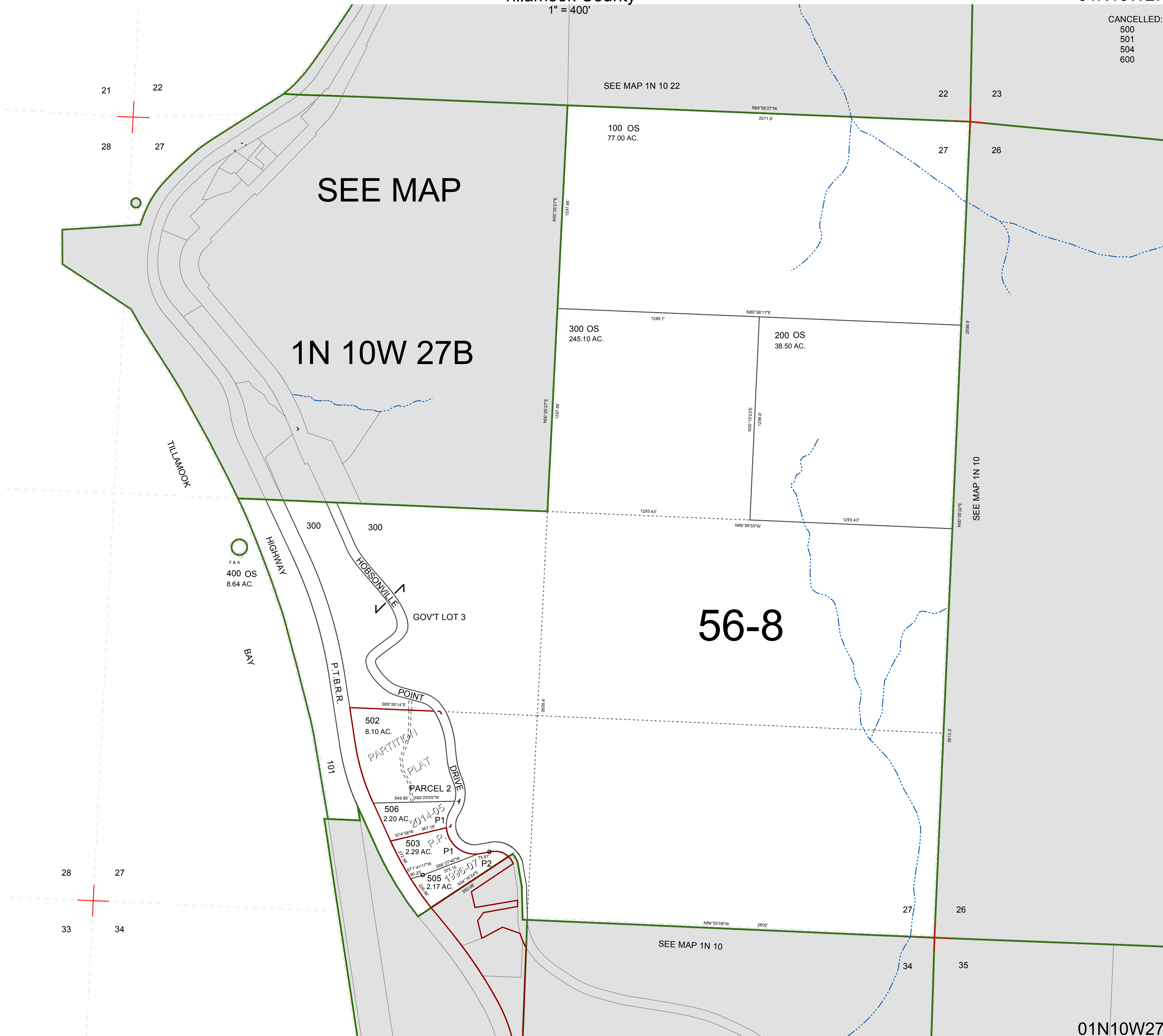
FOR ASSESSMENT AND TAXATION ONLY. NOT SUITABLE FOR LEGAL, ENGINEERING, OR SURVEY PURPOSES

SECTION 27 T.1N. R.10W. W.M.
Tillamook County

1" = 400'

01N10W27

CANCELLED:
500
501
504
600



01N10W27
REVISED 7/24/14, WS