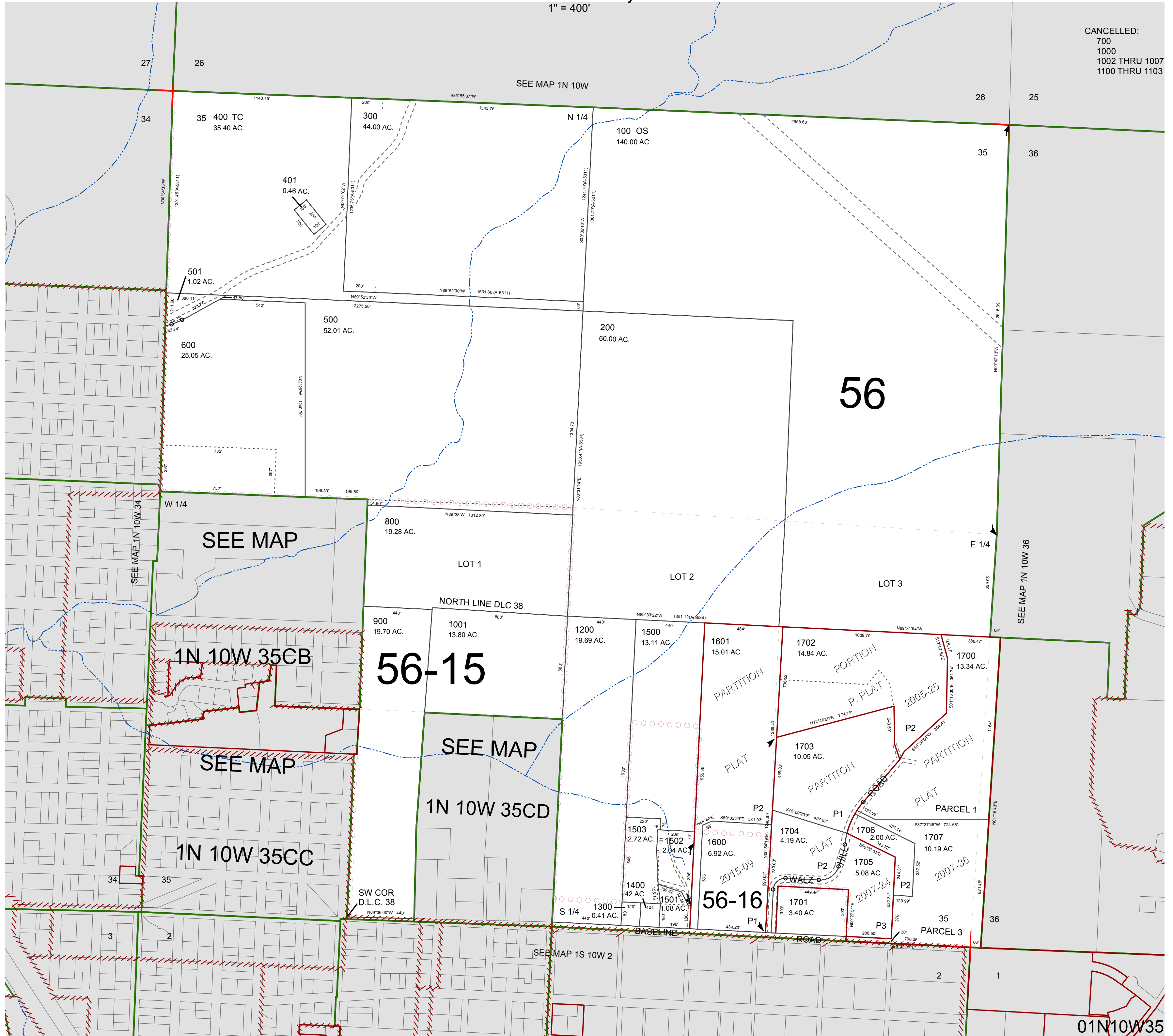


FOR ASSESSMENT AND TAXATION ONLY, NOT SUITABLE FOR LEGAL, ENGINEERING, OR SURVEY PURPOSES

SECTION 35 T.1N. R.10W. W.M.  
Tillamook County  
1" = 400'

01N10W35

CANCELLED:  
700  
1000  
1002 THRU 1007  
1100 THRU 1103



01N10W35  
REVISED 7/10/15, WS