

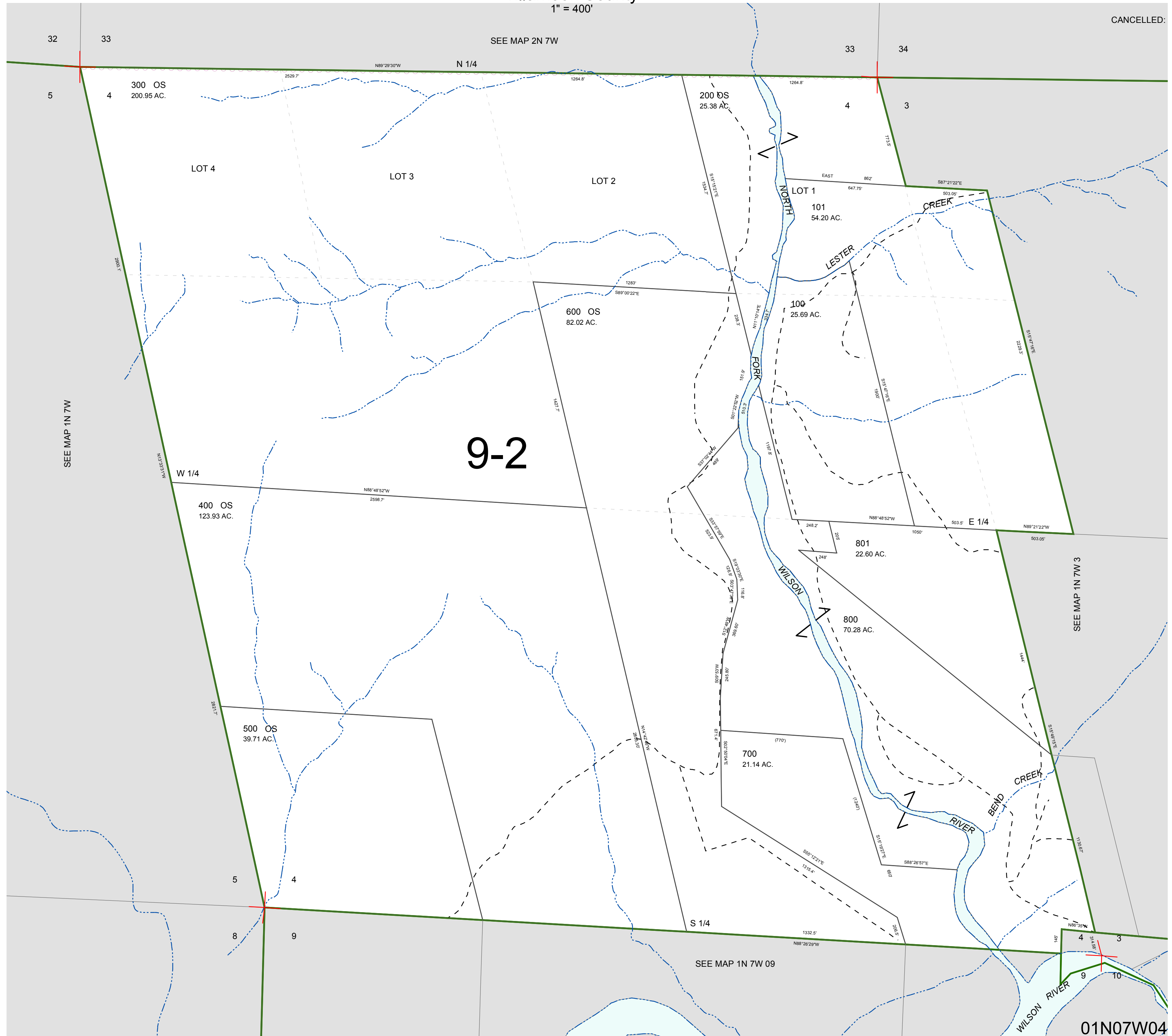
FOR ASSESSMENT AND TAXATION ONLY, NOT SUITABLE FOR
LEGAL, ENGINEERING, OR SURVEY PURPOSES

SECTION 4 T.1N. R.7W. W.M.
Tillamook County

1" = 400'

01N07W04

CANCELLED:



01N07W04
REVISED 2/18/16, WS