

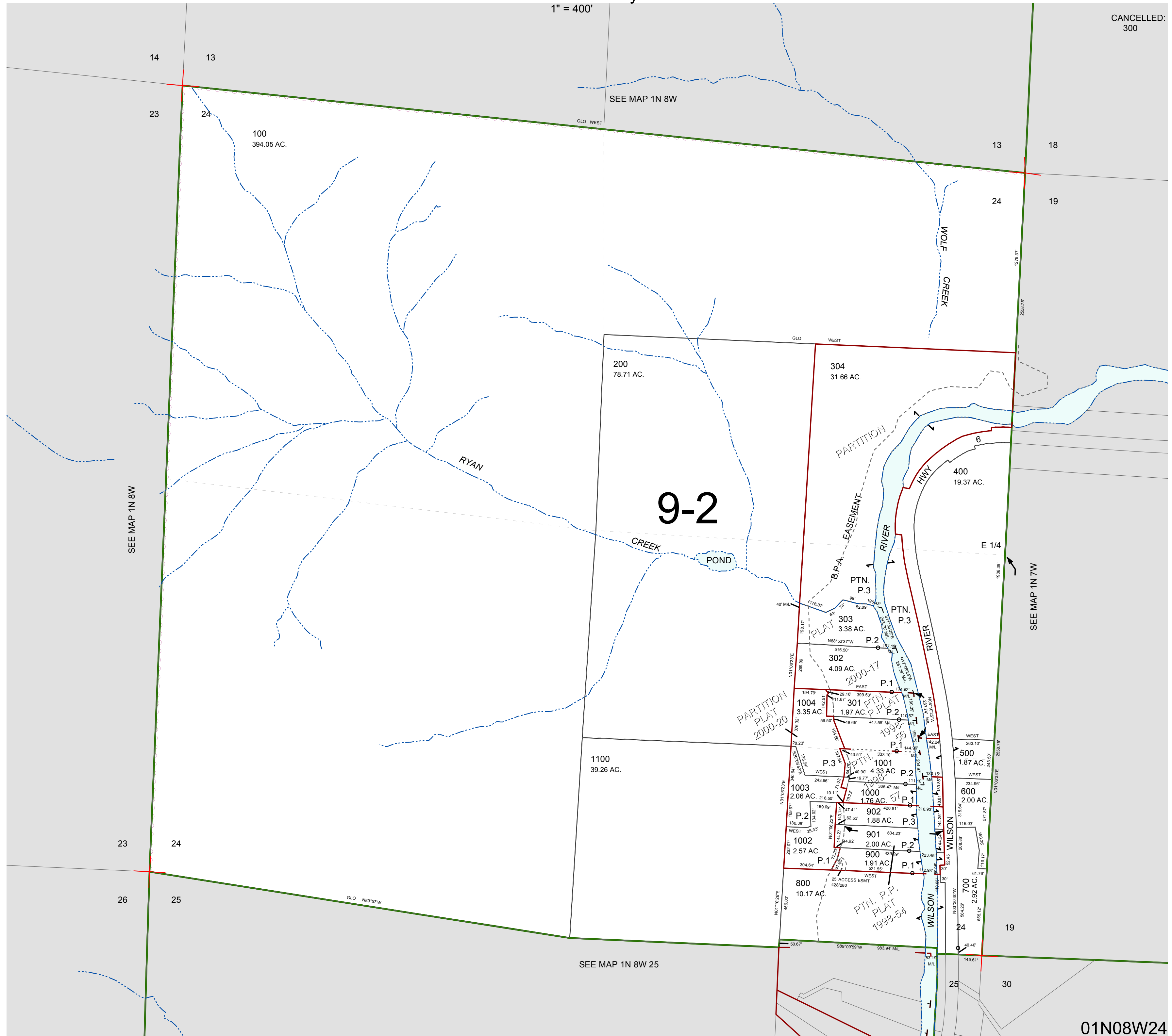
FOR ASSESSMENT AND TAXATION ONLY, NOT SUITABLE FOR LEGAL, ENGINEERING, OR SURVEY PURPOSES

SECTION 24 T.1N. R.8W. W.M.
Tillamook County

1" = 400'

01N08W24

CANCELLED:
300



01N08W24
REVISED 2/17/17, WS