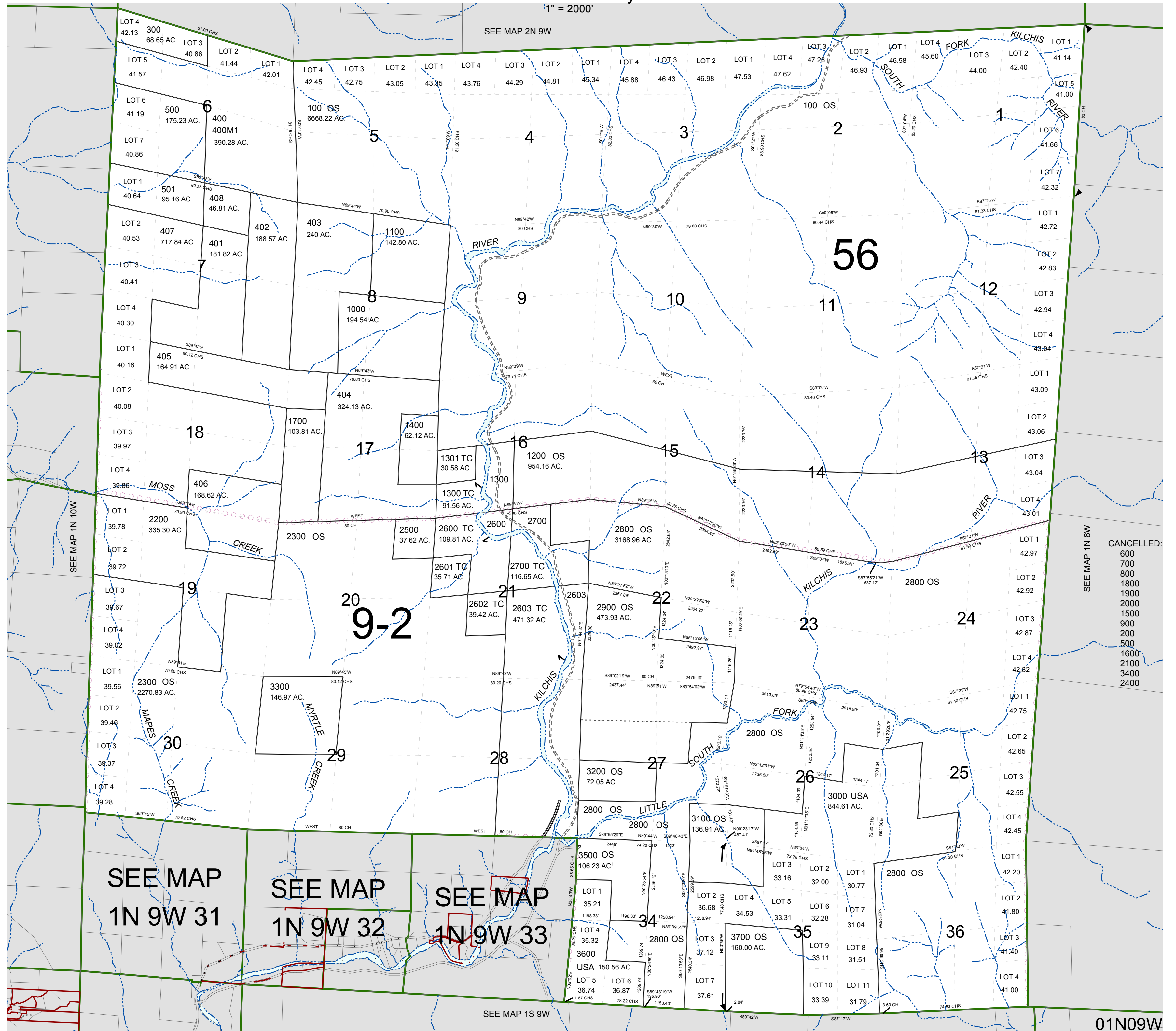


FOR ASSESSMENT AND TAXATION ONLY, NOT SUITABLE FOR LEGAL, ENGINEERING, OR SURVEY PURPOSES

T.1N. R.9W. W.M.
Tillamook County

1" = 2000'

01N09W



- CANCELLED:
- 600
 - 700
 - 800
 - 1800
 - 1900
 - 2000
 - 900
 - 200
 - 500
 - 1600
 - 2100
 - 3400
 - 2400

01N09W
REVISED 8/29/17, WS