

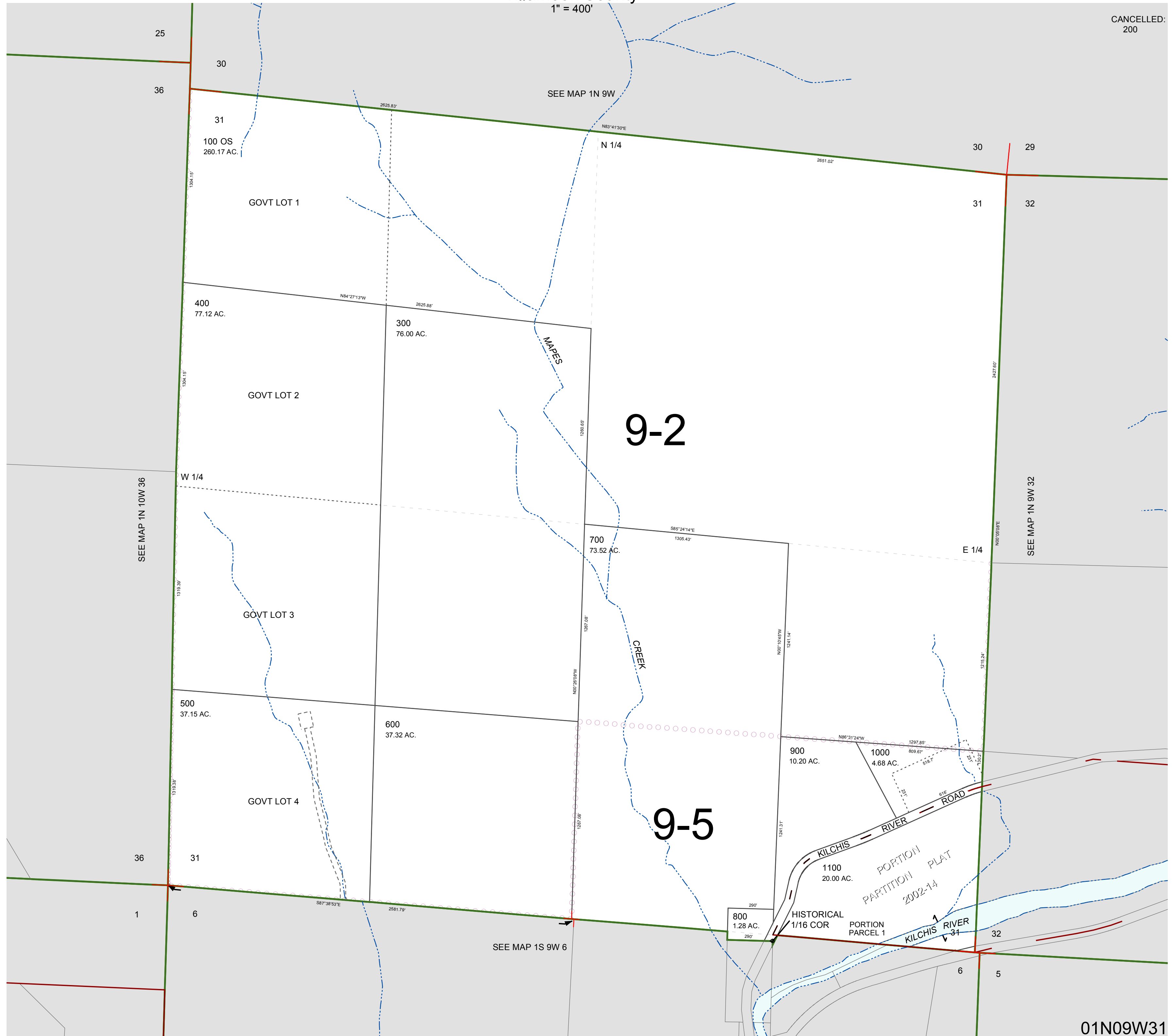
FOR ASSESSMENT AND TAXATION ONLY, NOT SUITABLE FOR LEGAL, ENGINEERING, OR SURVEY PURPOSES

SECTION 31 T.1N. R.9W. W.M.
Tillamook County

1" = 400'

01N09W31

CANCELLED:
200



9-2

9-5

01N09W31
REVISED 2/18/16, WS